

CAMOZZI PNEUMATIC PRODUCTS



359

**CAMOZZI
Pressure
Regulators**



366

**CAMOZZI
Lockable Isolation
Valves**



361

**CAMOZZI
Filters**

New
Additions



367

**CAMOZZI
Pressure
Equipment**



362

**CAMOZZI
Lubricators**



368

**CAMOZZI
FRL Assemblies
& Accessories**



363

**CAMOZZI
Filter / Regulators**



370

**CAMOZZI
Cylinders &
Accessories**



364

**CAMOZZI
Filter / Regulator
& Lubricator
Assemblies**

New
Additions



377

**CAMOZZI
Magnetic Proximity
Switches
& Brackets**



365

**CAMOZZI
FR & FRL
Assemblies with
Isolation Valves**



378

**CAMOZZI
Solenoid Valves
& Accessories**

SEVEN

CAMOZZI PNEUMATIC PRODUCTS



384

**CAMOZZI
Solenoid DIN
Connectors**



397

**CAMOZZI
BSP Adaptors**



386

**CAMOZZI
Pneumatic Valves**



401

**CAMOZZI
Flow Control
Valves**



387

**CAMOZZI
Mechanically
Operated Valves**



402

**CAMOZZI
BSP Super-Rapid
Push-In Fittings**



389

**CAMOZZI
Manually
Operated Valves
& Accessories**



406

**CAMOZZI
Micro Super-Rapid
Fittings**



392

**CAMOZZI
Automatic Valves**



407

**CAMOZZI
Rapid Fittings**



394

**CAMOZZI
Quick Release
Pneumatic Fittings**



409

**CAMOZZI
Super-Rapid &
Rapid Banjo Bolts**



395

**CAMOZZI
BSP Sprint Fittings**



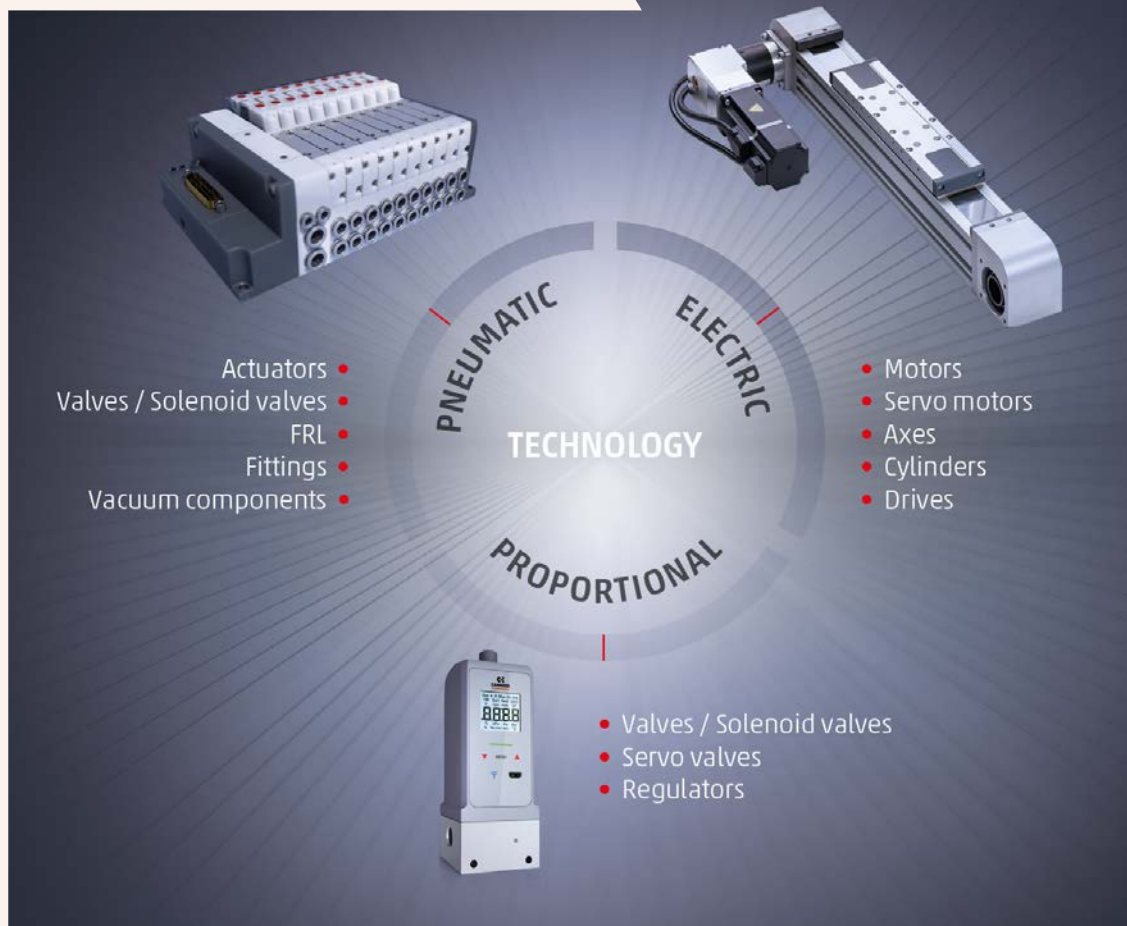
412

**CAMOZZI
C-Truck Air Brake
Fittings**

SEVEN

YOUR BEST CHOICE FOR MULTI-TECHNOLOGY SOLUTIONS

Seven



RELIABILITY AND INCREASED PRODUCTION EFFICIENCY

Camozzi's multi-technological approach makes it possible to offer an optimal solution for every application by choosing from the best pneumatic, electric and proportional technologies available.

This process requires a depth of expertise that not only addresses both the characteristics of technologies and products, but also considers the functional requirements of the end application.



INDUSTRIAL AUTOMATION



LIFE SCIENCE



TRANSPORTATION

MC SERIES

DESCRIPTION

The standard regulator has a relieving diaphragm.

SPECIFICATIONS

Construction	Modular, compact, diaphragm type
Materials	Zama, brass, NBR, technopolymer
Mounting	In-line wall or console mounting (in any position)
Operating temperature	0°C to 50°C
Finishing	Enamelled
Inlet pressure	0 to 16 bar
Outlet pressure	0.5 to 10 bar or 0 to 4 bar



SERIES MC
SELF RELIEVING

2505

PART NUMBER	PORT	PRESSURE	PRICE
ZMC104-R00	1/4"	0.5 to 10 bar	£40.05
ZMC104-R10	1/4"	0 to 4 bar	£40.05

MD SERIES

DESCRIPTION

Manifold, with bypass valve, calibrated, locked.

SPECIFICATIONS

Construction	Modular, compact with pre-formed diaphragm
Materials	Polyamide, brass, zinc plated steel, NBR, stainless steel
Mounting	In-line; wall mounting; panel mounting
Operating temperature	-5°C to +50 °C up to 16 bar
Inlet pressure	0 to 16 bar
Outlet pressure	0.5 to 10 bar



SERIES MD
SELF RELIEVING

2505

PART NUMBER	PORT	PRESSURE	PRICE
ZMD1-R000-1/8	1/8"	0.5 to 10 bar	£35.50
ZMD1-R000-1/4	1/4"	0.5 to 10 bar	£35.50
ZMD1-R000-3/8	3/8"	0.5 to 10 bar	£35.50

NON RELIEVING

ZMD1-R010-3/8	3/8"	0.5 to 10 bar	£35.50
ZMD1-R010-1/4	1/4"	0.5 to 10 bar	£35.50

MX SERIES

DESCRIPTION

Modular – available with built-in pressure gauges or ports for gauges. Tamperproof system (lockable regulator). Manifold version also available.

SPECIFICATIONS

Construction	Modular, compact diaphragm type
Mounting	Vertical in-line or wall mounting (by clamps) or panel mounting
Operating temperature	-5°C to +60°C at 10 bar
Inlet pressure	0 to 16 bar
Outlet pressure	0.5 to 10 bar (standard) 0 to 4 bar 0.5 to 7 bar (MX2 only)
Overpressure exhaust	With relieving (standard)
Fluid	Compressed air
Pressure gauge	Built-in pressure gauge (standard) G 1/4" ports for pressure gauge (MX3 only) G 1/8" ports for pressure gauge (MX2 only)

MATERIALS

Body	Aluminium with polyacetal covering
Valve holder plug	Polyacetal
Regulator knob	Polyamide
Upper spring	Zinc plated steel
Lower spring	Stainless steel
Seals and diaphragm	NBR



SERIES MX – 0.5 to 10 bar
SELF RELIEVING

2505

PART NUMBER	SIZE	PORT	DESCRIPTION	PRICE
ZMX2-3/8-R004	MX2	3/8"	With gauge	£77.81
ZMX2-1/2-R004	MX2	1/2"	With gauge	£77.81
ZMX2-3/4-R004	MX2	3/4"	With gauge	£77.81
ZMX3-3/4-R004	MX3	3/4"	With gauge	£125.28
ZMX3-1-R004	MX3	1"	With gauge	£125.28

M SERIES

DESCRIPTION

The standard regulator has a relieving diaphragm.

SPECIFICATIONS

Construction	Diaphragm type
Materials	Brass, NBR, technopolymer
Mounting	In-line or panel mounting (in any position)
Operating temperature	0°C to 50°C
Inlet pressure	0 to 16 bar
Outlet pressure	0.5 to 10 bar



SERIES M (MICRO)
NON RELIEVING

2505

PART NUMBER	PORT	PRESSURE	PRICE
ZM008-R01	1/8"	0.5 to 10 bar	£26.52
ZM004-R01	1/4"	0.5 to 10 bar	£26.52

T SERIES

DESCRIPTION

A self relieving piston has been incorporated into the design to allow decreasing adjustments. All models are equipped with a valve, enabling fast venting (VS), which is useful when a regulator should be inserted between the valve and cylinder (or capacity) without any negative influence on the exhaust.

SPECIFICATIONS

Construction	Piston regulator
Materials	Brass, NBR, technopolymer
Operating temperature	-5°C to +50°C
Pressure gauge ports	G1/8
Inlet pressure	0 to 12 bar
Outlet pressure	0.5 to 10 bar
Secondary pressure relieving	Standard
Fluid type	Air and water



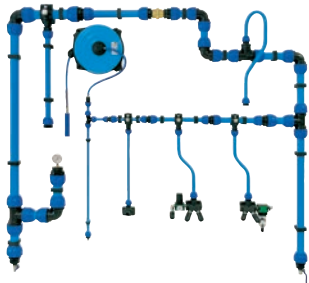
SERIES T (MICRO)
NON RELIEVING

2505

PART NUMBER	PORT	PRESSURE	PRICE
ZT108-R01	1/8"	0.5 to 10 bar	£24.22
ZT108-R11	1/8"	0 to 4 bar	£24.22
ZT108-R21	1/8"	0 to 2 bar	£24.22
ZT108-R71	1/8"	0 to 7 bar	£22.55

You may also need ...

Sicomat ringmain systems



... see pages 838 – 854, section 16

MC SERIES

DESCRIPTION

The metal bowls of these filters come complete with a transparent sight glass and have a condensate drain valve.

SPECIFICATIONS

Construction	Modular, compact with filtering element in HDPE
Materials	Zama, NBR, technopolymer
Mounting	Vertical in-line or wall mounting
Operating temperature	0°C to 50°C at 10 bar
Porosity of filtering element	25 µm standard – 5 µm upon request
Draining of condensate	Manual – semi-automatic standard
Finishing	Enamelled
Operating pressure	Standard drain 0.3 to 16 bar Protected depressurisation 0.3 to 16 bar Depressurisation 0.3 to 10 bar Automatic drain 1.5 to 15 bar for G3/8 & G1/2



SERIES MC
25 MICRON

2505

PART NUMBER	PORT	DRAIN TYPE	PRICE
ZMC104-F00	1/4"	Semi-automatic	£33.53
ZMC104-F04	1/4"	Depressurisation	£36.82

MD SERIES

DESCRIPTION

Bowl with technopolymer cover and bayonet-type mounting.

SPECIFICATIONS

Construction	Modular, compact with filtering element in HDPE
Mounting	Vertical in-line or wall mounting (by clamps)
Operating temperature	-5°C to +50°C up to 16 bar
Porosity of filtering element	25 micron filtering element
Draining of condensate	Semi-automatic manual, automatic protected depressurisation
Fluid	Compressed air
Operating pressure	0.3 to 16 bar

MATERIALS

Body	Polyamide
Tank	Polycarbonate
Valve guide	Polyamide
Filtering element	Polyethylene
Separation deflector	Polyacetal
Seal	NBR



SERIES MD
WITH INDICATOR

2505

PART NUMBER	PORT	DRAIN TYPE	PRICE
ZMD1-F001-1/8	1/8"	Semi-automatic	£49.89
ZMD1-F001-1/4	1/4"	Semi-automatic	£49.89
ZMD1-F001-3/8	3/8"	Semi-automatic	£49.89

MX SERIES

DESCRIPTION

Bowl with technopolymer cover and bayonet-type mounting.

SPECIFICATIONS

Construction	Modular, compact with filtering element in HDPE
Mounting	Vertical in-line or wall mounting (by clamps)
Operating temperature	-5°C to +60°C at 10 bar
Porosity of filtering element	25 µm standard – 5 µm upon request
Draining of condensate	Manual – semi-automatic standard MX2: automatic depressurisation
Condensate capacity	MX2: 55cc MX3: 85cc
Fluid	Compressed air
Operating pressure	Standard drain 0.3 to 16 bar

MATERIALS

Body	Aluminium with polyacetal covering
Bowl (technopolymer cover)	Polycarbonate / polyamide
Valve guide	Polyacetal
Filtering element	Polyethylene
Separation deflector	Polyacetal
Seals	NBR



SERIES MX
25 MICRON

2505

PART NUMBER	SIZE	PORT	DRAIN TYPE	PRICE
ZMX2-3/8-F00	MX2	3/8"	Semi-automatic	£45.18
ZMX2-1/2-F00	MX2	1/2"	Semi-automatic	£45.18
ZMX2-3/4-F00	MX2	3/4"	Semi-automatic	£45.18
ZMX3-3/4-F00	MX3	3/4"	Semi-automatic	£81.61
ZMX3-1-F00	MX3	1"	Semi-automatic	£81.61

MC SERIES

DESCRIPTION

With metal bowl and bayonet-type mounting. Bowls are also equipped with a transparent viewer. The oil flow can be monitored via the small transparent cap and regulated by means of the special adjusting screw.

SPECIFICATIONS

Construction	Modular, compact
Materials	Zama, NBR, technopolymer
Mounting	Vertical in-line or wall mounting
Operating temperature	0°C to 50°C at 10 bar
Oil refilling	Without pressure (G1/4)
Oil for lubrication	Up to ISO VG32
Finishing	Enamelled
Operating pressure	0 to 16 bar



SERIES MC LUBRICATORS

2505

PART NUMBER	CONNECTION	PRICE
ZMC104-L00	1/4"	£45.71

MD SERIES

DESCRIPTION

Modular assembly. Bowl with technopolymer cover and bayonet-type mounting.

SPECIFICATION

Construction	Modular, compact
Materials	Polyamide, polycarbonate, NBR
Mounting	In vertical position by means of through holes in the body
Operating temperature	-5°C to +50°C up to 16 bar
Oil for lubrication	Use ISO VG32 oils. Once applied, the lubrication should never be interrupted
Operating pressure	0 to 16 bar



SERIES MD LUBRICATORS

2505

PART NUMBER	CONNECTION	PRICE
ZMD1-L00-1/8	1/8"	£38.77
ZMD1-L00-1/4	1/4"	£38.77
ZMD1-L00-3/8	3/8"	£38.77

MX SERIES

DESCRIPTION

Bowl with technopolymer cover and bayonet-type mounting. Ability to refill the oil even with system under pressure.

SPECIFICATIONS

Construction	Modular, compact
Mounting	Vertical in-line or wall mounting (by clamps)
Operating temperature	-5°C to +60°C at 10 bar
Oil capacity	MX2: 118cc MX3: 170cc
Oil refilling	Even during use
Oil for lubrication	Up to ISO VG32
Operating pressure	0 to 16 bar

MATERIALS

Body	Aluminium with polyacetal covering
Bowl (technopolymer cover)	Polycarbonate / polyamide
Viewer	Polyamide
Seals and diaphragm	NBR



SERIES MX LUBRICATORS

2505

PART NUMBER	SIZE	CONNECTION	PRICE
ZMX2-3/8-L00	MX2	3/8"	£55.18
ZMX2-1/2-L00	MX2	1/2"	£55.18
ZMX2-3/4-L00	MX2	3/4"	£55.18
ZMX3-3/4-L00	MX3	3/4"	£97.70
ZMX3-1-L00	MX3	1"	£97.70

MC SERIES

DESCRIPTION

Combines the features of the MC filters and regulators but has smaller overall dimensions than the two separate components.

SPECIFICATIONS

Construction	Modular, compact with filtering element in HDPE – diaphragm type
Materials	Zama, NBR, technopolymer
Pressure gauge ports	G1/8
Mounting	Vertical in-line or wall mounting
Operating temperature	0°C to 50°C at 10 bar
Porosity of filtering element	25 µm standard – 5 µm upon request
Draining of condensate	Manual – semi-automatic standard
Finishing	Enamelled
Inlet pressure	Standard drain 0.3 to 16 bar Depressurisation 0.3 to 16 bar Depressurisation 0.3 to 10 bar



2505

SERIES MC 25 MICRON

PART NUMBER	PORT	DRAIN TYPE	PRICE
ZMC104-D00	1/4"	Semi-automatic	£58.92
ZMC104-D04	1/4"	Depressurisation	£64.66

MD SERIES

DESCRIPTION

Modular assembly. Bowl with technopolymer cover and bayonet-type mounting.

SPECIFICATION

Construction	Modular, compact with filtering element in HDPE
Materials	Polyamide, polycarbonate, brass, polyacetal, polyethylene, zinc plated steel, NBR, stainless steel
Pressure gauge ports	G1/8
Mounting	In-line: wall mounting by means of through holes in the body or with a support bracket; panel mounting
Operating temperature	-5°C to +50°C up to 16 bar
Porosity of filtering element	Between 25 µm or 5 µm
Draining of condensate	Semi-automatic manual, automatic protected depressurisation, direct G1/8 exhaust
Fluid	Compressed air



2505

SERIES MD 25 MICRON NON RELIEVING

PART NUMBER	PORT	DRAIN TYPE	PRICE
ZMD1-FR2000-1/8	1/8"	Semi-automatic	£47.98
ZMD1-FR2000-1/4	1/4"	Semi-automatic	£47.98
ZMD1-FR2000-3/8	3/8"	Semi-automatic	£47.98

MX SERIES

DESCRIPTION

Bowl with technopolymer cover and bayonet-type mounting. Lockable knob with closure. Bowl locking system reduces the risk of accidents.

SPECIFICATIONS

Construction	Modular, compact with filtering element in HDPE
Mounting	Vertical in-line, wall mounting (by clamps) or panel mounting
Operating temperature	0°C to 60°C at 10 bar
Porosity of filtering element	25 µm standard – 5 µm upon request
Draining of condensate	Manual: semi-automatic standard MX2: automatic
Condensate capacity	MX2: 55cc MX3: 85cc
Fluid	Compressed air
Operating pressure	Standard drain 0.3 to 16 bar
Pressure gauge	Built-in pressure gauge (standard) G1/4" ports for pressure gauge (MX3 only) G1/8" ports for pressure gauge (MX2 only)

MATERIALS

Body	Aluminium with polyacetal covering
Bowl (technopolymer cover)	Polycarbonate / polyamide
Valve guide	Polyacetal
Filtering element	Polyethylene
Separation deflector	Polyacetal
Knob	Polyamide
Upper spring	Zinc plated steel
Lower spring	Stainless steel
Seals and diaphragm	NBR



2505

SERIES MX 25 MICRON – WITH PRESSURE GAUGE

PART NUMBER	SIZE	PORT	DRAIN TYPE	PRICE
ZMX2-3/8-FR0004	MX2	3/8"	Semi-automatic	£93.15
ZMX2-1/2-FR0004	MX2	1/2"	Semi-automatic	£93.15
ZMX2-3/4-FR0004	MX2	3/4"	Semi-automatic	£93.15
ZMX3-3/4-FR0004	MX3	3/4"	Semi-automatic	£147.96
ZMX3-1-FR0004	MX3	1"	Semi-automatic	£147.96

25 MICRON – WITHOUT PRESSURE GAUGE

PART NUMBER	SIZE	PORT	DRAIN TYPE	PRICE
ZMX2-3/8-FR0000	MX2	3/8"	Semi-automatic	£75.76
ZMX2-1/2-FR0000	MX2	1/2"	Semi-automatic	£75.76
ZMX2-3/4-FR0000	MX2	3/4"	Semi-automatic	£75.76
ZMX3-3/4-FR0000	MX3	3/4"	Semi-automatic	£137.34
ZMX3-1-FR0000	MX3	1"	Semi-automatic	£137.34

MC SERIES

DESCRIPTION

Filter / regulators combine the features of the MC filters and regulators but with smaller overall dimensions than the two separate components. The oil flow of the lubricator can be monitored via the small transparent cap and regulated by means of the special adjusting screw.

SPECIFICATIONS

Construction	Compact modular with filtering element in HDPE – diaphragm type
Materials	Zama, NBR, technopolymer
Mounting	Vertical in-line or wall mounting
Operating temperature	0°C to 50°C at 10 bar
Porosity of filtering element	25 µm standard – 5 µm upon request
Draining of condensate	Manual to semi-automatic standard
Finishing	Enamelled
Oil refilling	Without pressure (G1/4)
Oil for lubrication	Up to ISO VG32
Inlet pressure	Standard drain 0.3 to 16 bar Protected depressurisation 0.3 to 16 bar Depressurisation 0.3 to 10 bar
Lubricator operating pressure	0 to 16 bar



SERIES MC INCLUDES GAUGE & BRACKET

2505

PART NUMBER	CONNECTION	PRICE
ZMC104-C25	1/4"	£128.22

MD SERIES

DESCRIPTION

Offers multi-sector solutions that ensure saving in terms of installation time, space and costs. Easy and quick maintenance. Reduced weight, quick fixing with a wide range of functions and additional air intakes.

SPECIFICATION

Construction	Modular, compact
Ports	Threaded or integrated with super-rapid fitting for tube with diameter 6, 8 and 10 mm
Mounting	Vertical in-line, wall mounting via support bracket, panel mounting
Operating temperature	-5°C to +50°C up to 16 bar



SERIES MD 5 MICRON WITH GAUGE & BRACKET

2505

PART NUMBER	CONNECTION	PRICE
ZMD1-000026-1/8	1/8"	£105.60
ZMD1-000026-1/4	1/4"	£105.60
ZMD1-000026-3/8	3/8"	£105.60

25 MICRON WITH GAUGE & BRACKET

ZMD1-000015-1/8	1/8"	£105.60
ZMD1-000015-1/4	1/4"	£105.60
ZMD1-000015-3/8	3/8"	£105.60

MX SERIES

DESCRIPTION

Filter / regulator and lubricator assembly through rapid clamps. Compact design. Easy and quick maintenance. Reduced weight.

SPECIFICATIONS

Construction	Modular, compact
Mounting	Vertical in-line or wall mounting (by clamps) or panel mounting
Operating temperature	0°C to 60°C at 10 bar

Also available with port for external pressure gauge
Please ask for details



SERIES MX WITH INTEGRATED GAUGE

2505

PART NUMBER	SIZE	PORT	PRICE
ZMX2-3/8-000015	MX2	3/8"	£160.27
ZMX2-1/2-000015	MX2	1/2"	£160.27
ZMX2-3/4-000015	MX2	3/4"	£160.27
ZMX3-3/4-000015	MX3	3/4"	£261.41
ZMX3-1-000015	MX3	1"	£261.41

FILTER / REGULATOR AND ISOLATION VALVE ASSEMBLY

MD SERIES

DESCRIPTION

Offers multi-sector solutions that ensure saving in terms of installation time, space and costs. Quick and easy maintenance. Reduced weight, quick fixing with a wide range of functions and additional air intakes.

SPECIFICATION

Construction	Modular, compact
Ports	Threaded or integrated with super-rapid fitting for tube with diameter 6, 8 and 10 mm
Mounting	Vertical in-line, wall mounting via support bracket, panel mounting
Operating temperature	-5°C to +50°C up to 16 bar



2505

SERIES MD 5 MICRON GAUGE & BRACKET

PART NUMBER	CONNECTION	PRICE
ZMD1-000028-1/8	1/8"	£119.82
ZMD1-000028-1/4	1/4"	£119.82
ZMD1-000028-3/8	3/8"	£119.82

25 MICRON GAUGE & BRACKET

ZMD1-000017-1/8	1/8"	£119.82
ZMD1-000017-1/4	1/4"	£119.82
ZMD1-000017-3/8	3/8"	£119.82

FILTER / REGULATOR, LUBRICATOR AND ISOLATION VALVE ASSEMBLY

MD SERIES

DESCRIPTION

Offers multi-sector solutions that ensure saving in terms of installation time, space and costs. Quick and easy maintenance. Reduced weight, quick fixing with a wide range of functions and additional air intakes.

SPECIFICATION

Construction	Modular, compact
Ports	Threaded or integrated with super-rapid fitting for tube with diameter 6, 8 and 10 mm
Mounting	Vertical in-line, wall mounting via support bracket, panel mounting
Operating temperature	-5°C to +50°C up to 16 bar



2505

SERIES MD 5 MICRON GAUGE & BRACKET

PART NUMBER	CONNECTION	PRICE
ZMD1-000027-1/8	1/8"	£157.88
ZMD1-000027-1/4	1/4"	£157.88
ZMD1-000027-3/8	3/8"	£157.88

25 MICRON GAUGE & BRACKET

ZMD1-000016-1/8	1/8"	£157.79
ZMD1-000016-1/4	1/4"	£157.79
ZMD1-000016-3/8	3/8"	£157.79

You may also need ...

Brass adaptors



... on pages 394 – 413, section 7
pages 652 – 665, section 13
and pages 671 – 685, section 13

MC SERIES

DESCRIPTION

Designed to block the air inlet of the FRL group and to pressurise and depressurise the equipment.

SPECIFICATIONS

Construction	Modular, compact, poppet type
Materials	Zama, NBR, technopolymer
Mounting	In-line, wall or panel mounting (in any position)
Operating temperature	0°C to 50°C
Finishing	Enamelled
Inlet pressure	2 to 10 bar
Nominal exhaust flow	G1/4 1080 NI/min



SERIES MC

2505

PART NUMBER	PORT	PRICE
ZMC104-V01	1/4"	£85.16

Flow determined at 6 bar with $\Delta P = 1$ bar

MD SERIES

DESCRIPTION

Offers multi-sector solutions that ensure saving in terms of installation time, space and costs. Allow the inlet and exhaust of compressed air from the plant and can meet several application requirements. Manual, electro-pneumatic, servo-pilot and pneumatic control.

SPECIFICATION

Construction	Modular, compact, spool type
Mounting	In-line or wall mounting (by brackets)
Operating temperature	-5°C to +50°C up to 16 bar
Operating pressure	-0.8 to 10 bar
Nominal exhaust flow	TBA
Fluid	Compressed air

MATERIALS

Body	Polyamide
Covering	Polyamide
Plug	Polyamide
Spool	Anodised aluminium
End cover	Polyamide
Lower spring	Stainless steel
Seals	NBR



SERIES MD

PNEUMATIC CONTROL

2505

PART NUMBER	PORT	PRICE
ZMD1-V36-1/8	1/8"	£74.85
ZMD1-V36-1/4	1/4"	£74.85
ZMD1-V36-3/8	3/8"	£74.85

MANUAL CONTROL

ZMD1-V01-1/8	1/8"	£51.82
ZMD1-V01-1/4	1/4"	£51.82
ZMD1-V01-3/8	3/8"	£51.82

ELECTRO-PNEUMATIC CONTROL

ZMD1-V16-1/8	1/8"	£84.45
ZMD1-V16-1/4	1/4"	£84.45
ZMD1-V16-3/8	3/8"	£84.45

You may also need ...

Coils



... see page 383, section 7

MX SERIES

DESCRIPTION

Manual isolation valves: ideal to allow an easy access to the FRL group. The system is depressurised with the deactivation of the valve. Standard tamperproof lock-out. One / more locks for the lock-out feature. It exhausts in atmosphere. Silencers available upon request.

SPECIFICATIONS

Construction	Modular, compact spool type
Mounting	Vertical in-line or wall mounting (by clamps)
Operating temperature	-5°C to +60°C at 10 bar
Operating pressure	-0.8 to 10 bar
Nominal exhaust flow	MX2: 6000 NI/min MX3: 9200 NI/min
Fluid	Compressed air

MATERIALS

Body	Aluminium with polyacetal covering
Valve holder plug	Polyacetal
Lower spring	Zinc plated steel
Spool	Aluminium
Seals	NBR



SERIES MX

2505

PART NUMBER	SIZE	PORT	PRICE
ZMX2-3/8-V01	MX2	3/8"	£94.41
ZMX2-1/2-V01	MX2	1/2"	£94.41
ZMX2-3/4-V01	MX2	3/4"	£94.58
ZMX3-3/4-V01	MX3	3/4"	£109.98
ZMX3-1-V01	MX3	1"	£109.98

Flow determined at 6 bar with $\Delta P = 1$ bar

PRECISION REGULATORS

FEATURES

- High precision adjustment
- Multi-diaphragm construction to reach the highest stability
- Adjustment lock
- Compact dimensions
- Removable adjustment knob



2505

SERIES PR SELF RELIEVING

PART NUMBER	PORT	OUTLET PRESSURE	PRICE
ZPR104-M02	1/4"	0.05 to 2 bar	£156.34
ZPR104-M04	1/4"	0.05 to 4 bar	£156.34
ZPR104-M07	1/4"	0.05 to 7 bar	£156.34

PRESSURE SWITCHES

FEATURES

- With hysteresis adjustable, IP40 for air, non-corrosive and non-flammable gas



2505

SERIES GPB5 1/8" PORT

PART NUMBER	PRESSURE RANGE	OUTPUT	PRICE
ZGPB5C2CC02	0 – 1.0 MPa	2 x PNP x 2m	£109.57
ZGPB5C2CM08	0 – 1.0 MPa	2 x PNP x M8	£197.12
ZGPB5C3CC02	0 – 0.1 MPa	1 x PNP, 1 x 1 to 5V x 2m	£132.68
ZGPB5C4CC02	0 – 0.1 MPa	1 x PNP, 1 x 4 to 20 mA x 2m	£132.68
ZGPB5B2CM08	0 – 101.3 KPa	2 x PNP x M8	£59.38

DIGITAL GAUGES

FEATURES

- Pressure display unit
- Easy and fast read out with digital display
- 4 user programmable pressure units available
- Power saving mode
- Back light
- Dust proof and splash proof
- Battery powered digital gauges



2505

SERIES PG BATTERY POWERED

PART NUMBER	TYPE	THREAD SIZE	PRESSURE	PRICE
ZPG010-PB-1/8	Pressure gauge	1/8" BSPP	15 bar	£40.30
ZPG001-VB-1/8	Vacuum gauge	1/8" BSPP	3 bar	£40.30
ZPG010-PB-1/4	Pressure gauge	1/4" BSPP	15 bar	£40.30
ZPG001-VB-1/4	Vacuum gauge	1/4" BSPP	3 bar	£40.30

FEATURES

- Pressure display unit
- Easy and fast read out with digital display
- 4 user programmable pressure units available
- Power saving mode
- Back light
- Dust proof and splash proof
- 2 m cable with unshielded 2 pole

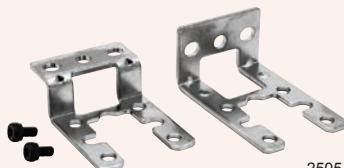


2505

SERIES PG WITH CABLE

PART NUMBER	TYPE	THREAD SIZE	PRESSURE	PRICE
ZPG010-PB-1/8-2	Pressure gauge	1/8" BSPP	15 bar	£65.88
ZPG001-VB-1/8-2	Vacuum gauge	1/8" BSPP	-30 hg	£65.88

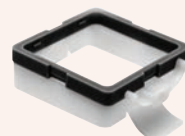
PG PRESSURE GAUGE ACCESSORIES



2505

MOUNTING BRACKET

PART NUMBER	DESCRIPTION	PRICE
ZPG-B	Mounting bracket	£7.60



2505

PANEL MOUNT ADAPTOR

PART NUMBER	DESCRIPTION	PRICE
ZPG-F	Panel mount adaptor	£7.60

MC SERIES

DESCRIPTION

The metal bowls of these filters come complete with a transparent sight glass and have a condensate drain valve. The standard regulator has a relieving diaphragm. The oil flow of the lubricator can be monitored via the small transparent cap and regulated by means of the special adjusting screw.

SPECIFICATIONS

Construction	Modular, compact with filtering element in HDPE
Materials	Zama, NBR, technopolymer
Operating temperature	0°C to 50°C at 10 bar
Porosity of filtering element	25 µm standard – 5 µm upon request
Draining of condensate	Manual – Semi-automatic standard
Finishing	Enamelled
Oil refilling	Without pressure (G1/4)
Oil for lubrication	Up to ISO VG32
Inlet pressure	Standard drain 0.3 to 16 bar Protected depressurisation 0.3 to 16 bar Depressurisation 0.3 to 10 bar
Regulator inlet pressure	0 to 16 bar
Regulator outlet pressure	0.5 to 10 bar or 0 to 4 bar
Lubricator operating pressure	0 to 16 bar



**SERIES MC
INCLUDES GAUGE
AND BRACKET**

2505

PART NUMBER	CONNECTION	PRICE
ZMC104FRL25	1/4"	£146.75

MX SERIES

DESCRIPTION

Filter, regulator and lubricator assembly through rapid clamps. Compact design. Quick and easy maintenance. Reduced weight.

SPECIFICATIONS

Construction	Modular, compact
Mounting	Vertical in-line or wall mounting (by clamps) or panel mounting
Operating temperature	0°C to 60°C at 10 bar

Also available with
port for external
pressure gauge.
Please ask for
details.



**SERIES MX
WITH INTEGRATED GAUGE**

2505

PART NUMBER	SIZE	PORT	PRICE
ZMX2-3/8-000014	MX2	3/8"	£199.72
ZMX2-1/2-000014	MX2	1/2"	£199.72
ZMX2-3/4-000014	MX2	3/4"	£199.72
ZMX3-3/4-000014	MX3	3/4"	£333.79
ZMX3-1-000014	MX3	1"	£333.79

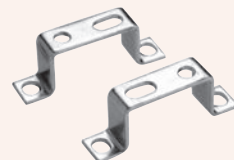
FRL ACCESSORIES – FOR USE WITH SERIES MC



**TERMINAL FLANGES – KIT A
SERIES MC**

2505

PART NUMBER	CONNECTION	PRICE
ZMC104FL	1/4"	£16.47



**2 MOUNTING BRACKETS – KIT B
SERIES MC**

2505

PART NUMBER	CONNECTION	PRICE
ZMC104ST	1/4"	£5.16

FRL ACCESSORIES – FOR USE WITH SERIES MD

MOUNTING BRACKET SERIES MC, M AND MD



2505

PART NUMBER	FOR USE WITH	PRICE
ZC114-ST	MC, M and MD	£2.68

MOUNTING BRACKET SERIES MD



2505

PART NUMBER	FOR USE WITH	PRICE
ZMD1-ST	MD	£3.76

SCREWS FOR WALL MOUNTING SERIES MD



2505

PART NUMBER	SUPPLIED WITH	PRICE
ZMD1-D	2 x white zinc plated screws M4 x 50	£0.27

THREADED CARTRIDGE KIT SERIES MD



2505

PART NUMBER	CONNECTION	PRICE
ZMD1-A-1/8	1/8"	£4.51
ZMD1-A-1/4	1/4"	£4.51
ZMD1-A-3/8	3/8"	£4.51

SUPER RAPID FITTING KIT SERIES MD



2505

PART NUMBER	SIZE	PRICE
ZMD1-A-6	6 mm	£6.90
ZMD1-A-8	8 mm	£7.84
ZMD1-A-10	10 mm	£8.65

JOINING CARTRIDGE KIT SERIES MD



2505

PART NUMBER	SUPPLIED WITH	PRICE
ZMD1-C	4 x special white zinc plated screws	£3.11

FRL ACCESSORIES – FOR USE WITH SERIES MX

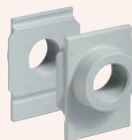
FIXING BRACKET SERIES MX



2505

PART NUMBER	FOR USE WITH	PRICE
ZMX2-S	MX2	£2.41
ZMX3-S	MX3	£3.73

TERMINAL FLANGES SERIES MX



2505

PART NUMBER	CONNECTION	PRICE
ZMX2-3/8-FL	3/8"	£15.64
ZMX2-1/2-FL	1/2"	£15.64
ZMX2-3/4-FL	3/4"	£15.64
ZMX3-3/4-FL	3/4"	£25.84
ZMX3-1-FL	1"	£25.84

RAPID CLAMP KIT SERIES MX2



2505

PART NUMBER	SUPPLIED WITH	PRICE
ZMX2-X	1 rapid clamp, 1 O-ring, 2 hexagonal nuts M5, 2 screws M5 x 69	£8.47
ZMX2-Z	1 rapid clamp, 1 O-ring, 1 hexagonal nut M5, 1 screw M5 x 69, 1 screw M5 x 85 for wall fixing	£8.47

SERIES MX3

ZMX3-X	1 rapid clamp, 1 O-ring, 2 square nuts M6, 2 screws M6 x 75	£12.31
ZMX3-Z	1 rapid clamp, 1 O-ring, 1 square nut M6, 1 screw M6 x 75, 1 screw M6 x 90 for wall fitting	£12.31

RAPID CLAMP KIT WITH WALL FIXING BRACKETS SERIES MX2



2505

PART NUMBER	SUPPLIED WITH	PRICE
ZMX2-Y	1 wall rapid clamp, 1 O-ring, 2 hexagonal nuts, 2 screws M5 x 69	£8.47

SERIES MX3

ZMX3-Y	1 Wall rapid clamp, 1 O-ring, 2 square nuts M6, 2 screws M6 x 75	£12.31
--------	---	--------

DESCRIPTION

ISO 6432 – Mini Cylinder Series 16 and 24 are manufactured according to the European Standard Specifications CETOP RP52-P and DIN/ISO 6432. Since Series 16 and 24 may be required to operate at very high speeds, a fixed mechanical cushioning has been fitted, as standard, in order to reduce wear by high impact loads.



You may also need ...



Reed switches

... see page 377, section 7

SPECIFICATIONS

Type of construction	Flanged
Operation	Series 16 Series 24
	Double acting, non-magnetic Double acting, magnetic
Materials	Aluminium end blocks. Stainless steel tube and piston rod. Polyurethane seals
Operating pressure	1 to 10 bar
Operating temperature	0°C to 80°C (with dry air -20°C)
Bore	ø16 mm, ø20 mm, ø25 mm
Mounting	Screw, flange, feet, trunnion

Non Standard strokes are now available upon request

Fully adjustable cushioning ø16-25 mm bore

SERIES 16 CYLINDERS



SERIES 16 – NON-MAGNETIC

Ø 8 mm BORE

2530

PART NUMBER	BORE	STROKE	PRICE
Z16N2A08A010	8 mm	10 mm	£35.22
Z16N2A08A025	8 mm	25 mm	£37.13
Z16N2A08A040	8 mm	40 mm	£37.90
Z16N2A08A050	8 mm	50 mm	£38.68
Z16N2A08A080	8 mm	80 mm	£39.76
Z16N2A08A100	8 mm	100 mm	£40.55

Ø 10 mm BORE

Z16N2A10A010	10 mm	10 mm	£35.22
Z16N2A10A025	10 mm	25 mm	£37.13
Z16N2A10A040	10 mm	40 mm	£37.90
Z16N2A10A050	10 mm	50 mm	£38.68
Z16N2A10A080	10 mm	80 mm	£39.76
Z16N2A10A100	10 mm	100 mm	£40.55

Ø 12 mm BORE

Z16N2A12A010	12 mm	10 mm	£40.55
Z16N2A12A025	12 mm	25 mm	£41.36
Z16N2A12A040	12 mm	40 mm	£42.33
Z16N2A12A050	12 mm	50 mm	£43.21
Z16N2A12A080	12 mm	80 mm	£44.00
Z16N2A12A100	12 mm	100 mm	£45.74

SERIES 24 CYLINDERS



SERIES 24 – MAGNETIC

Ø 16 mm BORE

2530

PART NUMBER	BORE	STROKE	PRICE
Z24N2A16A10	16 mm	10 mm	£42.33
Z24N2A16A25	16 mm	25 mm	£43.21
Z24N2A16A40	16 mm	40 mm	£44.00
Z24N2A16A50	16 mm	50 mm	£45.11
Z24N2A16A80	16 mm	80 mm	£46.75
Z24N2A16A100	16 mm	100 mm	£47.51

Ø 20 mm BORE

Z24N2A20A10	20 mm	10 mm	£44.00
Z24N2A20A25	20 mm	25 mm	£45.11
Z24N2A20A40	20 mm	40 mm	£45.74
Z24N2A20A50	20 mm	50 mm	£46.75
Z24N2A20A80	20 mm	80 mm	£49.35
Z24N2A20A100	20 mm	100 mm	£51.25

Ø 25 mm BORE

Z24N2A25A10	25 mm	10 mm	£49.35
Z24N2A25A25	25 mm	25 mm	£50.18
Z24N2A25A40	25 mm	40 mm	£51.25
Z24N2A25A50	25 mm	50 mm	£51.92
Z24N2A25A80	25 mm	80 mm	£53.79
Z24N2A25A100	25 mm	100 mm	£54.61

SERIES 16 & 24 ACCESSORIES

FEET TYPE BRACKET



2530

PART NUMBER	CYLINDER BORE	PRICE
ZB-8-10	8 – 10 mm	£5.60
ZB-12/16	12 – 16 mm	£7.19
ZB-20-25	20 – 25 mm	£8.21

FLANGE BRACKET



2530

PART NUMBER	CYLINDER BORE	PRICE
ZE-8-10	8 – 10 mm	£2.54
ZE-12/16	12 – 16 mm	£3.00
ZE-20/25	20 – 25 mm	£4.17

TRUNNION BRACKET



2530

PART NUMBER	CYLINDER BORE	PRICE
ZI-8-10	8 – 10 mm	£5.97
ZI-12/16	12 – 16 mm	£6.10
ZI-20/25	20 – 25 mm	£8.03

ROD FORK END



2530

PART NUMBER	CYLINDER BORE	PRICE
ZG-8-10	8 – 10 mm	£5.38
ZG-12-16	12 – 16 mm	£3.76
ZG-20	20 mm	£3.86
ZG-25-32	25 – 32 mm	£3.49

DESCRIPTION

Series 31 compact single and double acting cylinders are available in 10 different bore sizes from $\varnothing 12$ to $\varnothing 100$. The guides are inserted in the external profile, parallel to the sliding axis on three sides. These guides are used to locate the switches that sense the piston position. The construction design of these cylinders provides excellent axis stability. They are available either with a male or female thread. These cylinders can be supplied in W version for high temperatures (140°C). The W version is not magnetic.

FEATURES

- Compact design
- Wide range of models available
- Standard magnetic
- High temperature (double acting and non magnetic)

SPECIFICATIONS

Type of construction	Compact profile
Operation	Single and double acting
Materials	AL body and end blocks: rolled stainless steel, AISI 303 rod: AL piston rod, PU seals or FKM seals for high temperatures (140°C)
Brackets	Flange, feet, trunnion
Operating temperature	0°C to 80°C (with dry air -20°C)
Operating pressure	1 to 10 bar (double acting) 2 to 10 bar (single acting)

You may also need ...



Reed switches

... see page 377, section 7



2530



2530

SERIES 31

Ø 12 mm BORE

PART NUMBER	BORE	STROKE	PRICE
Z31F2A012A005	12 mm	5 mm	£47.39
Z31F2A012A010	12 mm	10 mm	£47.69
Z31F2A012A015	12 mm	15 mm	£47.93
Z31F2A012A020	12 mm	20 mm	£48.17
Z31F2A012A025	12 mm	25 mm	£48.46
Z31F2A012A030	12 mm	30 mm	£48.67
Z31F2A012A040	12 mm	40 mm	£49.13

Ø 16 mm BORE

Z31F2A016A005	16 mm	5 mm	£48.67
Z31F2A016A010	16 mm	10 mm	£48.90
Z31F2A016A015	16 mm	15 mm	£49.20
Z31F2A016A020	16 mm	20 mm	£49.48
Z31F2A016A025	16 mm	25 mm	£49.74
Z31F2A016A030	16 mm	30 mm	£49.85
Z31F2A016A040	16 mm	40 mm	£49.88

Ø 20 mm BORE

Z31F2A020A005	20 mm	5 mm	£52.67
Z31F2A020A010	20 mm	10 mm	£52.69
Z31F2A020A015	20 mm	15 mm	£53.13
Z31F2A020A020	20 mm	20 mm	£53.57
Z31F2A020A025	20 mm	25 mm	£53.88
Z31F2A020A030	20 mm	30 mm	£54.27
Z31F2A020A040	20 mm	40 mm	£55.22

Ø 25 mm BORE

Z31F2A025A005	25 mm	5 mm	£55.90
Z31F2A025A010	25 mm	10 mm	£76.91
Z31F2A025A015	25 mm	15 mm	£56.91
Z31F2A025A020	25 mm	20 mm	£57.29
Z31F2A025A025	25 mm	25 mm	£57.71
Z31F2A025A030	25 mm	30 mm	£58.24
Z31F2A025A040	25 mm	40 mm	£59.16

Ø 32 mm BORE

Z31F2A032A005	32 mm	5 mm	£60.63
Z31F2A032A010	32 mm	10 mm	£61.34
Z31F2A032A015	32 mm	15 mm	£62.01
Z31F2A032A020	32 mm	20 mm	£62.65
Z31F2A032A025	32 mm	25 mm	£63.36
Z31F2A032A030	32 mm	30 mm	£64.00
Z31F2A032A040	32 mm	40 mm	£65.39

SERIES 31

Ø 40 mm BORE

Z31F2A040A005	40 mm	5 mm	£78.32
Z31F2A040A010	40 mm	10 mm	£79.55
Z31F2A040A015	40 mm	15 mm	£80.77
Z31F2A040A020	40 mm	20 mm	£82.10
Z31F2A040A025	40 mm	25 mm	£83.24
Z31F2A040A030	40 mm	30 mm	£84.50
Z31F2A040A040	40 mm	40 mm	£87.00
Z31F2A040A050	40 mm	50 mm	£89.52

Ø 50 mm BORE

Z31F2A050A010	50 mm	10 mm	£94.55
Z31F2A050A015	50 mm	15 mm	£94.55
Z31F2A050A020	50 mm	20 mm	£95.99
Z31F2A050A025	50 mm	25 mm	£97.42
Z31F2A050A030	50 mm	30 mm	£98.90
Z31F2A050A040	50 mm	40 mm	£101.79
Z31F2A050A050	50 mm	50 mm	£104.58

Ø 63 mm BORE

Z31F2A063A010	63 mm	10 mm	£112.68
Z31F2A063A015	63 mm	15 mm	£114.62
Z31F2A063A020	63 mm	20 mm	£116.66
Z31F2A063A025	63 mm	25 mm	£118.78
Z31F2A063A030	63 mm	30 mm	£120.73
Z31F2A063A040	63 mm	40 mm	£124.71
Z31F2A063A050	63 mm	50 mm	£128.75

Ø 80 mm BORE

Z31F2A080A010	80 mm	10 mm	£141.59
Z31F2A080A015	80 mm	15 mm	£144.45
Z31F2A080A020	80 mm	20 mm	£147.34
Z31F2A080A025	80 mm	25 mm	£150.12
Z31F2A080A030	80 mm	30 mm	£153.06
Z31F2A080A040	80 mm	40 mm	£158.78
Z31F2A080A050	80 mm	50 mm	£164.39

Ø 100 mm BORE

Z31F2A100A010	100 mm	10 mm	£214.47
Z31F2A100A015	100 mm	15 mm	£179.78
Z31F2A100A020	100 mm	20 mm	£183.53
Z31F2A100A025	100 mm	25 mm	£187.36
Z31F2A100A030	100 mm	30 mm	£191.13
Z31F2A100A040	100 mm	40 mm	£198.62
Z31F2A100A050	100 mm	50 mm	£206.12

DESCRIPTION

A compact actuator in compliance with ISO 21287. The optimised profile body gives a reduction of weight and dimensions, in compliance with the ISO standard. Suitable for the automotive industry, food & packaging, and general automation.

AVAILABLE UPON REQUEST

- Single acting
- Through rod
- Guided cylinder (anti-rotational)
- Male piston rod thread

SPECIFICATIONS

Type of construction	Compact profile
Operation	Magnetic, double acting
Materials	Anodised aluminium extrusion cylinder barrel. Cast aluminium end blocks. Polyurethane seals. Stainless steel piston rod. Zinc plated steel piston rod lock nut.
Cushioning	End of stroke buffers
Operating pressure	1 to 10 bar
Operating temperature	0°C to 80°C (with dry air -20°C to +80°C)
Media	Clean air, without lubrication
Speed	10 to 1000 mm/sec (without load)



2530

SERIES 32

Ø 20 mm BORE

PART NUMBER	BORE	STROKE	PRICE
Z32M2A20005	20 mm	5 mm	£50.65
Z32M2A20010	20 mm	10 mm	£50.65
Z32M2A20015	20 mm	15 mm	£51.04
Z32M2A20020	20 mm	20 mm	£51.45
Z32M2A20025	20 mm	25 mm	£51.80
Z32M2A20030	20 mm	30 mm	£52.23
Z32M2A20040	20 mm	40 mm	£53.06
Z32M2A20050	20 mm	50 mm	£53.79

Ø 25 mm BORE

Z32M2A25005	25 mm	5 mm	£53.79
Z32M2A25010	25 mm	10 mm	£54.21
Z32M2A25015	25 mm	15 mm	£54.61
Z32M2A25020	25 mm	20 mm	£55.00
Z32M2A25025	25 mm	25 mm	£55.41
Z32M2A25030	25 mm	30 mm	£55.81
Z32M2A25040	25 mm	40 mm	£57.02
Z32M2A25050	25 mm	50 mm	£57.83

Ø 32 mm BORE

Z32M2A32005	32 mm	5 mm	£58.23
Z32M2A32010	32 mm	10 mm	£59.04
Z32M2A32015	32 mm	15 mm	£59.45
Z32M2A32020	32 mm	20 mm	£60.21
Z32M2A32025	32 mm	25 mm	£60.62
Z32M2A32030	32 mm	30 mm	£61.82
Z32M2A32040	32 mm	40 mm	£62.98
Z32M2A32050	32 mm	50 mm	£64.23

Ø 40 mm BORE

Z32M2A40005	40 mm	5 mm	£74.99
Z32M2A40010	40 mm	10 mm	£75.03
Z32M2A40015	40 mm	15 mm	£77.76
Z32M2A40020	40 mm	20 mm	£78.96
Z32M2A40025	40 mm	25 mm	£79.77
Z32M2A40030	40 mm	30 mm	£81.35
Z32M2A40040	40 mm	40 mm	£83.73
Z32M2A40050	40 mm	50 mm	£86.09



2530

SERIES 32

Ø 50 mm BORE

Z32M2A50010	50 mm	10 mm	£89.27
Z32M2A50015	50 mm	15 mm	£90.86
Z32M2A50020	50 mm	20 mm	£91.68
Z32M2A50025	50 mm	25 mm	£93.29
Z32M2A50030	50 mm	30 mm	£94.91
Z32M2A50040	50 mm	40 mm	£98.09
Z32M2A50050	50 mm	50 mm	£101.32

Ø 63 mm BORE

Z32M2A63010	63 mm	10 mm	£108.48
Z32M2A63015	63 mm	15 mm	£110.07
Z32M2A63020	63 mm	20 mm	£112.43
Z32M2A63025	63 mm	25 mm	£114.04
Z32M2A63030	63 mm	30 mm	£115.61
Z32M2A63040	63 mm	40 mm	£119.62
Z32M2A63050	63 mm	50 mm	£124.42

Ø 80 mm BORE

Z32M2A80010	80 mm	10 mm	£136.36
Z32M2A80015	80 mm	15 mm	£138.76
Z32M2A80020	80 mm	20 mm	£141.96
Z32M2A80025	80 mm	25 mm	£144.36
Z32M2A80030	80 mm	30 mm	£146.72
Z32M2A80040	80 mm	40 mm	£153.11
Z32M2A80050	80 mm	50 mm	£158.67

Ø 100 mm BORE

Z32M2A10010	100 mm	10 mm	£169.08
Z32M2A10015	100 mm	15 mm	£173.04
Z32M2A10020	100 mm	20 mm	£176.23
Z32M2A10025	100 mm	25 mm	£180.99
Z32M2A10030	100 mm	30 mm	£184.19
Z32M2A10040	100 mm	40 mm	£191.37
Z32M2A10050	100 mm	50 mm	£198.55

You may also need ...



Reed switches

... see page 377, section 7

Non Standard strokes are now available upon request



FOOT MOUNTS – PAIR
SERIES 32

2530

PART NUMBER	CYLINDER BORE	PRICE
ZB-32-20	20 mm	£3.53
ZB-31-25	25 mm	£3.73
ZB-41-32	32 mm	£9.14
ZB-41-40	40 mm	£10.47
ZB-41-50	50 mm	£11.65
ZB-41-63	63 mm	£14.79
ZB-41-80	80 mm	£17.75
ZB-41-100	100 mm	£26.07



90° SWIVEL COMBINATION
SERIES 32

2530

PART NUMBER	CYLINDER BORE	PRICE
ZL-32-20	20 mm	£16.37
ZL-32-25	25 mm	£17.63
ZL-41-32	32 mm	£11.85
ZL-41-40	40 mm	£13.34
ZL-41-50	50 mm	£17.75
ZL-41-63	63 mm	£20.78
ZL-41-80	80 mm	£26.67
ZL-41-100	100 mm	£38.01



FEMALE REAR TRUNNION
SERIES 32

2530

PART NUMBER	CYLINDER BORE	PRICE
ZC-41-32	32 mm	£11.85
ZC-41-40	40 mm	£13.34
ZC-41-50	50 mm	£16.23
ZCH-41-63	63 mm	£19.41
ZCH-41-80	80 mm	£25.36
ZCH-41-100	100 mm	£35.53



ROD FORK END
SERIES 32

2530

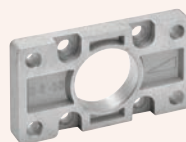
PART NUMBER	CYLINDER BORE	PRICE
ZG-20	20 mm	£3.86
ZG-25-32	25 – 32 mm	£3.49
ZG-40	40 mm	£5.38
ZG-50-63	50 – 63 mm	£11.67
ZG-80-100	80 – 100 mm	£20.78



90° SWIVEL TRUNNION
SERIES 32

2530

PART NUMBER	CYLINDER BORE	PRICE
ZZC-32	32 mm	£15.53
ZZC-40	40 mm	£21.67
ZZC-50	50 mm	£23.23
ZZC-63	63 mm	£33.36
ZZC-80	80 mm	£34.83
ZZC-100	100 mm	£53.33



REAR AND FRONT FLANGE
SERIES 32

2530

PART NUMBER	CYLINDER BORE	PRICE
ZDE-32-20	20 mm	£19.24
ZDE-32-25	25 mm	£20.09
ZDE-41-32	32 mm	£10.47
ZDE-41-40	40 mm	£11.49
ZDE-41-50	50 mm	£14.07
ZDE-41-63	63 mm	£16.70
ZDE-41-80	80 mm	£24.02
ZDE-41-100	100 mm	£31.39



CLEVIS PIN
SERIES 32

2530

PART NUMBER	CYLINDER BORE	PRICE
ZS-32	32 mm	£3.35
ZS-40	40 mm	£3.95
ZS-50	50 mm	£4.09
ZS-63	63 mm	£5.31
ZS-80	80 mm	£6.06
ZS-100	100 mm	£7.08

You may also need ...

John Guest
tube and fittings



... see pages 622 – 649, section 12

DESCRIPTION

MAGNETIC DIN / ISO 15552

The Series 61 has been designed to comply with the dimensions laid down in the DIN / ISO 15552 standards. The extruded aluminium tube, with improved aesthetics, has two grooves (on three sides), where the proximity switch Model SKR can be directly mounted. This enables the same cylinder dimensions to be retained. Four tie rods, located inside the tube, make the mounting of the end blocks extremely secure.

SPECIFICATIONS

Type of construction	Profile
Operation	Double acting, magnetic
Materials	Aluminium end blocks, rolled stainless steel rod, anodised profile aluminium tube, NBR seals
Operating pressure	1 to 10 bar
Operating temperature	0°C to 80°C (with dry air -20°C)
Bore	ø32 mm, ø40 mm, ø50 mm, ø63 mm, ø80 mm, ø100 mm
Mounting	Front flange, rear flange, feet, front and rear trunnion, swivel combination



CYLINDERS



SERIES 61
Ø 32 mm BORE

2530

PART NUMBER	BORE	STROKE	PRICE
Z61032A025	32 mm	25 mm	£80.76
Z61032A050	32 mm	50 mm	£82.57
Z61032A075	32 mm	75 mm	£84.15
Z61032A080	32 mm	80 mm	£84.59
Z61032A100	32 mm	100 mm	£86.44

Ø 40 mm BORE

Z61040A025	40 mm	25 mm	£93.39
Z61040A050	40 mm	50 mm	£95.86
Z61040A075	40 mm	75 mm	£98.20
Z61040A080	40 mm	80 mm	£98.93
Z61040A100	40 mm	100 mm	£100.91

Ø 50 mm BORE

Z61050A025	50 mm	25 mm	£117.00
Z61050A050	50 mm	50 mm	£117.78
Z61050A075	50 mm	75 mm	£121.39
Z61050A080	50 mm	80 mm	£121.85
Z61050A100	50 mm	100 mm	£124.93

Ø 63 mm BORE

Z61063A025	63 mm	25 mm	£137.36
Z61063A050	63 mm	50 mm	£141.35
Z61063A075	63 mm	75 mm	£145.30
Z61063A080	63 mm	80 mm	£146.21
Z61063A100	63 mm	100 mm	£149.41

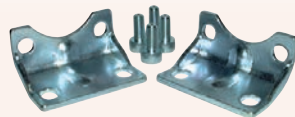
Ø 80 mm BORE

Z61080A025	80 mm	25 mm	£188.55
Z61080A050	80 mm	50 mm	£193.88
Z61080A075	80 mm	75 mm	£200.41
Z61080A080	80 mm	80 mm	£200.63
Z61080A100	80 mm	100 mm	£204.80

Ø 100 mm BORE

Z61100A025	100 mm	25 mm	£236.90
Z61100A050	100 mm	50 mm	£243.31
Z61100A075	100 mm	75 mm	£248.51
Z61100A080	100 mm	80 mm	£250.90
Z61100A100	100 mm	100 mm	£255.77

ACCESSORIES



2530

FEET

SERIES 61 & 63

PART NUMBER	CYLINDER BORE	PRICE
ZB-41-32	32 mm	£9.14
ZB-41-40	40 mm	£10.47
ZB-41-50	50 mm	£11.65
ZB-41-63	63 mm	£14.79
ZB-41-80	80 mm	£17.75
ZB-41-100	100 mm	£26.07



2530

FORK ROD END

SERIES 61 & 63

PART NUMBER	CYLINDER BORE	PRICE
ZG-25-32	32 mm	£3.49
ZG-40	40 mm	£5.38
ZG-50-63	50 – 63 mm	£11.67
ZG-80-100	80 – 100 mm	£20.78



2530

SPHERICAL BEARING ROD EYE

SERIES 61 & 63

PART NUMBER	CYLINDER BORE	PRICE
ZGA-32	32 mm	£21.84
ZGA-40	40 mm	£25.83
ZGA-50-63	50 – 63 mm	£54.86
ZGA-80-100	80 – 100 mm	£73.90



2530

LOCKING NUT

SERIES 61 & 63

PART NUMBER	CYLINDER BORE	PRICE
ZU-25-32	25 – 32 mm	£0.52
ZU-40	40 mm	£0.80
ZU-50-63	50 – 63 mm	£1.26
ZU-80-100	80 – 100 mm	£1.88

- Available upon request
- Cylinders with profile barrel up to ø160 bore
 - External tie rod construction cylinder up to ø320 bore
 - Non Standard strokes

You may also need ...



Reed switches

... see page 377, section 7



FEMALE REAR TRUNNION
SERIES 61 & 63

2530

PART NUMBER	CYLINDER BORE	PRICE
ZC-41-32	32 mm	£11.85
ZC-41-40	40 mm	£13.34
ZC-41-50	50 mm	£16.23
ZCH-41-63	63 mm	£19.41
ZCH-41-80	80 mm	£25.36
ZCH-41-100	100 mm	£35.53



FRONT AND REAR FLANGE
SERIES 61

2530

PART NUMBER	CYLINDER BORE	PRICE
ZDE-41-32	32 mm	£10.47
ZDE-41-40	40 mm	£11.49
ZDE-41-50	50 mm	£14.07
ZDE-41-63	63 mm	£16.70
ZDE-41-80	80 mm	£24.02
ZDE-41-100	100 mm	£31.39



MALE REAR TRUNNION
SERIES 61 & 63

2530

PART NUMBER	CYLINDER BORE	PRICE
ZL-41-32	32 mm	£11.85
ZL-41-40	40 mm	£13.34
ZL-41-50	50 mm	£17.75
ZL-41-63	63 mm	£20.78
ZL-41-80	80 mm	£26.67
ZL-41-100	100 mm	£38.01



CENTRE TRUNNION
SERIES 61

2530

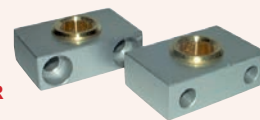
PART NUMBER	CYLINDER BORE	PRICE
ZF-61-32	32 mm	£77.24
ZF-61-40	40 mm	£83.92
ZF-61-50	50 mm	£97.45
ZF-61-63	63 mm	£115.47
ZF-61-80	80 mm	£141.33
ZF-61-100	100 mm	£160.52



FEMALE FRONT TRUNNION
SERIES 61 & 63

2530

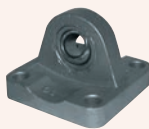
PART NUMBER	CYLINDER BORE	PRICE
ZH-41-32	32 mm	£11.85
ZH-41-40	40 mm	£13.34
ZH-41-50	50 mm	£16.21
ZCH-41-63	63 mm	£19.41
ZCH-41-80	80 mm	£25.36
ZCH-41-100	100 mm	£35.53



COUNTER BRACKET PAIR
SERIES 61

2530

PART NUMBER	CYLINDER BORE	PRICE per pair
ZBF-32	32 mm	£39.03
ZBF-40-50	40 – 50 mm	£48.81
ZBF-63-80	63 – 80 mm	£58.18
ZBF-100-125	100 – 125 mm	£70.85



TRUNNION BALL JOINT
SERIES 61 & 63

2530

PART NUMBER	CYLINDER BORE	PRICE
ZR-41-32	32 mm	£26.74
ZR-41-40	40 mm	£28.02
ZR-41-50	50 mm	£30.67
ZR-41-63	63 mm	£40.31
ZR-41-80	80 mm	£47.94
ZR-41-100	100 mm	£64.73



FORK ROD END
SERIES 61 & 63

2530

PART NUMBER	CYLINDER BORE	PRICE
ZGY-32	32 mm	£23.40
ZGY-40	40 mm	£30.76
ZGY-50-63	50 – 63 mm	£47.35
ZGY-80-100	80 – 100 mm	£70.59



TRUNNION PIN
SERIES 61 & 63

2530

PART NUMBER	CYLINDER BORE	PRICE
ZS-32	32 mm	£3.35
ZS-40	40 mm	£3.95
ZS-50	50 mm	£4.09
ZS-63	63 mm	£5.31
ZS-80	80 mm	£6.06
ZS-100	100 mm	£7.08

DESCRIPTION

The new Series 63 pneumatic cylinders, which comply with the ISO 15552 standard, have been developed to guarantee high performance whilst also offering significant reductions in weight. The new adjustable pneumatic and mechanical cushioning system ensures Series 63 also reduces the noise caused by the impact of the piston on the end block.

FEATURES

- In compliance with ISO 15552 standards and with the previous DIN/ISO 6431 – VDMA 24562 standards
- Clean design
- Weight reduced by 25%
- Adjustable pneumatic and mechanical end-stroke cushioning
- Wide range of installation accessories
- Rolled stainless steel rod

VDMA



SPECIFICATIONS

Type of construction	Profile (with screws) and round tube (with tie-rods)
Operation	Double acting
Materials	AISI 420B rod, PU rod seal, aluminium end block, NBR counterbore seal, anodised aluminium extruded profile, PU piston seal, technopolymer (ø32) or aluminium (ø40-100), PU cushion seal, zinc plated steel self-tapping screw and rod nut, technopolymer rod guide bush.
Operating pressure	1 to 10 bar
Operating temperature	0°C to 80°C (with dry air -20°C)
Bore	ø32 mm, ø40 mm, ø50 mm, ø63 mm, ø80 mm, ø100 mm
Mounting	Front / rear flange, foot mounting, with front / rear / centre / swivel trunnion

CYLINDERS



SERIES 63

Ø 32 mm BORE

2530

PART NUMBER	BORE	STROKE	PRICE
Z63MP2C032A0025	32 mm	25 mm	£79.02
Z63MP2C032A0050	32 mm	50 mm	£80.86
Z63MP2C032A0075	32 mm	75 mm	£82.73
Z63MP2C032A0080	32 mm	80 mm	£83.10
Z63MP2C032A0100	32 mm	100 mm	£84.58
Z63MP2C032A0125	32 mm	125 mm	£86.43
Z63MP2C032A0150	32 mm	150 mm	£88.28
Z63MP2C032A0160	32 mm	160 mm	£89.02
Z63MP2C032A0200	32 mm	200 mm	£91.98
Z63MP2C032A0250	32 mm	250 mm	£95.70
Z63MP2C032A0300	32 mm	300 mm	£99.40
Z63MP2C032A0320	32 mm	320 mm	£100.88
Z63MP2C032A0400	32 mm	400 mm	£106.81
Z63MP2C032A0500	32 mm	500 mm	£114.23

Ø 40 mm BORE

Z63MP2C040A0025	40 mm	25 mm	£91.79
Z63MP2C040A0050	40 mm	50 mm	£94.26
Z63MP2C040A0075	40 mm	75 mm	£96.73
Z63MP2C040A0080	40 mm	80 mm	£97.21
Z63MP2C040A0100	40 mm	100 mm	£99.18
Z63MP2C040A0125	40 mm	125 mm	£101.65
Z63MP2C040A0150	40 mm	150 mm	£104.10
Z63MP2C040A0160	40 mm	160 mm	£105.08
Z63MP2C040A0200	40 mm	200 mm	£109.02
Z63MP2C040A0250	40 mm	250 mm	£113.95
Z63MP2C040A0300	40 mm	300 mm	£118.87
Z63MP2C040A0320	40 mm	320 mm	£120.84
Z63MP2C040A0400	40 mm	400 mm	£128.72
Z63MP2C040A0500	40 mm	500 mm	£138.56

Ø 50 mm BORE

Z63MP2C050A0025	50 mm	25 mm	£107.20
Z63MP2C050A0050	50 mm	50 mm	£110.56
Z63MP2C050A0075	50 mm	75 mm	£113.90
Z63MP2C050A0080	50 mm	80 mm	£114.57
Z63MP2C050A0100	50 mm	100 mm	£117.24
Z63MP2C050A0125	50 mm	125 mm	£120.59
Z63MP2C050A0150	50 mm	150 mm	£123.94
Z63MP2C050A0160	50 mm	160 mm	£125.27
Z63MP2C050A0200	50 mm	200 mm	£130.64
Z63MP2C050A0250	50 mm	250 mm	£137.33
Z63MP2C050A0300	50 mm	300 mm	£144.02
Z63MP2C050A0320	50 mm	320 mm	£146.70
Z63MP2C050A0400	50 mm	400 mm	£157.41
Z63MP2C050A0500	50 mm	500 mm	£170.80



SERIES 63

Ø 63 mm BORE

2530

PART NUMBER	BORE	STROKE	PRICE
Z63MP2C063A0025	63 mm	25 mm	£124.39
Z63MP2C063A0050	63 mm	50 mm	£127.94
Z63MP2C063A0075	63 mm	75 mm	£131.52
Z63MP2C063A0080	63 mm	80 mm	£132.23
Z63MP2C063A0100	63 mm	100 mm	£135.08
Z63MP2C063A0125	63 mm	125 mm	£138.66
Z63MP2C063A0150	63 mm	150 mm	£142.22
Z63MP2C063A0160	63 mm	160 mm	£143.64
Z63MP2C063A0200	63 mm	200 mm	£149.36
Z63MP2C063A0250	63 mm	250 mm	£156.49
Z63MP2C063A0300	63 mm	300 mm	£163.63
Z63MP2C063A0320	63 mm	320 mm	£166.48
Z63MP2C063A0400	63 mm	400 mm	£177.90
Z63MP2C063A0500	63 mm	500 mm	£192.17

Ø 80 mm BORE

Z63MP2C080A0025	80 mm	25 mm	£173.16
Z63MP2C080A0050	80 mm	50 mm	£178.72
Z63MP2C080A0075	80 mm	75 mm	£184.28
Z63MP2C080A0080	80 mm	80 mm	£185.39
Z63MP2C080A0100	80 mm	100 mm	£189.84
Z63MP2C080A0125	80 mm	125 mm	£195.40
Z63MP2C080A0150	80 mm	150 mm	£200.95
Z63MP2C080A0160	80 mm	160 mm	£203.19
Z63MP2C080A0200	80 mm	200 mm	£212.07
Z63MP2C080A0250	80 mm	250 mm	£223.20
Z63MP2C080A0300	80 mm	300 mm	£234.32
Z63MP2C080A0320	80 mm	320 mm	£238.76
Z63MP2C080A0400	80 mm	400 mm	£256.56
Z63MP2C080A0500	80 mm	500 mm	£278.79

Ø 100 mm BORE

Z63MP2C100A0025	100 mm	25 mm	£212.77
Z63MP2C100A0050	100 mm	50 mm	£219.71
Z63MP2C100A0075	100 mm	75 mm	£226.66
Z63MP2C100A0080	100 mm	80 mm	£228.04
Z63MP2C100A0100	100 mm	100 mm	£233.60
Z63MP2C100A0125	100 mm	125 mm	£240.55
Z63MP2C100A0150	100 mm	150 mm	£247.48
Z63MP2C100A0160	100 mm	160 mm	£250.26
Z63MP2C100A0200	100 mm	200 mm	£261.37
Z63MP2C100A0250	100 mm	250 mm	£275.26
Z63MP2C100A0300	100 mm	300 mm	£289.14
Z63MP2C100A0320	100 mm	320 mm	£294.69
Z63MP2C100A0400	100 mm	400 mm	£316.91
Z63MP2C100A0500	100 mm	500 mm	£344.68

MAGNETIC PROXIMITY SWITCHES

DESCRIPTION

The SK – CSV sensors are designed to fit into the grooves provided in the profile barrel of compact, rodless and ISO cylinders or on the surface of roundline and tie rod cylinders by using mounting bands or brackets.



SWITCHES REED



2530

PART NUMBER	SLOT	WIRE	VOLTAGE	CABLE	PRICE
ZSKR2C01200	T	2	3 – 130 V AC/DC	2 m	£26.17
ZCSV-220	V	2	10 – 110 V AC/DC	2 m	£26.59
ZSKR3C01200	T	3	5 – 30 V AC/DC	2 m	£38.92
ZCSV-232	V	3	5 – 30 V AC/DC	2 m	£32.66
ZSKR6C01500	T	2	5 – 230 V AC/DC	5 m	£83.55

MAGNETO RESISTIVE– PNP

ZSKH3C01200	T	3	3 – 28 V DC	2 m	£56.94
ZCSV-332	V	3	10 – 27 V DC	2 m	£43.16

SWITCHES REED WITH M8 CONNECTOR



2530

PART NUMBER	SLOT	WIRE	VOLTAGE	CABLE	PRICE
ZSKR2C01M8	T	2	5 – 50 V AC/DC	2 m	£45.73
ZCSV-250N	V	2	10 – 110 V AC/DC	2 m	£43.16
ZSKR3C01M8	T	3	5 – 30 V AC/DC	2 m	£47.76
ZCSV-262	V	3	5 – 30 V AC/DC	2 m	£44.79

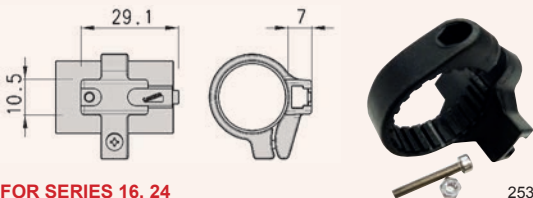
SWITCHES FOR USE WITH SERIES 63 PROFILE CYLINDERS REED



2530

PART NUMBER	SLOT	WIRE	VOLTAGE	CABLE	PRICE
ZCSH-223-2	H	2	10 – 30 V AC/DC	2 m	£21.26
ZCSH-233-2	H	3	10 – 30 V AC/DC	2 m	£24.50

BRACKETS – For Use With “T” Slot Type Switches



FOR SERIES 16, 24

2530

PART NUMBER	BORE	PRICE
ZSF16	16 mm	£4.01
ZSF20	20 mm	£4.01
ZSF25	25 mm	£4.01

DESCRIPTION

The Series A solenoid valves are of the directly operated type and can be used with dry or lubricated air. They are available in the 2/2 and 3/2-way versions with normally closed or normally open operations.

Symbol key
Fit together

See page 385



2530

STANDARD

PART NUMBER	FUNCTION	THREAD PORT	NOMINAL DIA.	PRICE
ZA321-0C2	2-Way NC	M5	1.5 mm	£36.07
ZA321-1C2	2-Way NC	1/8"	1.5 mm	£36.07
ZA321-1D2	2-Way NC	1/8"	2.0 mm	£37.12
ZA321-1E2	2-Way NC	1/8"	2.5 mm	£38.33
ZA322-0C2	2-Way NO	M5	1.8 mm	£43.06
ZA322-1C2	2-Way NO	1/8"	1.8 mm	£43.06
ZA331-0C2	3-Way NC	M5	1.5 mm	£30.14
ZA331-1C2	3-Way NC	1/8"	1.5 mm	£30.14
ZA332-0C2	3-Way NO	M5	1.5 mm	£35.94
ZA332-1C2	3-Way NO	1/8"	1.5 mm	£35.94



2530

FOR MANIFOLD ASSEMBLY

PART NUMBER	FUNCTION	THREAD PORT	NOMINAL DIA.	PRICE
ZAA31-0C2	3-Way NC	M5	1.5 mm	£38.67
ZAA31-CC2	3-Way NC	ø4 mm	1.5 mm	£40.49



2530

STANDARD

PART NUMBER	FUNCTION	THREAD PORT	NOMINAL DIA.	PRICE
ZA431-1C2	3-Way NC	1/8"	1.5 mm	£39.83



2530

STANDARD

PART NUMBER	FUNCTION	INLET	OUTLET	PRICE
ZA331-3C2	3-Way NC	M5	1/8"	£32.13

SPECIFICATIONS

Type of construction	Poppet type
Valve group	2/2, 3/2-way position. Normally Closed (NC) or Normally Open (NO)
Materials	OT58 brass body (nickel plated), other parts: stainless steel, NBR seals
Mounting	By M4 screws
Ports	M5, 1/8", cartridge ø4 mm
Operating temperature	0°C to 60°C (with dry air -20°C)
Operating pressure	Ask for details
Nominal pressure	6 bar



2530

STANDARD WITH MANUAL OVERRIDE

PART NUMBER	FUNCTION	INLET	OUTLET	PRICE
ZA331-4C2	3-Way NC	M5	1/8"	£36.40



2530

STANDARD

PART NUMBER	FUNCTION	O-RING	NOMINAL DIA.	PRICE
ZA631-AC2	3-Way NC	Rotatable	1.5 mm	£33.50



2530

STANDARD

PART NUMBER	FUNCTION	O-RING	NOMINAL DIA.	PRICE
ZA531-BC2	3-Way NC	Fixed	1.5 mm	£33.80



2530

STANDARD

PART NUMBER	FUNCTION	O-RING	NOMINAL DIA.	PRICE
ZA131-AC2	3-Way NC	Rotatable	1.5 mm	£34.71

You may also need ...

Coils and plugs



... see pages 379 and 383 – 385, section 7

6 SERIES

DESCRIPTION

The Series 6 solenoid valves are of the directly operated type and may be used equally well either with or without lubrication. They are available in the 2/2 and 3/2-way versions with normally closed or normally open operations.



2530

24 DC BASE TYPE ROTATABLE INTERFACE

PART NUMBER	FUNCTION	THREAD PORT	PRICE
Z600-450-A63	3-Way NC	-	£54.19

FIXED INTERFACE

Z600-457-A63	3-Way NC	-	£54.19
--------------	----------	---	--------



2530

24 DC BASE TYPE

PART NUMBER	FUNCTION	THREAD PORT	PRICE
Z623-15E-A63	2-Way NC	3/8"	£74.95
Z623-15F-A63	2-Way NC	3/8"	£74.95
Z623-15G-A63	2-Way NC	3/8"	£74.95

Other voltages available upon request

DESCRIPTION

Type of construction	Poppet type
Valve group	2/2, 3/2-way position. Normally Closed (NC) or Normally Open (NO)
Materials	Aluminium body, NBR seals, other parts stainless steel
Mounting	By M4 screws
Ports	1/8", 3/8", cartridge ø4 mm
Operating temperature	0°C to +80°C (with dry air -20°C to +60°C)
Operating pressure	Ask for details



2530

24 DC BASE TYPE THREADED BODY

PART NUMBER	FUNCTION	THREAD PORT	PRICE
Z638-150-A63	3-Way NC	1/8"	£50.39
Z648-150-A63	3-Way NO	1/8"	£58.12



2530

24 DC BASE TYPE FOR MANIFOLD ASSEMBLY

PART NUMBER	FUNCTION	THREAD PORT	PRICE
Z638M-101-A63	3-Way NC	1/8"	£61.27

SPARES AND ACCESSORIES



2530

DIN CONNECTOR

PART NUMBER	DESCRIPTION	PRICE
ZKA132000B9	DIN plug	£2.13

Valves also available
with the following
voltages:

12 V DC
110 V 50/60Hz
230 V 50/60Hz
24 V 50/60Hz

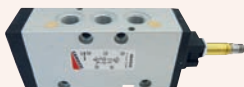
DESCRIPTION

The 1/8" Series 3 solenoid valves have been designed as 3/2 and 5/2 ways. The main advantages of these solenoid valves is their small overall dimensions, which make them particularly suitable for small spaces. The Series 4 solenoid valves are a balanced spool type, and are available with various methods of activation.



SERIES 3 & 4

3/2 SOL / SPRING



2530

PART NUMBER	FUNCTION	PORT SIZE	PRICE
Z338-015-02	3/2 NC	1/8"	£71.03
Z438-015-22	3/2 NC	1/8"	£86.27
Z434-015-22	3/2 NC	1/4"	£102.83
Z348-015-02	3/2 NO	1/8"	£71.03

5/2 SOL / SPRING

Z358-015-02	5/2	1/8"	£77.60
Z458-015-22	5/2	1/8"	£89.56
Z454-015-22	5/2	1/4"	£113.25
Z452-015-50	5/2	1/2"	£271.20
Z452-016-50	5/2	1/2"	£329.55



SERIES 3 & 4

3/2 SOL / SOL



2530

PART NUMBER	FUNCTION	PORT SIZE	PRICE
Z338-011-02	3/2	1/8"	£97.88
Z438-011-22	3/2	1/8"	£130.80
Z434-011-22	3/2	1/4"	£152.66

5/2 SOL / SOL

Z358-011-02	5/2	1/8"	£105.90
Z458-011-22	5/2	1/8"	£130.80
Z454-011-22	5/2	1/4"	£152.66
Z452-011-50	5/2	1/2"	£330.69

5/3 SOL / SOL

Z368-011-02	5/3 CC	1/8"	£170.07
Z468-011-22	5/3 CC	1/8"	£193.25
Z464-011-22	5/3 CC	1/4"	£211.59
Z378-011-02	5/3 CO	1/8"	£170.07
Z474-011-22	5/3 CO	1/4"	£211.59
Z388-011-02	5/3 C pressure	1/8"	£170.07



SERIES 3

5/2 SOL / SPRING EXTERNAL PILOT



2530

PART NUMBER	FUNCTION	PORT SIZE	PRICE
Z358-E15-02	5/2	1/8"	£84.25



SERIES 3

5/2 SOL / SOL EXTERNAL PILOT COMMAND



2530

PART NUMBER	FUNCTION	PORT SIZE	PRICE
Z358-E11-02	5/2	1/8"	£118.16

5/3 SOL / SOL

Z368-E11-02	5/3 CC	1/8"	£183.41
Z378-E11-02	5/3 CO	1/8"	£183.41
Z388-E11-02	5/3 C pressure	1/8"	£188.20

SPECIFICATIONS

Type of construction	Spool (pilot operated)
Valve group	3/2 Normally Closed (NC) or Normally Open (NO). 5/2 and 5/3-way port / position.
Materials	Aluminium body, stainless steel spool, NBR seals
Mounting	Through holes in valve body
Ports	1/8", 1/4", 1/2"
Operating temperature	0°C to 60°C (with dry air -20°C)
Operating pressure	10 bar maximum
Nominal pressure	6 bar
Minimum pilot pressure	2 bar
Nominal flow: Series 4	1/8" = 650 NI/min, 1/4" = 1250 NI/min, 1/2" = 1900 NI/min
Nominal flow: Series 3	1/8" = 500 NI/min
Class of insulation	Class H
Protection class	IP54 DIN 40050 (IP65 with DIN 43650/PG9 connector)
015 Actuation	Single solenoid, spring return (horizontal solenoids)
016 Actuation	Single solenoid, pneumatic spring return (horizontal solenoids)



SERIES 3

3/2 SOL / SPRING CAN BE MOUNTED ON MANIFOLD



2530

PART NUMBER	FUNCTION	PORT SIZE	PRICE
Z338L-015-2	3/2 NC	1/8"	£71.03
Z348L-015-2	3/2 NO	1/8"	£71.03



SERIES 3

3/2 SOL / SOL CAN BE MOUNTED ON MANIFOLD



2530

PART NUMBER	FUNCTION	PORT SIZE	PRICE
Z338L-011-2	3/2	1/8"	£97.88



SERIES 4

5/2 SOL / SPRING VERTICAL SOLENOID



2530

PART NUMBER	FUNCTION	PORT SIZE	PRICE
Z454-V15-22	5/2	1/4"	£119.45
Z454-V16-22	5/2	1/4"	£129.79



SERIES 4

5/2 SOL / SOL VERTICAL SOLENOID



2530

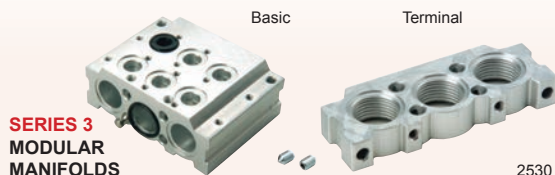
PART NUMBER	FUNCTION	PORT SIZE	PRICE
Z454-V11-22	5/2	1/4"	£160.87

You may also need ...

Coils and plugs



... see pages 379 and 383 – 385, section 7



SERIES 3 MODULAR MANIFOLDS

PART NUMBER	NO. OF POSITIONS	DESCRIPTION	PRICE
ZCNVL-3H2	2	Basic	£27.81
ZCNVL-3H3	3	Basic	£35.30
ZCNVL-311	1	Expansion	£25.98
ZCNVL-312	2	Expansion	£27.59
ZCNVL-313	3	Expansion	£34.35
ZCNVL-3H	-	End Terminal	£13.11

BLANKING PLATE FOR MANIFOLDS WITH OUTLETS

PART NUMBER	PORT SIZE	PRICE
ZCNVL-2	1/8"	£15.46
ZCNVL-3	1/4"	£17.47



SERIES 4 – MANIFOLD BASE WITH COMMON EXHAUSTS

PART NUMBER	NO. OF POSITIONS	PORT SIZE	PRICE
ZCNVL-42	2	1/8"	£46.92
ZCNVL-43	3	1/8"	£55.72
ZCNVL-44	4	1/8"	£65.28
ZCNVL-45	5	1/8"	£72.12
ZCNVL-46	6	1/8"	£85.13
ZCNVL-52	2	1/4"	£60.17
ZCNVL-53	3	1/4"	£73.92
ZCNVL-54	4	1/4"	£86.95
ZCNVL-55	5	1/4"	£99.45
ZCNVL-56	6	1/4"	£114.55

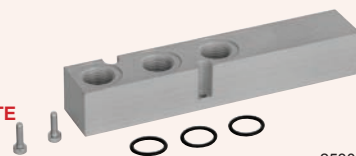
EXCLUDER

PART NUMBER	PORT SIZE	PRICE
ZCNVL-1L	ø3.2 mm	£11.92



INTERMEDIATE PLATE FOR MANIFOLDS WITH OUTLETS

PART NUMBER	PORT SIZE	PRICE
ZCNVL-3P1	1/4"	£20.46



BLANKING PLUG FOR ZCNVL MANIFOLDS

PART NUMBER	PORT SIZE	PRICE
ZTCNVL-3	1/8"	£1.47
ZTCNVL-5	1/4"	£1.59



INTERMEDIATE PLATE FOR MANIFOLDS WITH OUTLETS

PART NUMBER	PORT SIZE	PRICE
ZCNVL-3P	1/4"	£19.08



DESCRIPTION

ISO 5599/1 STANDARDS

The Series 9 electropneumatically or pneumatically operated valves have been manufactured in sizes 1, 2 and 3, as recommended by ISO Standards.

They are constructed to be actuated in different ways:

- Electrical actuation spring return
- Electrical actuation and pneumatic spring return
- Electrical actuation and return
- Pneumatic actuation and spring return
- Pneumatic actuation and differential pneumatic return
- Pneumatic actuation and return

For coils & plugs see pages 381 & 385-387



SOL / SPRING

5/2



2530

PART NUMBER	FUNCTION	ISO	PRICE
Z951-P15-23	5/2	1	£93.60
Z952-P15-23	5/2	2	£110.94
Z953-P15-23	5/2	3	£242.25



SOL / SOL

5/2



2530

PART NUMBER	FUNCTION	ISO	PRICE
Z951-P11-23	5/2	1	£130.08
Z952-P11-23	5/2	2	£145.67
Z953-P11-23	5/2	3	£258.12

5/3

Z961-P11-23	5/3 CC	1	£181.79
Z971-P11-23	5/3 CO	1	£181.79
Z962-P11-23	5/3 CC	2	£193.34
Z972-P11-23	5/3 CO	2	£193.34
Z963-P11-23	5/3 CC	3	£316.71
Z973-P11-23	5/3 CO	3	£316.71



2530

PNEU / SPRING

5/2

PART NUMBER	FUNCTION	ISO	PRICE
Z951-000-35	5/2	1	£60.88
Z952-000-35	5/2	2	£76.80
Z953-000-35	5/2	3	£181.74

PNEU / DIFF PNEU

5/2

PART NUMBER	FUNCTION	ISO	PRICE
Z951-000-34	5/2	1	£60.88
Z952-000-34	5/2	2	£78.62
Z953-000-34	5/2	3	£175.39

PNEU / PNEU

5/2

PART NUMBER	FUNCTION	ISO	PRICE
Z951-000-33	5/2	1	£60.88
Z952-000-33	5/2	2	£74.80
Z953-000-33	5/2	3	£175.39

5/3

Z961-000-33	5/3 CC	1	£90.23
Z971-000-33	5/3 CO	1	£90.23
Z962-000-33	5/3 CC	2	£111.98
Z972-000-33	5/3 CO	2	£111.98
Z963-000-33	5/3 CC	3	£224.07
Z973-000-33	5/3 CO	3	£216.90

SPECIFICATIONS

Type of construction	Spool (servo controlled)
Valve group	5/2 and 5/3-way port / position. Centre Closed (CC) or Centre Open (CO)
Materials	Aluminium body, stainless steel spool, NBR seals
Mounting	Threaded holes in sub-base
Sub-base sizes	1 = 1/4", 2 = 3/8" and 3 = 1/2"
Operating temperature	0°C to 60°C (with dry air -20°C)
Operating pressure	10 bar maximum
Nominal pressure	6 bar
Nominal flow	Size 1: 900 NI/min, Size 2: 1610 NI/min, Size 3: 3700 NI/min
Class of insulation	Class H
Protection class	IP54 DIN 40050 (IP65 with DIN 43650/PG9 connector)

SINGLE SUB-BASE WITH SIDE OUTLETS



2530

PART NUMBER	INLET / EXHAUST	SIZE	PRICE
Z901-F1A	1/4"	ISO 1	£22.63
Z902-F2A	3/8"	ISO 2	£28.29
Z903-F3A	1/2"	ISO 3	£60.48

SINGLE SUB-BASE WITH REAR OUTLETS



2530

PART NUMBER	INLET / EXHAUST	SIZE	PRICE
Z901-G1A	1/4"	ISO 1	£22.63
Z902-G2A	3/8"	ISO 2	£30.23
Z903-G3A	1/2"	ISO 3	£60.48

MANIFOLD SUB-BASE WITH COMMON EXHAUST & INLET



2530

PART NUMBER	INLET / EXHAUST	SIZE	PRICE
Z901-C1A	1/4"	ISO 1	£24.52
Z902-C2A	3/8"	ISO 2	£30.44
Z903-C3A	1/2"	ISO 3	£86.74

END BLOCK FOR MANIFOLD SUB-BASE



2530

PART NUMBER	INLET / EXHAUST	SIZE	PRICE
Z901-H1	1/4"	ISO 1	£28.89
Z902-H2	3/8"	ISO 2	£33.22
Z903-H3	1/2"	ISO 3	£88.71

END BLOCK WITH FRONT OUTLET



2530

PART NUMBER	INLET / EXHAUST	SIZE	PRICE
Z901-N1	1/4"	ISO 1	£39.44
Z902-N2	3/8"	ISO 2	£50.94
Z903-N3	1/2"	ISO 3	£72.50

MANIFOLD SUB-BASE WITH COMMON EXHAUST & INLET



2530

PART NUMBER	INLET / EXHAUST	SIZE	PRICE
Z901-N1A	1/4"	ISO 1	£34.01

END BLOCK FOR MANIFOLD BASES



2530

PART NUMBER	INLET / EXHAUST	SIZE	PRICE
Z901-HN1	1/4"	ISO 1	£57.83

SOLENOID MOD. U7... / U7*EX AND MOD. G7...

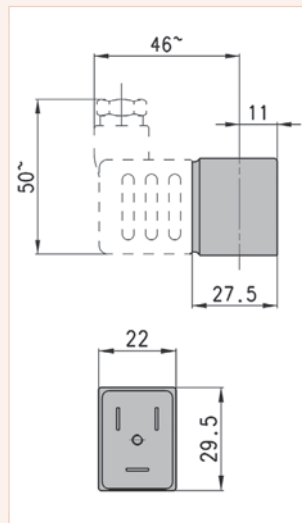
DESCRIPTION

The dimensions, as well as the power consumption of these solenoids, differ, so that the best possible choice can be made depending on the type of electronic or electromechanical operating system used.

SPECIFICATIONS

Connections	Bipolar plus earth DIN 43650 (vers. B) Mod. U7*EX marked II 3 GD Eex nA T4
Solenoid material	U7* = PET - G7* = PA

Mod.	Solenoid Voltage (1)	Power Absorption (1)	Solenoid Voltage (2)	Power Absorption (2)	Solenoid Voltage (3)	Power Absorption (3)
U7H	12 V DC	3.1 W	24 V – 50/60Hz	3.5 VA		
G7H	12 V DC	3.1 W	24 V – 50/60Hz	3.5 VA		
U7K	110 V – 50/60Hz	3.8 VA	125 V – 50/60Hz	5.5 VA	72 V DC	4.8 W
U7K1	110 V – 50/60Hz	3.8 VA	125 V – 50/60Hz	5.5 VA	72 V DC	4.8 W
G7K	110 V – 50/60Hz	3.8 VA	125 V – 50/60Hz	5.5 VA	72 V DC	4.8 W
G7K1	110 V – 50/60Hz	3.8 VA	125 V – 50/60Hz	5.5 VA	72 V DC	4.8 W
U7J	230 V – 50/60Hz	3.5 VA	240 V – 50/60Hz	4 VA		
G7J	230 V – 50/60Hz	3.5 VA	240 V – 50/60Hz	4 VA		
U79	48 V DC	3.1 W				
G79	48 V DC	3.1 W				
U710	110 V DC	3.2 W				
G710	110 V DC	3.2 W				
U77	24 V DC	3.1 W	48 V – 50/60Hz	3.5 VA		
U771	24 V DC	3.1 W	48 V – 50/60Hz	3.5 VA		
G77	24 V DC	3.1 W	48 V – 50/60Hz	3.5 VA		
G771	24 V DC	3.1 W	48 V – 50/60Hz	3.5 VA		
U7F	380 V – 50/60Hz	7 VA				
U72	12 V DC	5 W				
G72	12 V DC	5 W				
U73	24 V DC	5 W				
G73	24 V DC	5 W				



Seven

SOLENOIDS STANDARD DIN PLUG 18 MM Form A



2530

PART NUMBER	VOLTAGE	PRICE
ZA8B24	24 V 50/60Hz 5VA	£23.17
ZA8D110	110 V 50/60Hz 5VA	£23.17
ZA8E220	220 V 50/60Hz 5VA	£23.17
ZA8324	24 V DC 4W	£23.17

SOLENOIDS LATCHING COIL STANDARD PLUG



2530

PART NUMBER	VOLTAGE	PRICE
ZG9324	24 V DC	£51.89

SOLENOIDS – PET STANDARD DIN PLUG 11 MM



2530

PART NUMBER	VOLTAGE	PRICE
ZU7H	12 V DC 3.1W	£15.61
ZU7K	110 V AC 50/60Hz 5.5VA	£15.61
ZU7J	240 V AC 50/60Hz 4VA	£15.61
ZU79	48 V DC 3.1W	£15.61
ZU77	48 V 50/60Hz 3.5VA	£15.61
ZU72	12 V DC 5W	£15.61
ZU73	24 V DC 5W	£15.61
ZU74	48 V DC 5W	£15.61
ZU76	110 V DC 5W	£15.61

SOLENOIDS PRE-WIRED EXPLOSION PROOF



2530

PART NUMBER	VOLTAGE	PRICE
ZH8D110	110 V 50/60Hz 5.5VA	£139.22
ZH8E220	220 V 50/60Hz 5.5VA	£139.22
ZH8324	24 V DC 5.5W	£139.22

Size 10.2 mm

SOLENOIDS – NYLON STANDARD DIN PLUG 11 MM



2530

PART NUMBER	VOLTAGE	PRICE
ZG7H	12 V DC 3.1W	£13.47
ZG7K	110 V AC 50/60Hz 5.5VA	£13.47
ZG7J	240 V 50/60Hz 4VA	£13.47
ZG72	12 V DC 5W	£13.47
ZG73	24 V DC 5W	£13.47
ZG77	48 V 50/60Hz 3.5VA	£13.47

PLEASE NOTE:
DIN Plugs are
NOT included with
solenoid

Note: to order the ATEX version, add EX at the end of the code.

Mod. U7K1, G7K1, U771 and G771 are to be used only with solenoid valves Series A, NO in line.

DESCRIPTION

The range of Solenoid DIN Connectors, with cable gland entry, offers flexibility and is suitable for a wide variety of applications.

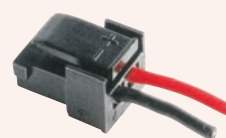
SPECIFICATIONS

Insulation group	VDE 0110 1/89 – Class C
Materials	Polyamide (glass fibre reinforced) connectors. NBR standard (form A and B) profile gasket. NBR standard (form C) flat gasket. M3 x 32 mm (form A and B), M3 x 28 mm (industrial form C), M2.5 x 28 mm (form C) screws
Voltage	Up to 250 V AC or DC unless otherwise stated
Current	10A (nominal) 16A (max) – Form A and B 6A (nominal) 10A (max) – Form C
Temperature range	-40°C to +90°C
Cable gland size	PG7 cable diameter 4 – 6 mm PG9 cable diameter 6 – 8 mm



INDUSTRIAL FORM B
11 MM PIN SPACING

2530



SOLENOID CONNECTORS

2530

PART NUMBER	TYPE (LED VOLTAGE AC/DC)	CABLE ENTRY	PRICE
ZKB2000B9	Black	PG9	£2.13
ZKB2V54T9	Transparent (24 V LED)	PG9	£11.10
ZKB2V55T9	Transparent (115 V LED)	PG9	£11.10
ZKB2V56T9	Transparent (230 V LED)	PG9	£11.52

For use with Series A, Series 3 and 4, and ISO valves

PART NUMBER	DESCRIPTION	PRICE
Z121-803	With 300 mm cable	£5.28
Z121-806	With 600 mm cable	£7.40
Z121-810	With 1000 mm cable	£9.77

For use with Series K and Series E valves (size 10.5 mm)



FORM A
18 MM PIN SPACING

2530

PART NUMBER	TYPE (LED VOLTAGE AC/DC)	CABLE ENTRY	PRICE
ZKA2000B9	Black	PG9	£2.13
ZKA2000A9	Grey	PG9	£1.81

For use with Series 4 valves - 1/2, Series 6 and A80 coils

DESCRIPTION

The range of Solenoid DIN moulded cable connectors offers a fast and efficient method of connection, resulting in reduced installation time and cost.

SPECIFICATIONS

Insulation group	VDE 0110 1/89 – Class C
Materials	TPU connectors. PVC standard cable. Integrated TPU gasket. M3 x 28 mm (form A and B), M3 x 23 mm (industrial form C), M2.5 x 23 mm (form C) screws
Voltage	Up to 250 V AC or DC unless otherwise stated
Current	5A – Form A and B 3A – Form C
Temperature range	-40°C to +90°C
Standard cable: Form A & B Form C	3 x 0.75 mm ² conductors PVC H05 VVF 3 x 0.50 mm ² conductors PVC H03 VVF



FORM A
18 MM PIN SPACING
DOUBLE EARTH



2530

PART NUMBER	TYPE (LED VOLTAGE AC/DC)	CABLE LENGTH	PRICE
ZMA11000530	Cable connector only	3 m	£9.97
ZMA61V54530	Cable connector (24 V LED)	3 m	£21.08

For use with Series 4 valves – 1/2, Series 6 and A80 coils



FORM B
11 MM PIN SPACING
12 O'CLOCK EARTH



2530

PART NUMBER	TYPE (LED VOLTAGE AC/DC)	CABLE LENGTH	PRICE
ZMB15000530	Cable connector only	3 m	£13.36
ZMB65V54530	Cable connector (24 V LED)	3 m	£21.08
ZMB65V55530	Cable connector (115 V LED)	3 m	£21.08
ZMB65V56530	Cable connector (230 V LED)	3 m	£21.08

For use with Series A, Series 3 and 4, and ISO valves



INDUSTRIAL FORM B
11 MM PIN SPACING
6 O'CLOCK EARTH



2530

PART NUMBER	TYPE (LED VOLTAGE AC/DC)	CABLE LENGTH	PRICE
ZMB63V55530	Cable connector (115 V LED)	3 m	£21.08

For use with Series A, Series 3 and 4, and ISO valves



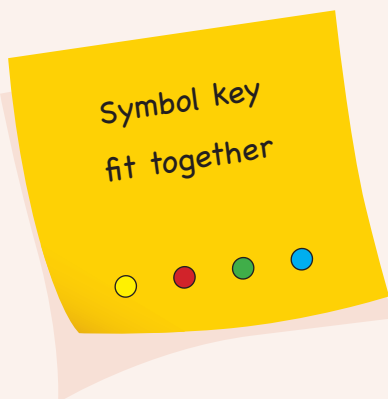
INDUSTRIAL FORM C
9.4 MM PIN SPACING
DOUBLE EARTH



2530

PART NUMBER	TYPE (LED VOLTAGE AC/DC)	CABLE LENGTH	PRICE
ZMD14000130	Cable connector only	3 m	£11.64

For use with Series EN and Series P valves



DESCRIPTION

The pneumatically operated Series 3 and Series 4 valves have been designed with three different methods of return. A pneumatic signal, mechanical spring or differential pneumatic return. This is due to the type of design consisting of a balanced spool, which means that it can be used for a wide range of applications.

SPECIFICATIONS

Type of construction	Spool (servo controlled)
Valve group	3/2, 5/2 and 5/3-way position. Centre Closed (CC) or Centre Open (CO)
Materials	Aluminium body, stainless steel spool, NBR seals
Mounting	Through holes in valve body
Ports	1/8", 1/4", 1/2"
Operating temperature	0°C to 80°C (with dry air -20°C)
Operating pressure	10 bar maximum
Nominal pressure	6 bar
Minimum pilot pressure	2 bar
Nominal flow	Series 3: 1/8" = 750 NI/min Series 4: 1/8" = 650 NI/min 1/4" = 1250 NI/min, 1/2" = 1900 NI/min
Nominal diameter	1/8" = 5 mm, 1/4" = 7.5 mm, 1/2" = 12 mm



PNEUMATIC / SPRING

3/2

2530

PART NUMBER	FUNCTION	PORT SIZE	PRICE
Z338-035	3/2	1/8"	£39.21
Z338L-035	3/2	1/8"	£39.21
Z438-035	3/2	1/8"	£50.17
Z434-035	3/2	1/4"	£69.81

L – Can be mounted on manifolds

5/2

Z358-035	5/2	1/8"	£41.48
Z458-035	5/2	1/8"	£55.67
Z454-035	5/2	1/4"	£74.04
Z452-035	5/2	1/2"	£199.38



PNEUMATIC / PNEUMATIC

3/2

2530

PART NUMBER	FUNCTION	PORT SIZE	PRICE
Z438-034	3/2	1/8"	£58.93
Z434-034	3/2	1/4"	£71.75

5/2

Z458-034	5/2	1/8"	£58.93
Z454-034	5/2	1/4"	£76.00
Z452-034	5/2	1/2"	£192.81



PNEUMATIC / PNEUMATIC

3/2

2530

PART NUMBER	FUNCTION	PORT SIZE	PRICE
Z338-033	3/2	1/8"	£43.58
Z338L-033	3/2	1/8"	£43.58
Z438-033	3/2	1/8"	£52.42
Z434-033	3/2	1/4"	£69.81

L – Can be mounted on manifolds

5/2

Z358-033	5/2	1/8"	£45.74
Z458-033	5/2	1/8"	£56.54
Z454-033	5/2	1/4"	£74.04
Z452-033	5/2	1/2"	£192.81

5/3

Z468-033	5/3 CC	1/8"	£94.97
Z464-033	5/3 CC	1/4"	£108.73
Z474-033	5/3 CO	1/4"	£108.73

You may also need ... CDC push-in fittings



... on pages 570 – 612, section 11

SPECIFICATIONS

Media	Filtered compressed air without lubricant. If lubricated air is used, it is recommended that ISO VG32 oil is used. Once applied, the lubrication should never be interrupted.
Materials	Aluminium valve body, NBR seals, OT58 brass poppet & plunger, stainless steel spools



PLUNGER
3/2

2530

PART NUMBER	FUNCTION	PORT SIZE	PRICE
Z235-945	3/2	M5	£18.27
Z234-945	3/2	4 mm	£22.20



ROLLER LEVER
3/2

2530

PART NUMBER	FUNCTION	PORT SIZE	PRICE
Z235-955	3/2	M5	£24.03
Z234-955	3/2	4 mm	£28.05

SPECIFICATIONS

Operating temperature	0°C to 80°C
Operating pressure	2 to 8 bar
Connections	4 mm, M5
Mounting	By through-holes in valve body



PANEL MOUNTED PLUNGER
3/2

2530

PART NUMBER	FUNCTION	PORT SIZE	PRICE
Z235-985	3/2	M5	£21.23
Z234-985	3/2	4 mm	£25.13



ONE WAY TRIP
3/2

2530

PART NUMBER	FUNCTION	PORT SIZE	PRICE
Z235-965	3/2	M5	£26.92
Z234-965	3/2	4 mm	£30.77

MECHANICALLY OPERATED VALVES – SERIES 1 AND 3

SPECIFICATIONS

Media	Filtered compressed air without lubricant. If lubricated air is used, it is recommended that ISO VG32 oil is used. Once applied, the lubrication should never be interrupted.
Materials	Aluminium valve body, NBR seals, OT58 brass poppet & plunger, stainless steel spools



PLUNGER
3/2

2530

PART NUMBER	FUNCTION	PORT SIZE	PRICE
Z338-945	3/2	1/8"	£25.12
Z138-945	3/2 NC	1/8"	£29.25
Z148-945	3/2 NO	1/8"	£34.30
Z134-945	3/2	1/4"	£48.15

5/2

Z358-945	5/2	1/8"	£30.64
Z158-945	5/2	1/8"	£53.15
Z154-945	5/2	1/4"	£89.10



ROLLER LEVER ONE WAY TRIP
3/2

2530

PART NUMBER	FUNCTION	PORT SIZE	PRICE
Z338-965	3/2	1/8"	£46.88
Z138-965	3/2	1/8"	£57.62

5/2

Z358-965	5/2	1/8"	£47.44
----------	-----	------	--------

SPECIFICATIONS

Operating temperature	0°C to +60°C
Operating pressure	0 to 10 bar
Connections	1/8", 1/4"
Mounting	By through-holes in valve body



ROLLER LEVER
3/2

2530

PART NUMBER	FUNCTION	PORT SIZE	PRICE
Z338-955	3/2	1/8"	£36.07
Z138-955	3/2	1/8"	£38.24
Z134-955	3/2	1/4"	£55.76

5/2

Z358-955	5/2	1/8"	£38.50
Z158-955	5/2	1/8"	£78.41
Z154-955	5/2	1/4"	£108.76

MECHANICALLY OPERATED SENSOR VALVES SERIES 3 AND 4

SPECIFICATIONS

Media	Filtered compressed air without lubricant. If lubricated air is used, it is recommended that ISO VG32 oil is used. Once applied, the lubrication should never be interrupted.
Materials	Aluminium valve body, NBR seals, OT58 brass poppet & plunger, stainless steel spools
Valve group	3/2, 5/2-way position. Normally Closed (NC) or Normally Open (NO)
Operating temperature	0°C to 80°C
Connections	1/8", 1/4"
Mounting	By through-holes in valve body



2530

LEVER

3/2

PART NUMBER	FUNCTION	PORT SIZE	PRICE
Z338-D159A5	3/2 NC	1/8"	£71.48

5/2

Z358-D159A5	5/2	1/8"	£75.33
-------------	-----	------	--------

MANUALLY OPERATED VALVES

DESCRIPTION

The manually operated, panel mounted valves, dia 22, have been designed to satisfy all the application requirements of the controls industry i.e. low actuating force 6N, short operational stroke and speed/accuracy of signal.

SPECIFICATIONS

Type of construction	Poppet (closed centres)
Valve group	3/2, 5/3-way position. Normally Closed (NC)
Materials	Aluminium body, OT58 brass plunger, NBR seals
Mounting	Panel
Ports	M5 or cartridge diameter 4
Operating temperature	0°C to 80°C (with dry air -20°C)
Operating pressure	2 to 8 bar
Nominal pressure	6 bar
Nominal flow	60 Nl/min
Nominal diameter	2.5 mm



PUSH BUTTON

3/2

2530

PART NUMBER	FUNCTION	PORT SIZE	PRICE
Z235-895	3/2 NC	M5	£35.28
Z234-895	3/2 NC	4 mm tube	£38.93



KEY LOCKABLE

3/2

2530

PART NUMBER	FUNCTION	PORT SIZE	PRICE
Z235-904	3/2 NC	M5	£60.21
Z234-904	3/2 NC	4 mm tube	£64.32



SELECTOR SWITCH

3/2 – 2-POSITION

2530

PART NUMBER	FUNCTION	PORT SIZE	PRICE
Z235-990	3/2 NC	M5	£46.13
Z234-990	3/2 NC	4 mm tube	£50.18



SELECTOR SWITCH

5/3 – 3-POSITION

2530

PART NUMBER	FUNCTION	PORT SIZE	PRICE
Z285-870	5/3	M5	£68.20
Z284-870	5/3	4 mm tube	£76.29



2530

PALM SWITCH
SPRING RETURN
3/2

PART NUMBER	FUNCTION	PORT SIZE	PRICE
Z235-975	3/2 NC	M5	£47.24
Z234-975	3/2 NC	4 mm tube	£51.28



2530

VALVE FOR USE
WITH OPERATORS
3/2

PART NUMBER	FUNCTION	PORT SIZE	PRICE
Z235-000	3/2 NC	M5	£22.11
Z234-000	3/2 NC	4 mm tube	£26.15
Z245-000	3/2 NO	M5	£25.00
Z244-000	3/2 NO	4 mm tube	£28.37



2530

PALM SWITCH
LATCHING - TWIST TO RELEASE
3/2

PART NUMBER	FUNCTION	PORT SIZE	PRICE
Z235-972	3/2 NC	M5	£51.90
Z234-972	3/2 NC	4 mm tube	£55.95



2530

BRACKET

PART NUMBER	DESCRIPTION	PRICE
Z210-000	Single	£1.69



2530

PALM SWITCH
STABLE
3/2

PART NUMBER	FUNCTION	PORT SIZE	PRICE
Z234-970	3/2 NC	4 mm tube	£52.11



2530

BRACKET

PART NUMBER	DESCRIPTION	PRICE
Z220-000	Double	£2.56



2530

JOYSTICK
3/2

PART NUMBER	FUNCTION	PORT SIZE	PRICE
Z235-905	3/2 NC	M5	£48.08
Z234-905	3/2 NC	4 mm tube	£52.11

DESCRIPTION

The Series 3 manual valves (1/8", 3/2 and 5/2-way) and the Series 4 manual valves (1/4", 3/2, 5/2 and 5/3-way) are available with actuators designed to satisfy different needs. The 3/2-way valves are normally closed when P is the inlet; they can also be normally open when R is the inlet.



SWITCH

3/2

2530

PART NUMBER	FUNCTION	PORT SIZE	PRICE
Z338-990	3/2 NC	1/8"	£41.48

5/2

Z358-990	5/2	1/8"	£45.74
----------	-----	------	--------



PUSH BUTTON

3/2

2530

PART NUMBER	FUNCTION	PORT SIZE	COLOUR	PRICE
Z338-895	3/2 NC	1/8"	Black	£34.79
Z338-896	3/2 NC	1/8"	Green	£34.79
Z338-897	3/2 NC	1/8"	Red	£34.79

5/2

Z358-895	5/2	1/8"	Black	£43.58
Z358-896	5/2	1/8"	Green	£43.58
Z358-897	5/2	1/8"	Red	£43.58



PALM SWITCH

3/2

2530

PART NUMBER	FUNCTION	PORT SIZE	COLOUR	PRICE
Z338-975	3/2 NC	1/8"	Black	£41.48
Z338-976	3/2 NC	1/8"	Green	£41.48
Z338-977	3/2 NC	1/8"	Red	£41.48

5/2

Z358-975	5/2	1/8"	Black	£48.18
Z358-976	5/2	1/8"	Green	£48.18
Z358-977	5/2	1/8"	Red	£48.18

SPECIFICATIONS

Type of construction	Spool type
Valve function	3/2, 5/2, 5/3-way position. Normally Closed (NC), Centre Closed (CC) or Centre Open (CO)
Materials	Aluminium body, stainless steel spool, NBR seals
Mounting	Through holes in valve body
Threaded ports	1/8", 1/4"
Operating temperature	0°C to 80°C (with dry air -20°C)
Operating pressure	0 to 10 bar
Nominal pressure	6 bar
Nominal flow	Series 3: 1/8" = 500 NI/min Series 4: 1/8" = 650 NI/min 1/4" = 1250 NI/min
Nominal diameter	1/8" = 5 mm 1/4" = 7.5 mm



PUSH / PULL

3/2

2530

PART NUMBER	FUNCTION	PORT SIZE	PRICE
Z338-910	3/2 NC	1/8"	£30.64
Z434-910	3/2 NC	1/4"	£60.07

5/2

Z358-910	5/2	1/8"	£34.79
Z454-910	5/2	1/4"	£64.94



PUSH AND SPRING RETURN

3/2

2530

PART NUMBER	FUNCTION	PORT SIZE	PRICE
Z338-915	3/2 NC	1/8"	£30.64
Z434-915	3/2 NC	1/4"	£60.07

5/2

Z358-915	5/2	1/8"	£34.79
Z454-915	5/2	1/4"	£64.94



LEVER

3/2

2530

PART NUMBER	FUNCTION	PORT SIZE	PRICE
Z138-900	3/2 NC	1/8"	£54.10
Z134-900	3/2 NC	1/4"	£73.34

5/2

Z158-900	5/2	1/8"	£103.51
Z154-900	5/2	1/4"	£125.94



LEVER

3/2

2530

PART NUMBER	FUNCTION	PORT SIZE	PRICE
Z138-935	3/2 NC	1/8"	£35.43
Z134-935	3/2 NC	1/4"	£54.67



LEVER

3/2

2530

PART NUMBER	FUNCTION	LEVER/SPRING	PORT SIZE	PRICE
Z338-900	3/2 NC	L/L	1/8"	£41.48
Z338-905	3/2 NC	L/S	1/8"	£43.30
Z434-900	3/2 NC	L/L	1/4"	£74.17
Z434-905	3/2 NC	L/S	1/4"	£74.17

5/2

Z358-900	5/2	L/L	1/8"	£48.18
Z358-905	5/2	L/S	1/8"	£50.17
Z454-900	5/2	L/L	1/4"	£82.33
Z454-905	5/2	L/S	1/4"	£82.33

5/3

Z368-900	5/3 CC	L/L/L	1/8"	£55.84
Z368-905	5/3 CC	L/S/L	1/8"	£62.54
Z378-900	5/3 CO	L/L/L	1/8"	£55.84
Z378-905	5/3 CO	L/S/L	1/8"	£62.54
Z464-900	5/3 CC	L/L/L	1/4"	£84.98
Z464-905	5/3 CC	L/S/L	1/4"	£84.98
Z474-900	5/3 CO	L/L/L	1/4"	£84.98
Z474-905	5/3 CO	L/S/L	1/4"	£84.98

FOOT OPERATED PEDAL VALVES

DESCRIPTION

The pedals can be supplied in either the pneumatic or electrical foot operated version. The pneumatic type is available with a 5/2 valve and 1/4" front ports, which allow the fittings and silencers to be assembled conveniently on the front face. A 3/2 operation can be obtained by closing an outlet port. The electrical type is available with a single pole changeover contact microswitch and a front wire outlet (PG9). The pedal can be operated as bi-stable or monostable, by switching the selector placed under the small red protection flap.

SPECIFICATIONS – PNEUMATICALLY OPERATED

Type of construction	Spool type
Valve function	5/2-way position
Materials	Valve body AL, stainless steel spool, NBR seals, plastic casing
Assembly	Valve built into pedal body
Operating temperature	0°C to 50°C (with dry air -10°C)
Operating pressure	2.5 to 8 bar
Rated flow	650 NI/min
Ports	1/4" gas



PNEUMATICALLY OPERATED FOOT VALVE

2530

PART NUMBER	FUNCTION	PRICE
Z354925	5/2	£82.17



FOOT OPERATED VALVE

2530

PART NUMBER	FUNCTION	PORT SIZE	PRICE
Z235-925	3/2 NC	M5	£70.62
Z234-925	3/2 NC	4 mm tube	£74.72

CIRCUIT SELECTOR

DESCRIPTION

The circuit selector, Mod. SCS-668-06, enables two signals coming alternately from two different points to be channelled towards the same point. The selector is mounted through holes in the body.



2530

SHUTTLE VALVE ZSCS SERIES

PART NUMBER	PORT SIZE	PRICE
ZSCS668-06	1/8"	£19.74

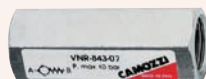
SPECIFICATIONS

Type of construction	Poppet type
Valve group	Automatic
Materials	AL body, OT58 bush, NBR seals, delrin poppet
Pressure	0.2 bar
Operating temperature	0°C to 80°C (with dry air -20°C)
Nominal flow	800 Nl/min
Fluid	Filtered air: without lubrication. If lubricated air is used, it is recommended that ISO VG32 oil is used. Once applied, the lubrication should never be interrupted

UNIDIRECTIONAL NONE RETURN VALVES

DESCRIPTION

The unidirectional valves in the VNR Series are available with M5, G1/8 and G1/4 ports. These poppet type valves allow operation at low pressures, both when there is a free flow and during retention.



2530

NON RETURN VALVES ZVNR SERIES

PART NUMBER	PORT SIZE	PRICE
ZVNR-205-M5	M5	£13.27
ZVNR210-1/8	1/8"	£11.77
ZVNR84307	1/4"	£20.06

SPECIFICATIONS

Type of construction	Poppet type
Valve group	Automatic
Materials	OT58 body, NBR seals, stainless steel spring
Pressure	M5 = 1 bar, 1/8" = 0.3 bar, 1/4" = 0.2 bar
Operating temperature	0°C to 80°C (with dry air -20°C)
Nominal flow	M5 = 150 Nl/min, 1/8" = 600 Nl/min, 1/4" = 1400 Nl/min
Fluid	Filtered air: without lubrication. If lubricated air is used, it is recommended that ISO VG32 oil is used. Once applied, the lubrication should never be interrupted

QUICK EXHAUST VALVES

DESCRIPTION

Quick exhaust valves are commonly used to increase the speed of cylinders or for rapid depressurisation of tanks containing compressed air. The models VSO 425 – M5 and VSO 426 – 04 are specially designed for mounting on solenoid valves and valves incorporating a Ø4 cartridge. We recommend mounting a silencer on the outlet.



2530

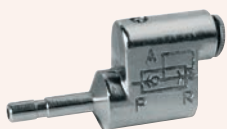
QUICK EXHAUST VALVES ZVS SERIES

PART NUMBER	PORT SIZE	PRICE
ZVSC588	1/8"	£11.89
ZVSC544	1/4"	£14.23
ZVSC522	1/2"	£22.32

SPECIFICATIONS

Type of construction	Poppet type
Valve group	Automatic
Materials	OT58 (brass) body. NBR seals ZVSO series. Desmopan seals ZVS series
Pressure	ZVS 1/8" 0.5 bar ZVS 1/4" 0.3 bar ZVS 1/2" 0.2 bar ZVSO 1 bar
Operating temperature	0°C to 80°C (with dry air -20°C)
Nominal flow	ZVS 1/8" P to A 650 Nl/min, A to R 1000 Nl/min ZVS 1/4" P to A 1100 Nl/min, A to R 1900 Nl/min ZVS 1/2" P to A 4500 Nl/min, A to R 6300 Nl/min ZVSO P to A = 50 Nl/min, A to R 100 Nl/min
Fluid	Filtered air: without lubrication. If lubricated air is used, it is recommended that ISO VG32 oil is used. Once applied the lubrication should never be interrupted

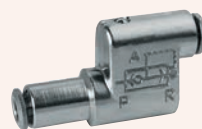
QUICK EXHAUST VALVES ZVSO SERIES



2530

PART NUMBER	SIZE	PRICE
ZVSO425-M5	M5	£9.94

QUICK EXHAUST VALVES ZVSO SERIES



2530

PART NUMBER	CARTRIDGE	PRICE
ZVSO426-04	Ø4 mm	£9.94

AUTOMATIC VALVES – FLOW CONTROL

DESCRIPTION

These unidirectional flow controllers are equipped with M5, 1/8" and 1/4" ports. They are mainly used for controlling the speed of cylinders and may be mounted on control panels or cylinders, as required. The 1/8" and 1/4" port versions are available with two different types of adjustments too.

SPECIFICATIONS

Type of construction	Needle type
Valve group	Uni and bidirectional controller
Materials	Aluminium body, brass needle, NBR seals
Mounting	By through holes in valve body / control panel
Ports	M5, 1/8", 1/4"
Operating temperature	0°C to 80°C (with dry air -20°C)
Nominal pressure	6 bar
Nominal diameter	M5 = 1.5 mm, 1/8" = 2 or 3 mm, 1/4" = 4 or 6 mm
Nominal flow	Ask for details



2530

FLOW CONTROL VALVE UNIDIRECTIONAL

PART NUMBER	PORT SIZE	NOMINAL DIA.	PRICE
ZRFU-452	M5	1.5 mm	£15.00
ZRFU-482	1/8"	2.0 mm	£13.56
ZRFU-483	1/8"	3.0 mm	£13.56
ZRFU-444	1/4"	4.0 mm	£22.32
ZRFU-446	1/4"	6.0 mm	£22.32
ZRFU-429	1/2"	9.0 mm	£69.17

BIDIRECTIONAL

ZRFO-352	M5	1.5 mm	£15.00
ZRFO-382	1/8"	2.0 mm	£13.56
ZRFO-383	1/8"	3.0 mm	£13.56
ZRFO-344	1/4"	4.0 mm	£22.32
ZRFO-346	1/4"	6.0 mm	£22.32



2530

SLIDE VALVE

PART NUMBER	PORT SIZE	PRICE
ZVMS-105	M5	£13.85
ZVMS-118	1/8"	£15.06
ZVMS-114	1/4"	£16.10
ZVMS-138	3/8"	£20.80
ZVMS-112	1/2"	£25.64
ZVMS-134	3/4"	£34.43

AUTOMATIC VALVES – BLOCKING

DESCRIPTION

These unidirectional and bidirectional blocking valves enable direct mounting onto cylinders. The internal design of the blocking valves allows a very high flow rate and reliable operation.

SPECIFICATIONS

Type of construction	Poppet type
Valve group	Uni and bidirectional blocking valve
Materials	OT58 body, NBR seals
Mounting	By male thread
Ports	1/8", 1/4"
Operating temperature	0°C to 80°C (with dry air -20°C)
Operating pressure	VBU = 0.3 to 10 bar, VBO = 0 to 10 bar
Nominal pressure	6 bar
Nominal diameter	1/8" = 5.5 mm, 1/4" = 8 mm
Nominal flow	Ask for details



2530

BLOCKING VALVES UNIDIRECTIONAL

PART NUMBER	PORT SIZE	PRICE
ZVBU-1/8	1/8"	£40.71
ZVBU-1/4	1/4"	£44.77
ZVBU-3/8	3/8"	£56.77

BIDIRECTIONAL

ZVBO-1/8	1/8"	£40.71
ZVBO-1/4	1/4"	£44.77
ZVBO-3/8	3/8"	£56.77

COUPLINGS

SERIES 5000 HOSE BARB



2510

PART NUMBER	CONNECTION	PRICE
Z505606	6 mm	£7.29
Z505609	9 mm	£7.29

SERIES 5000 MALE THREAD



2510

PART NUMBER	CONNECTION	PRICE
Z5051-18	1/8" BSPP	£7.05
Z5051-14	1/4" BSPP	£7.05

SERIES 5000 FEMALE THREAD



2510

PART NUMBER	CONNECTION	PRICE
Z50531/8	1/8" BSPP	£7.52
Z50531/4	1/4" BSPP	£7.52

SERIES 5000 PUSH-IN TUBE FITTINGS



2510

PART NUMBER	CONNECTION	PRICE
Z50546/4	6 mm x 4 mm	£7.40
Z50548/6	8 mm x 6 mm	£7.40

SERIES 5000 BULKHEAD FITTINGS



2510

PART NUMBER	CONNECTION	PRICE
Z50521/8	1/8" BSPP	£9.72
Z50521/4	1/4" BSPP	£9.72

SERIES 5000 BULKHEAD TUBE FITTINGS



2510

PART NUMBER	CONNECTION	PRICE
Z50556/4	6 mm x 4 mm	£9.83
Z50558/6	8 mm x 6 mm	£9.83

SERIES 5000 FEMALE HOSE



2510

PART NUMBER	CONNECTION	PRICE
Z50576/14	6 mm x 14 mm	£10.71

SERIES 5000 ANTI-KINK TUBE NUT



2510

PART NUMBER	CONNECTION	PRICE
Z50586/4	6 mm x 4 mm	£8.71
Z50588/6	8 mm x 6 mm	£8.71

FEATURES / BENEFITS

- Compact, space saving
- Lightweight, easy to handle

SPECIFICATIONS

Nominal flow diameter	5.0 mm (3/16")
Flow capacity	550 l/min (19.4 CFM)
Max. working pressure	12 bar (175 psi)
Temperature range	0°C to 80°C (+32°F to +176°F)
Temperature range – for dry air	-20°C to +80°C (-4°F to +176°F)
Coupling material	Nickel plated brass OT58
Nipple material	Nickel plated brass OT58
Valve	Brass
Seal	Nitrile

NIPPLES

SERIES 5000 HOSE BARB



2510

PART NUMBER	CONNECTION	PRICE
Z565006	6 mm	£1.27
Z565009	9 mm	£1.27

SERIES 5000 MALE THREAD



2510

PART NUMBER	CONNECTION	PRICE
Z51501/8	1/8" BSPP	£1.30
Z51501/4	1/4" BSPP	£1.30

SERIES 5000 FEMALE THREAD



2510

PART NUMBER	CONNECTION	PRICE
Z53501/8	1/8" BSPP	£1.54
Z53501/4	1/4" BSPP	£1.54

SERIES 5000 PUSH-IN TUBE FITTINGS



2510

PART NUMBER	CONNECTION	PRICE
Z54506/4	6 mm x 4 mm	£1.82
Z54508/6	8 mm x 6 mm	£1.82

SERIES 5000 FEMALE HOSE



2510

PART NUMBER	CONNECTION	PRICE
Z57506/14	6 mm x 14 mm	£3.73

SERIES 5000 ANTI-KINK TUBE NUT



2510

PART NUMBER	CONNECTION	PRICE
Z58506/4	6 mm x 4 mm	£3.22
Z58508/6	8 mm x 6 mm	£3.22

FEATURES / BENEFITS

Sprint pipe fittings are characterised by great reliability of female threads, both BSPP and BSPT, with non-flat surfaces. The patented Sprint models are provided with a particular torque system, which avoids the use of liquid glues or PTFE band, thus making the mounting quicker.

SPECIFICATIONS

Operating pressure	Dependent on tube / installation
Operating temperature	Dependent on tube specification
Materials	Bright nickel plated brass
Sealing ring	PTFE
Tube to connect	Nylon 6, 11, 12, polyurethane and polyethylene
Media	Compressed air and any fluids compatible with material specs



**ELBOW
BSPT MALE**

3520

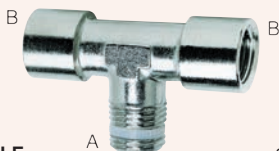
PART NUMBER	MALE THREAD	PRICE
ZS20101/8	1/8" BSPT	£2.02
ZS20101/4	1/4" BSPT	£2.90
ZS20103/8	3/8" BSPT	£3.81
ZS20101/2	1/2" BSPT	£5.47



**ELBOW
BSPT MALE / BSPP FEMALE**

3520

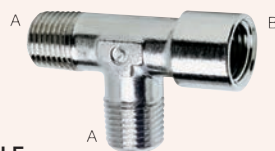
PART NUMBER	MALE (A)	FEMALE (B)	PRICE
ZS20201/8	1/8" BSPT	1/8" BSPP	£2.09
ZS20201/4	1/4" BSPT	1/4" BSPP	£2.90
ZS20203/8	3/8" BSPT	3/8" BSPP	£3.85
ZS20201/2	1/2" BSPT	1/2" BSPP	£5.79



**CENTRE LEG TEE
BSPT MALE / BSPP FEMALE**

3520

PART NUMBER	MALE (A)	FEMALE (B)	PRICE
ZS20601/8	1/8" BSPT	1/8" BSPP	£2.74
ZS20601/4	1/4" BSPT	1/4" BSPP	£4.30
ZS20603/8	3/8" BSPT	3/8" BSPP	£6.01
ZS20601/2	1/2" BSPT	1/2" BSPP	£8.41



**TEE
BSPT MALE / BSPP FEMALE**

3520

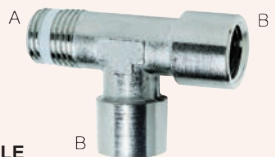
PART NUMBER	MALE (A)	FEMALE (B)	PRICE
ZS20501/8	1/8" BSPT	1/8" BSPP	£2.74
ZS20501/4	1/4" BSPT	1/4" BSPP	£4.18
ZS20503/8	3/8" BSPT	3/8" BSPP	£6.01
ZS20501/2	1/2" BSPT	1/2" BSPP	£8.41



**EQUAL TEE
BSPT MALE**

3520

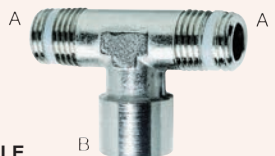
PART NUMBER	MALE THREAD	PRICE
ZS20801/8	1/8" BSPT	£2.74
ZS20801/4	1/4" BSPT	£4.30
ZS20803/8	3/8" BSPT	£6.01
ZS20801/2	1/2" BSPT	£8.41



**OFF SET TEE
BSPT MALE / BSPP FEMALE**

3520

PART NUMBER	MALE (A)	FEMALE (B)	PRICE
ZS20701/8	1/8" BSPT	1/8" BSPP	£2.74
ZS20701/4	1/4" BSPT	1/4" BSPP	£4.30
ZS20703/8	3/8" BSPT	3/8" BSPP	£6.01
ZS20701/2	1/2" BSPT	1/2" BSPP	£8.41



**CENTRE LEG TEE
BSPT MALE / BSPP FEMALE**

3520

PART NUMBER	MALE (A)	FEMALE (B)	PRICE
ZS20901/8	1/8" BSPT	1/8" BSPP	£2.74
ZS20901/4	1/4" BSPT	1/4" BSPP	£4.30
ZS20903/8	3/8" BSPT	3/8" BSPP	£6.01
ZS20901/2	1/2" BSPT	1/2" BSPP	£8.41



EQUAL CONNECTOR
BSPT MALE

3520

PART NUMBER	MALE THREAD	PRICE
ZS25001/8	1/8" BSPT	£0.85
ZS25001/4	1/4" BSPT	£1.20
ZS25003/8	3/8" BSPT	£1.72
ZS25001/2	1/2" BSPT	£2.68



REDUCING CONNECTOR
BSPT MALE / BSPT MALE

3520

PART NUMBER	MALE (A)	MALE (B)	PRICE
ZS25101/814	1/8" BSPT	1/4" BSPT	£1.24
ZS25101/838	1/8" BSPT	3/8" BSPT	£1.64
ZS25101/438	1/4" BSPT	3/8" BSPT	£1.72
ZS25101/412	1/4" BSPT	1/2" BSPT	£2.74
ZS25103/812	3/8" BSPT	1/2" BSPT	£2.74



REDUCING EXTENDED CONNECTOR
BSPT MALE / BSPP FEMALE

3520

PART NUMBER	MALE (A)	FEMALE (B)	PRICE
ZS25201/818	1/8" BSPT	1/8" BSPP	£1.08
ZS25201/814	1/8" BSPT	1/4" BSPP	£1.28
ZS25201/838	1/8" BSPT	3/8" BSPP	£2.58
ZS25201/414	1/4" BSPT	1/4" BSPP	£1.44
ZS25201/438	1/4" BSPT	3/8" BSPP	£2.29
ZS25201/412	1/4" BSPT	1/2" BSPP	£3.55
ZS25203/838	3/8" BSPT	3/8" BSPP	£2.41
ZS25203/812	3/8" BSPT	1/2" BSPP	£3.55
ZS25201/212	1/2" BSPT	1/2" BSPP	£3.85



REDUCING BUSH
BSPT MALE / BSPP FEMALE

3520

PART NUMBER	MALE (A)	FEMALE (B)	PRICE
ZS25301/418	1/4" BSPT	1/8" BSPP	£0.97
ZS25303/818	3/8" BSPT	1/8" BSPP	£1.28
ZS25303/814	3/8" BSPT	1/4" BSPP	£1.28
ZS25301/218	1/2" BSPT	1/8" BSPP	£2.39
ZS25301/214	1/2" BSPT	1/4" BSPP	£2.29
ZS25301/238	1/2" BSPT	3/8" BSPP	£2.29



PLUG
BSPP MALE

3520

PART NUMBER	MALE THREAD	PRICE
ZS26101/8	1/8" BSPP	£1.21
ZS26101/4	1/4" BSPP	£1.45
ZS26103/8	3/8" BSPP	£1.68
ZS26101/2	1/2" BSPP	£2.68



PLUG - FLUSH FITTING
BSPP MALE

3520

PART NUMBER	MALE THREAD	PRICE
ZS26151/8	1/8" BSPP	£1.21
ZS26151/4	1/4" BSPP	£1.45
ZS26153/8	3/8" BSPP	£1.68



SWIVEL CONNECTOR
BSPT MALE / BSPP FEMALE

3520

PART NUMBER	MALE (A)	FEMALE (B)	PRICE
ZS2541-1818	1/8" BSPT	1/8" BSPP	£2.12
ZS2541-1414	1/4" BSPT	1/4" BSPP	£2.68
ZS2541-3838	3/8" BSPT	3/8" BSPP	£4.42

You may also need ...

Tubing, hose and ducting

- PVC tubing & hose
- Nylon tubing
- Nylon recoils
- Polyurethane tube
- Polyurethane recoils



... on pages 496 – 567, section 10

DESCRIPTION

Series 2000 pipe fittings are available in a wide range of styles and sizes.

SPECIFICATIONS

Maximum pressure	40 bar
Threads	GAS conical ISO 7 (BSPT) GAS cylindrical ISO 228 (BSP)
Fluid	Compressed air or other low pressure fluids
Temperature	-40°C to +120°C
Materials	Nickel plated brass body



EQUAL CONNECTOR
BSPT MALE

3520

PART NUMBER	MALE THREAD	PRICE
Z25001/8	1/8" BSPT	£0.76
Z25001/4	1/4" BSPT	£1.09
Z25003/8	3/8" BSPT	£1.58
Z25001/2	1/2" BSPT	£2.45
Z25003/4	3/4" BSPT	£4.15
Z25001	1" BSPT	£14.90



EQUAL CONNECTOR
BSPP MALE

3520

PART NUMBER	MALE THREAD	PRICE
Z2501M5	M5	£0.76
Z25011/8	1/8" BSPP	£0.91
Z25011/4	1/4" BSPP	£1.28
Z25013/8	3/8" BSPP	£1.60
Z25011/2	1/2" BSPP	£2.63



REDUCING CONNECTOR
BSPT MALE / BSPT MALE

3520

PART NUMBER	MALE (A)	MALE (B)	PRICE
Z25101/814	1/8" BSPT	1/4" BSPT	£1.12
Z25101/838	1/8" BSPT	3/8" BSPT	£1.52
Z25101/438	1/4" BSPT	3/8" BSPT	£1.58
Z25101/412	1/4" BSPT	1/2" BSPT	£2.52
Z25103/812	3/8" BSPT	1/2" BSPT	£2.52
Z25101/234	1/2" BSPT	3/4" BSPT	£3.85



REDUCING EXTENDED CONNECTOR
BSPT MALE / BSPP FEMALE

3520

PART NUMBER	MALE (A)	FEMALE (B)	PRICE
Z25201/818	1/8" BSPT	1/8" BSPP	£0.94
Z25201/814	1/8" BSPT	1/4" BSPP	£1.18
Z25201/838	1/8" BSPT	3/8" BSPP	£2.30
Z25201/414	1/4" BSPT	1/4" BSPP	£1.28
Z25201/438	1/4" BSPT	3/8" BSPP	£2.09
Z25201/412	1/4" BSPT	1/2" BSPP	£3.24
Z25203/838	3/8" BSPT	3/8" BSPP	£2.14
Z25203/812	3/8" BSPT	1/2" BSPP	£3.24
Z25201/212	1/2" BSPT	1/2" BSPP	£3.52



REDUCING EXTENDED CONNECTOR
BSPP MALE / BSPP FEMALE

3520

PART NUMBER	MALE (A)	FEMALE (B)	PRICE
Z2521M518	M5	1/8" BSPP	£1.02
Z25211/818	1/8" BSPP	1/8" BSPP	£0.94
Z25211/814	1/8" BSPP	1/4" BSPP	£1.25
Z25211/838	1/8" BSPP	3/8" BSPP	£2.52
Z25211/414	1/4" BSPP	1/4" BSPP	£1.41
Z25211/438	1/4" BSPP	3/8" BSPP	£2.14
Z25211/412	1/4" BSPP	1/2" BSPP	£3.24
Z25213/838	3/8" BSPP	3/8" BSPP	£2.30
Z25213/812	3/8" BSPP	1/2" BSPP	£3.42
Z25211/212	1/2" BSPP	1/2" BSPP	£3.70



REDUCING CONNECTOR
BSPP MALE / BSPP MALE

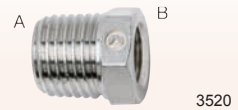
3520

PART NUMBER	MALE (A)	MALE (B)	PRICE
Z2511M51/8	M5	1/8" BSPP	£1.02
Z25111/814	1/8" BSPP	1/4" BSPP	£1.12
Z25111/838	1/8" BSPP	3/8" BSPP	£1.54
Z25111/438	1/4" BSPP	3/8" BSPP	£1.52
Z25111/412	1/4" BSPP	1/2" BSPP	£2.56
Z25113/812	3/8" BSPP	1/2" BSPP	£2.56



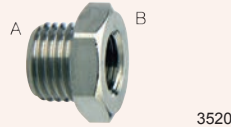
**EQUAL CONNECTOR
EXTENDED
BSPP MALE / BSPP FEMALE**

PART NUMBER	MALE (A)	FEMALE (B)	LENGTH	PRICE
Z25251/816	1/8" BSPP	1/8" BSPP	16 mm	£1.28
Z25251/836	1/8" BSPP	1/8" BSPP	36 mm	£2.10
Z25251/427	1/4" BSPP	1/4" BSPP	27 mm	£2.12
Z25251/443	1/4" BSPP	1/4" BSPP	43 mm	£2.77



**REDUCING BUSH
BSPT MALE / BSPP FEMALE**

PART NUMBER	MALE (A)	FEMALE (B)	PRICE
Z25301/418	1/4" BSPT	1/8" BSPP	£0.90
Z25303/818	3/8" BSPT	1/8" BSPP	£1.18
Z25303/814	3/8" BSPT	1/4" BSPP	£1.18
Z25301/218	1/2" BSPT	1/8" BSPP	£2.12
Z25301/214	1/2" BSPT	1/4" BSPP	£2.09
Z25301/238	1/2" BSPT	3/8" BSPP	£2.09
Z25303/438	3/4" BSPT	3/8" BSPP	£7.47
Z25303/412	3/4" BSPT	1/2" BSPP	£2.89
Z2530112	1" BSPT	1/2" BSPP	£10.79



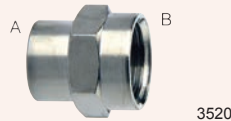
**REDUCING BUSH
BSPP MALE / BSPP FEMALE**

PART NUMBER	MALE (A)	FEMALE (B)	PRICE
Z25311/8M5	1/8" BSPP	M5	£0.91
Z25311/418	1/4" BSPP	1/8" BSPP	£0.94
Z25313/818	3/8" BSPP	1/8" BSPP	£1.18
Z25313/814	3/8" BSPP	1/4" BSPP	£1.18
Z25311/218	1/2" BSPP	1/8" BSPP	£2.52
Z25311/214	1/2" BSPP	1/4" BSPP	£2.12
Z25311/238	1/2" BSPP	3/8" BSPP	£2.12



**EQUAL CONNECTOR
BSPP FEMALE**

PART NUMBER	FEMALE THREAD	PRICE
Z2543M5	M5	£0.76
Z2543-1/8	1/8" BSPP	£0.90
Z2543-1/4	1/4" BSPP	£1.28
Z25433/8	3/8" BSPP	£2.52



**REDUCING CONNECTOR
BSPP FEMALE / BSPP FEMALE**

PART NUMBER	FEMALE (A)	FEMALE (B)	PRICE
Z2553M51/8	M5	1/8" BSPP	£1.09
Z25531/814	1/8" BSPP	1/4" BSPP	£1.25
Z25531/838	1/8" BSPP	3/8" BSPP	£2.30
Z25531/812	1/8" BSPP	1/2" BSPP	£3.24
Z25531/438	1/4" BSPP	3/8" BSPP	£2.45
Z25531/412	1/4" BSPP	1/2" BSPP	£3.42
Z25533/812	3/8" BSPP	1/2" BSPP	£3.52



**BLANKING PLUG
BSPP MALE**

PART NUMBER	MALE	LENGTH	PRICE
Z2611M5	M5	7.5 mm	£0.62
Z26111/8	1/8" BSPP	10.5 mm	£0.76
Z26111/4	1/4" BSPP	13.0 mm	£1.02
Z26113/8	3/8" BSPP	14.0 mm	£1.28
Z26111/2	1/2" BSPP	15.5 mm	£2.15
Z26111	1" BSPP	19.0 mm	£6.76



**BLANKING CAP
BSPP FEMALE**

PART NUMBER	FEMALE	LENGTH	PRICE
Z26131/8	1/8" BSPP	11.0 mm	£0.76
Z26131/4	1/4" BSPP	13.5 mm	£1.12
Z26133/8	3/8" BSPP	15.5 mm	£1.60
Z26131/2	1/2" BSPP	22.5 mm	£2.63



**BLANKING PLUG
BSPT MALE**

PART NUMBER	MALE	LENGTH	PRICE
Z26103/4	3/4" BSPT	16.5 mm	£3.46



**EQUAL ELBOW
BSPP FEMALE**

PART NUMBER	FEMALE THREAD	PRICE
Z20131/8	1/8" BSPP	£2.12
Z20131/4	1/4" BSPP	£3.06
Z20133/8	3/8" BSPP	£3.85
Z20131/2	1/2" BSPP	£6.85

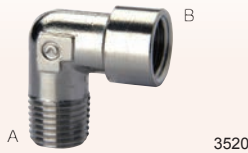


**EQUAL ELBOW
BSPT MALE**

PART NUMBER	MALE THREAD	PRICE
Z20101/8	1/8" BSPT	£1.79
Z20101/4	1/4" BSPT	£2.63
Z20103/8	3/8" BSPT	£3.46
Z20101/2	1/2" BSPT	£4.96
Z20103/4	3/4" BSPT	£15.67
Z20101	1" BSPT	£25.05

ELBOW

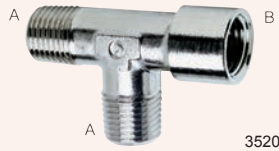
BSPT MALE / BSPP FEMALE



PART NUMBER	MALE (A)	FEMALE (B)	PRICE
Z2020M5	M5	M5	£2.05
Z20201/8	1/8" BSPT	1/8" BSPP	£1.90
Z20201/4	1/4" BSPT	1/4" BSPP	£2.63
Z20203/8	3/8" BSPT	3/8" BSPP	£3.52
Z20201/2	1/2" BSPT	1/2" BSPP	£5.24
Z20203/4	3/4" BSPT	3/4" BSPP	£19.15
Z20201	1" BSPT	1" BSPP	£31.69

TEE

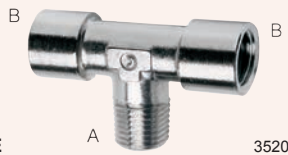
BSPT MALE / BSPP FEMALE



PART NUMBER	MALE (A)	FEMALE (B)	PRICE
Z20501/8	1/8" BSPT	1/8" BSPP	£2.52
Z20501/4	1/4" BSPT	1/4" BSPP	£3.80
Z20503/8	3/8" BSPT	3/8" BSPP	£5.47
Z20501/2	1/2" BSPT	1/2" BSPP	£7.63

CENTRE LEG TEE

BSPT MALE / BSPP FEMALE



PART NUMBER	MALE (A)	FEMALE (B)	PRICE
Z20601/8	1/8" BSPT	1/8" BSPP	£2.52
Z20601/4	1/4" BSPT	1/4" BSPP	£3.85
Z20603/8	3/8" BSPT	3/8" BSPP	£5.47
Z20601/2	1/2" BSPT	1/2" BSPP	£7.63

OFF SET TEE

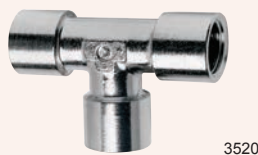
BSPT MALE / BSPP FEMALE



PART NUMBER	MALE (A)	FEMALE (B)	PRICE
Z20701/8	1/8" BSPT	1/8" BSPP	£2.52
Z20701/4	1/4" BSPT	1/4" BSPP	£3.85
Z20703/8	3/8" BSPT	3/8" BSPP	£5.47
Z20701/2	1/2" BSPT	1/2" BSPP	£7.63

EQUAL TEE

BSPP FEMALE



PART NUMBER	FEMALE THREAD	PRICE
Z20031/8	1/8" BSPP	£2.52
Z20031/4	1/4" BSPP	£3.82
Z20033/8	3/8" BSPP	£5.56
Z20031/2	1/2" BSPP	£7.85

HOSETAILE

BSPP MALE



PART NUMBER	TUBE ID	MALE	PRICE
Z26012M5	2 mm	M5	£1.21
Z26014.5M5	4 mm	M5	£0.94
Z260171/8	7 mm	1/8" BSPP	£1.02
Z260171/4	7 mm	1/4" BSPP	£1.41
Z260181/8	8 mm	1/8" BSPP	£1.02
Z260191/8	9 mm	1/8" BSPP	£1.02
Z260191/4	9 mm	1/4" BSPP	£1.41
Z260193/8	9 mm	3/8" BSPP	£1.69
Z2601121/4	12 mm	1/4" BSPP	£1.54
Z2601123/8	12 mm	3/8" BSPP	£1.69
Z2601121/2	12 mm	1/2" BSPP	£2.92
Z2601173/8	17 mm	3/8" BSPP	£2.14
Z2601171/2	17 mm	1/2" BSPP	£3.09

EQUAL TEE

BSPT MALE



PART NUMBER	MALE THREAD	PRICE
Z20801/8	1/8" BSPT	£2.52
Z20801/4	1/4" BSPT	£3.85
Z20803/8	3/8" BSPT	£5.47
Z20801/2	1/2" BSPT	£7.63
Z20803/4	3/4" BSPT	£20.39
Z20801	1" BSPT	£29.51

CENTRE LEG TEE

BSPT MALE / BSPP FEMALE



PART NUMBER	MALE (A)	FEMALE (B)	PRICE
Z20901/8	1/8" BSPT	1/8" BSPP	£2.52
Z20901/4	1/4" BSPT	1/4" BSPP	£3.85
Z20903/8	3/8" BSPT	3/8" BSPP	£5.47
Z20901/2	1/2" BSPT	1/2" BSPP	£7.63
Z20903/4	3/4" BSPT	3/4" BSPP	£19.69
Z20901	1" BSPT	1" BSPP	£31.11

EQUAL CROSS

BSPP FEMALE



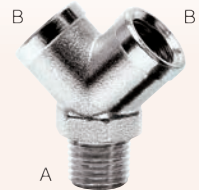
PART NUMBER	FEMALE THREAD	PRICE
Z20331/8	1/8" BSPP	£4.37
Z20331/4	1/4" BSPP	£5.51
Z20333/8	3/8" BSPP	£7.09



**EQUAL 2-WAY 'Y' PIECE
BSPP FEMALE**

3520

PART NUMBER	FEMALE THREAD	PRICE
Z20431/8	1/8" BSPP	£4.37
Z20431/4	1/4" BSPP	£4.76
Z20433/8	3/8" BSPP	£6.77
Z20431/2	1/2" BSPP	£9.27



**EQUAL 2-WAY 'Y' PIECE
BSPT MALE / BSPP FEMALE**

3520

PART NUMBER	MALE (A)	FEMALE (B)	PRICE
Z20401/8	1/8" BSPT	1/8" BSPP	£4.37
Z20401/4	1/4" BSPT	1/4" BSPP	£4.76
Z20403/8	3/8" BSPT	3/8" BSPP	£6.77
Z20401/2	1/2" BSPT	1/2" BSPP	£9.19



**SINGLE BANJO CONNECTOR
BSPP FEMALE**

3520

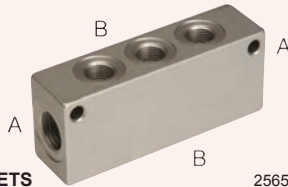
PART NUMBER	TUBE OD	FEMALE	PRICE
Z2023M5M5	10.5 mm	M5	£1.79
Z2023M6	10.5 mm	M6	£1.69
Z20231/8	20.0 mm	1/8" BSPP	£2.06
Z20231/4	23.5 mm	1/4" BSPP	£2.63
Z20233/8	23.5 mm	3/8" BSPP	£3.52



**DISTRIBUTION BLOCK
BSPP FEMALE**

2565

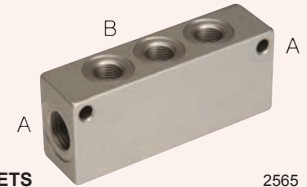
PART NUMBER	FEMALE THREAD	PRICE
Z30331/8	1/8" BSPP	£4.46
Z30331/4	1/4" BSPP	£7.55
Z30333/8	3/8" BSPP	£11.23
Z30331/2	1/2" BSPP	£13.80



**PNEUMATIC MANIFOLD
WITH DOUBLE SIDED OUTLETS**

2565

PART NUMBER	FEMALE (A)	OUTLETS	FEMALE (B)	PRICE
Z3043-14318	1/4"	3	1/8"	£15.18
Z3043-14418	1/4"	4	1/8"	£19.26
Z3043-14518	1/4"	5	1/8"	£23.53
Z3043-14618	1/4"	6	1/8"	£27.81
Z3043-38314	3/8"	3	1/4"	£18.29
Z3043-38414	3/8"	4	1/4"	£23.32
Z3043-38514	3/8"	5	1/4"	£28.05
Z3043-38614	3/8"	6	1/4"	£34.68
Z3043-12338	1/2"	3	3/8"	£31.43
Z3043-12438	1/2"	4	3/8"	£37.98
Z3043-12538	1/2"	5	3/8"	£44.37
Z3043-12638	1/2"	6	3/8"	£48.60



**PNEUMATIC MANIFOLD
WITH SINGLE SIDED OUTLETS**

2565

PART NUMBER	FEMALE (A)	OUTLETS	FEMALE (B)	PRICE
Z3053-14318	1/4"	3	1/8"	£14.48
Z3053-14418	1/4"	4	1/8"	£15.18
Z3053-14518	1/4"	5	1/8"	£17.86
Z3053-14618	1/4"	6	1/8"	£20.37
Z3053-38314	3/8"	3	1/4"	£14.94
Z3053-38414	3/8"	4	1/4"	£18.64
Z3053-38514	3/8"	5	1/4"	£21.48
Z3053-38614	3/8"	6	1/4"	£24.50
Z3053-12338	1/2"	3	3/8"	£26.71
Z3053-12438	1/2"	4	3/8"	£28.81
Z3053-12538	1/2"	5	3/8"	£33.60
Z3053-12638	1/2"	6	3/8"	£36.56

DESCRIPTION

Unidirectional and bidirectional banjo flow controllers with M5, 1/8", 1/4", 3/8" and 1/2" connections.

* Supplied complete with 1/2" BSP female banjo

SPECIFICATIONS

Materials	Nickel plated brass body, NBR seals, brass bush, stainless steel spring
Operating temperature	0°C to 80°C (with dry air -20°C to +80°C)
Connections	M5, 1/8", 1/4", 3/8", 1/2"

CYLINDER MOUNT SCREWDRIVER TYPE UNIDIRECTIONAL



2530

PART NUMBER	PORT SIZE	PRICE
ZSCU602-M5	M5	£14.72
ZSCU604-18	1/8"	£10.58
ZSCU606-14	1/4"	£11.70
ZSCU608-38	3/8"	£24.12
ZSCU610-12*	1/2"	£63.15

CYLINDER MOUNT SCREWDRIVER TYPE BIDIRECTIONAL



2530

PART NUMBER	PORT SIZE	PRICE
ZSCO602-M5	M5	£11.06
ZSCO604-18	1/8"	£7.85
ZSCO606-14	1/4"	£8.92
ZSCO610-12*	1/2"	£58.04

CYLINDER MOUNT MANUAL TYPE UNIDIRECTIONAL



2530

PART NUMBER	PORT SIZE	PRICE
ZMCU702-M5	M5	£16.25
ZMCU704-18	1/8"	£11.70
ZMCU706-14	1/4"	£13.16
ZMCU708-38	3/8"	£27.00
ZMCU710-12*	1/2"	£63.15

CYLINDER MOUNT MANUAL TYPE BIDIRECTIONAL



2530

PART NUMBER	PORT SIZE	PRICE
ZMCO702-M5	M5	£12.33
ZMCO704-18	1/8"	£9.38
ZMCO706-14	1/4"	£10.13
ZMCO710-12*	1/2"	£58.04

VALVE MOUNT SCREWDRIVER TYPE UNIDIRECTIONAL



2530

PART NUMBER	PORT SIZE	PRICE
ZSVU602-M5	M5	£14.72
ZSVU604-18	1/8"	£10.58
ZSVU606-14	1/4"	£13.88
ZSVU610-12*	1/2"	£58.04

VALVE MOUNT MANUAL TYPE UNIDIRECTIONAL



2530

PART NUMBER	PORT SIZE	PRICE
ZMVU702-M5	M5	£16.25
ZMVU704-18	1/8"	£11.70
ZMVU706-14	1/4"	£13.16
ZMVU710-12*	1/2"	£58.04

EXHAUST RESTRICTOR WITH SILENCER



2530

PART NUMBER	PORT SIZE	PRICE
ZRSW18	1/8"	£8.31
ZRSW14	1/4"	£8.92
ZRSW12	1/2"	£24.12

SILENCING BUSH



2530

PART NUMBER	PORT SIZE	PRICE
Z2905-18	1/8"	£2.19
Z2905-14	1/4"	£3.24
Z2905-38	3/8"	£5.49

You may also need ...

Banjo body

... see page 405, section 7



SPECIFICATIONS

Operating pressure	0.8 to 16 bar (232 psi)
Operating temperature	-10°C to +60°C (+14°F to +140°F)
Body & collet materials	Nickel plated brass
Threads	BSPP with PTFE sealing ring
Tube to connect	Nylon 6, 11, 12, polyurethane and polyethylene
Media	Compressed air

STUD COUPLING with sealing ring BSPP MALE



2520

PART NUMBER	TUBE OD	THREAD	PRICE
ZS6510041/8	4 mm	1/8" BSPP	£1.63
ZS6510041/4	4 mm	1/4" BSPP	£1.89
ZS6510051/8	5 mm	1/8" BSPP	£1.63
ZS6510051/4	5 mm	1/4" BSPP	£1.89
ZS6510061/8	6 mm	1/8" BSPP	£1.63
ZS6510061/4	6 mm	1/4" BSPP	£1.89
ZS6510081/8	8 mm	1/8" BSPP	£2.07
ZS6510081/4	8 mm	1/4" BSPP	£2.11
ZS6510083/8	8 mm	3/8" BSPP	£2.54
ZS6510101/4	10 mm	1/4" BSPP	£3.16
ZS6510103/8	10 mm	3/8" BSPP	£3.16
ZS6510101/2	10 mm	1/2" BSPP	£4.29
ZS6510121/4	12 mm	1/4" BSPP	£3.79
ZS6510123/8	12 mm	3/8" BSPP	£3.79
ZS6510121/2	12 mm	1/2" BSPP	£4.79
ZS6510143/8	14 mm	3/8" BSPP	£5.56
ZS6510141/2	14 mm	1/2" BSPP	£5.56

STUD COUPLING with O-ring BSPP MALE



2520

PART NUMBER	TUBE OD	THREAD	PRICE
Z651204M5	4 mm	M5	£1.89
Z651204M6	4 mm	M6	£1.89
Z6512041/8	4 mm	1/8" BSPP	£1.79
Z6512041/4	4 mm	1/4" BSPP	£2.15
Z651205M5	5 mm	M5	£1.89
Z651206M5	6 mm	M5	£1.89
Z6512061/8	6 mm	1/8" BSPP	£1.79
Z6512061/4	6 mm	1/4" BSPP	£2.15
Z6512081/8	8 mm	1/8" BSPP	£2.15
Z6512081/4	8 mm	1/4" BSPP	£2.30
Z6512083/8	8 mm	3/8" BSPP	£2.67
Z6512101/4	10 mm	1/4" BSPP	£3.16
Z6512103/8	10 mm	3/8" BSPP	£3.16
Z6512121/4	12 mm	1/4" BSPP	£3.79
Z6512123/8	12 mm	3/8" BSPP	£3.79

STUD COUPLING BSPP FEMALE



2520

PART NUMBER	TUBE OD	THREAD	PRICE
Z646304M5	4 mm	M5	£2.64
Z6463041/8	4 mm	1/8" BSPP	£2.45
Z6463051/8	5 mm	1/8" BSPP	£2.45
Z6463061/8	6 mm	1/8" BSPP	£2.45
Z6463061/4	6 mm	1/4" BSPP	£2.79
Z6463081/8	8 mm	1/8" BSPP	£2.79
Z6463081/4	8 mm	1/4" BSPP	£2.94
Z6463101/4	10 mm	1/4" BSPP	£3.79

EQUAL STRAIGHT CONNECTOR



2520

PART NUMBER	TUBE OD	PRICE
Z658004	4 mm	£3.28
Z658005	5 mm	£3.28
Z658006	6 mm	£3.28
Z658008	8 mm	£3.79
Z658010	10 mm	£5.22
Z658012	12 mm	£5.59
Z658014	14 mm	£9.66

BULKHEAD CONNECTOR



2520

PART NUMBER	TUBE OD	PRICE
Z659004	4 mm	£4.42
Z659005	5 mm	£4.42
Z659006	6 mm	£4.42
Z659008	8 mm	£4.88
Z659010	10 mm	£7.27
Z659012	12 mm	£8.28
Z659014	14 mm	£11.83

EQUAL ELBOW



2520

PART NUMBER	TUBE OD	PRICE
Z655004	4 mm	£3.22
Z655005	5 mm	£3.71
Z655006	6 mm	£3.52
Z655008	8 mm	£3.79
Z655010	10 mm	£5.70
Z655012	12 mm	£7.56
Z655014	14 mm	£9.81

STUD SWIVEL ELBOW
with sealing ring
BSPP MALE



2520

PART NUMBER	TUBE OD	THREAD	PRICE
ZS6520041/8	4 mm	1/8" BSPP	£3.31
ZS6520041/4	4 mm	1/4" BSPP	£3.55
ZS6520051/8	5 mm	1/8" BSPP	£3.31
ZS6520051/4	5 mm	1/4" BSPP	£4.13
ZS6520061/8	6 mm	1/8" BSPP	£3.31
ZS6520061/4	6 mm	1/4" BSPP	£3.71
ZS6520081/8	8 mm	1/8" BSPP	£3.83
ZS6520081/4	8 mm	1/4" BSPP	£4.13
ZS6520083/8	8 mm	3/8" BSPP	£5.05
ZS6520101/4	10 mm	1/4" BSPP	£5.85
ZS6520103/8	10 mm	3/8" BSPP	£6.12
ZS6520101/2	10 mm	1/2" BSPP	£7.56
ZS6520121/4	12 mm	1/4" BSPP	£6.70
ZS6520123/8	12 mm	3/8" BSPP	£7.17
ZS6520121/2	12 mm	1/2" BSPP	£8.63
ZS6520143/8	14 mm	3/8" BSPP	£9.81
ZS6520141/2	14 mm	1/2" BSPP	£9.94

STUD SWIVEL ELBOW
with O-ring
BSPP MALE



2520

PART NUMBER	TUBE OD	THREAD	PRICE
Z652204M5	4 mm	M5	£3.71
Z6522041/8	4 mm	1/8" BSPP	£3.45
Z6522041/4	4 mm	1/4" BSPP	£3.86
Z652205M5	5 mm	M5	£3.71
Z652206M5	6 mm	M5	£3.71
Z6522061/8	6 mm	1/8" BSPP	£3.45
Z6522061/4	6 mm	1/4" BSPP	£3.86
Z6522081/8	8 mm	1/8" BSPP	£4.05
Z6522081/4	8 mm	1/4" BSPP	£4.17
Z6522083/8	8 mm	3/8" BSPP	£5.05
Z6522101/4	10 mm	1/4" BSPP	£5.59
Z6522103/8	10 mm	3/8" BSPP	£6.38
Z6522121/4	12 mm	1/4" BSPP	£7.17
Z6522123/8	12 mm	3/8" BSPP	£7.17

SWIVEL BRANCH TEE
with sealing ring
BSPP MALE



2520

PART NUMBER	TUBE OD	THREAD	PRICE
ZS6430041/8	4 mm	1/8" BSPP	£4.83
ZS6430051/8	5 mm	1/8" BSPP	£4.83
ZS6430051/4	5 mm	1/4" BSPP	£5.19
ZS6430061/8	6 mm	1/8" BSPP	£4.83
ZS6430061/4	6 mm	1/4" BSPP	£5.19
ZS6430081/8	8 mm	1/8" BSPP	£5.91
ZS6430081/4	8 mm	1/4" BSPP	£6.06
ZS6430083/8	8 mm	3/8" BSPP	£6.78
ZS6430101/4	10 mm	1/4" BSPP	£8.57
ZS6430103/8	10 mm	3/8" BSPP	£9.17
ZS6430121/4	12 mm	1/4" BSPP	£9.42
ZS6430123/8	12 mm	3/8" BSPP	£9.94
ZS6430121/2	12 mm	1/2" BSPP	£11.44
ZS6430141/2	14 mm	1/2" BSPP	£13.97

SWIVEL BRANCH TEE
with O-ring
BSPP MALE



2520

PART NUMBER	TUBE OD	THREAD	PRICE
Z643204M5	4 mm	M5	£4.59
Z6432041/8	4 mm	1/8" BSPP	£4.88
Z643205M5	5 mm	M5	£4.59
Z6432061/8	6 mm	1/8" BSPP	£4.59
Z6432061/4	6 mm	1/4" BSPP	£5.27
Z6432081/8	8 mm	1/8" BSPP	£5.97
Z6432081/4	8 mm	1/4" BSPP	£6.15
Z6432083/8	8 mm	3/8" BSPP	£6.95
Z6432101/4	10 mm	1/4" BSPP	£8.82
Z6432103/8	10 mm	3/8" BSPP	£9.42
Z6432121/4	12 mm	1/4" BSPP	£9.94
Z6432123/8	12 mm	3/8" BSPP	£10.54

SWIVEL RUN TEE
with sealing ring
BSPP MALE



2520

PART NUMBER	TUBE OD	THREAD	PRICE
ZS6440041/8	4 mm	1/8" BSPP	£4.83
ZS6440051/8	5 mm	1/8" BSPP	£4.83
ZS6440061/8	6 mm	1/8" BSPP	£4.83
ZS6440061/4	6 mm	1/4" BSPP	£5.19
ZS6440081/8	8 mm	1/8" BSPP	£5.91
ZS6440081/4	8 mm	1/4" BSPP	£6.06
ZS6440083/8	8 mm	3/8" BSPP	£6.78
ZS6440101/4	10 mm	1/4" BSPP	£8.57
ZS6440103/8	10 mm	3/8" BSPP	£9.17
ZS6440123/8	12 mm	3/8" BSPP	£9.94
ZS6440141/2	14 mm	1/2" BSPP	£14.14

SWIVEL RUN TEE
with O-ring
BSPP MALE



2520

PART NUMBER	TUBE OD	THREAD	PRICE
Z644204M5	4 mm	M5	£4.59
Z6442041/8	4 mm	1/8" BSPP	£4.88
Z644205M5	5 mm	M5	£4.59
Z6442061/8	6 mm	1/8" BSPP	£4.59
Z6442061/4	6 mm	1/4" BSPP	£5.27
Z6442081/8	8 mm	1/8" BSPP	£6.15
Z6442081/4	8 mm	1/4" BSPP	£6.15
Z6442083/8	8 mm	3/8" BSPP	£6.78
Z6442101/4	10 mm	1/4" BSPP	£8.82
Z6442103/8	10 mm	3/8" BSPP	£9.42
Z6442121/4	12 mm	1/4" BSPP	£9.94
Z6442123/8	12 mm	3/8" BSPP	£10.54



EQUAL TEE

2520

PART NUMBER	TUBE OD	PRICE
Z654004	4 mm	£4.17
Z654005	5 mm	£4.17
Z654006	6 mm	£4.51
Z654008	8 mm	£5.19
Z654010	10 mm	£7.98
Z654012	12 mm	£9.94
Z654014	14 mm	£13.42



EQUAL CROSS

2520

PART NUMBER	TUBE OD	PRICE
Z66004	4 mm	£8.51
Z66005	5 mm	£8.51
Z66008	8 mm	£9.49
Z66010	10 mm	£13.27
Z66012	12 mm	£19.51



SWIVEL 'Y' CONNECTOR

2520

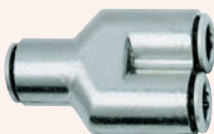
PART NUMBER	TUBE OD	THREAD	PRICE
Z645104M5	4 mm	M5	£6.12
Z645106M5	6 mm	M5	£6.32



**SWIVEL 'Y' CONNECTOR
BSPP**

2520

PART NUMBER	TUBE OD	THREAD	PRICE
ZS6450041/8	4 mm	1/8" BSPP	£5.97
ZS6450061/8	6 mm	1/8" BSPP	£6.15
ZS6450081/8	8 mm	1/8" BSPP	£7.35
ZS6450081/4	8 mm	1/4" BSPP	£7.35



EQUAL 'Y' CONNECTOR

2520

PART NUMBER	TUBE OD	PRICE
Z65604	4 mm	£6.71
Z65606	6 mm	£6.71
Z65608	8 mm	£8.07
Z656010	10 mm	£14.12



PLASTIC BLANKING PLUG

2520

PART NUMBER	TUBE OD	PRICE
Z69004	4 mm	£0.86
Z69005	5 mm	£0.86
Z69006	6 mm	£0.86
Z69008	8 mm	£0.94
Z690010	10 mm	£1.20
Z690012	12 mm	£1.54
Z690014	14 mm	£2.16



TUBE BLANKING CAP

2520

PART NUMBER	TUBE OD	PRICE
Z67504	4 mm	£1.69
Z67506	6 mm	£1.69
Z67508	8 mm	£1.92
Z675010	10 mm	£2.23
Z675012	12 mm	£2.61



**STEM ADAPTOR
BSPP**

2520

PART NUMBER	TUBE OD	THREAD	PRICE
Z681104M5	4 mm	M5	£1.01
Z6811041/8	4 mm	1/8" BSPP	£0.97
Z6811051/8	5 mm	1/8" BSPP	£0.97
Z6811051/4	5 mm	1/4" BSPP	£1.18
Z6811061/8	6 mm	1/8" BSPP	£0.94
Z6811061/4	6 mm	1/4" BSPP	£1.18
Z6811081/8	8 mm	1/8" BSPP	£0.97
Z6811081/4	8 mm	1/4" BSPP	£1.18
Z6811101/4	10 mm	1/4" BSPP	£1.54
Z6811103/8	10 mm	3/8" BSPP	£2.06
Z6811123/8	12 mm	3/8" BSPP	£2.06
Z6811141/2	14 mm	1/2" BSPP	£3.31



PRESS FIT CARTRIDGE

2520

PART NUMBER	TUBE OD	PRICE
Z67004	4 mm	£1.69
Z67005	5 mm	£1.69
Z67006	6 mm	£1.69
Z67008	8 mm	£2.07
Z670010	10 mm	£2.60



2520

TUBE STEM INCREASER

PART NUMBER	TUBE OD	STEM OD	PRICE
Z685064	6 mm	4 mm	£2.10
Z685086	8 mm	6 mm	£2.25



2520

STRAIGHT STEM

PART NUMBER	TUBE OD	PRICE
Z695004	4 mm	£1.06
Z695006	6 mm	£1.20
Z695008	8 mm	£1.25
Z695010	10 mm	£1.72
Z695012	12 mm	£2.13
Z695014	14 mm	£2.75



2520

STEM REDUCER

PART NUMBER	TUBE OD	STEM OD	PRICE
Z680004-05	4 mm	5 mm	£2.11
Z680004-06	4 mm	6 mm	£2.11
Z680004-08	4 mm	8 mm	£2.15
Z680005-06	5 mm	6 mm	£2.11
Z680005-08	5 mm	8 mm	£2.15
Z680006-08	6 mm	8 mm	£2.25
Z680006-10	6 mm	10 mm	£2.67
Z680006-12	6 mm	12 mm	£2.92
Z680008-10	8 mm	10 mm	£3.16
Z680008-12	8 mm	12 mm	£3.16
Z680010-12	10 mm	12 mm	£3.24
Z680010-14	10 mm	14 mm	£3.83
Z680012-14	12 mm	14 mm	£4.29



2520

TUBE TO STEM ELBOW

PART NUMBER	TUBE OD	STEM OD	PRICE
Z655504-04	4 mm	4 mm	£5.01
Z655506-06	6 mm	6 mm	£5.01
Z655508-08	8 mm	8 mm	£5.29
Z65551010	10 mm	10 mm	£8.63



2520

DUST COVER

PART NUMBER	TUBE OD	PRICE
Z67084	4 mm	£0.42
Z67085	5 mm	£0.42
Z67086	6 mm	£0.42
Z67088	8 mm	£0.42
Z670810	10 mm	£0.42
Z670812	12 mm	£0.49
Z670814	14 mm	£0.49



2520

SINGLE BANJO CONNECTOR FOR USE WITH BANJO BOLTS

PART NUMBER	TUBE OD	BOLT THREAD	PRICE
Z661004M5	4 mm	M5	£2.54
Z661004M6	4 mm	M6	£2.54
Z6610041/8	4 mm	1/8"	£3.15
Z661005M5	5 mm	M5	£2.54
Z661005M6	5 mm	M6	£2.54
Z661006M5	6 mm	M5	£2.54
Z661006M6	6 mm	M6	£2.54
Z6610061/8	6 mm	1/8"	£3.15
Z6610061/4	6 mm	1/4"	£3.52
Z6610081/8	8 mm	1/8"	£3.57
Z6610081/4	8 mm	1/4"	£3.73
Z6610101/4	10 mm	1/4"	£4.71
Z6610103/8	10 mm	3/8"	£5.22



2520

DOUBLE BANJO CONNECTOR FOR USE WITH BANJO BOLTS

PART NUMBER	TUBE OD	BOLT THREAD	PRICE
Z662004M5	4 mm	M5	£5.22
Z6620041/8	4 mm	1/8"	£5.41
Z6620061/8	6 mm	1/8"	£5.41
Z6620061/4	6 mm	1/4"	£5.89
Z6620081/8	8 mm	1/8"	£6.24
Z6620081/4	8 mm	1/4"	£6.71



2520

SINGLE BANJO CONNECTOR with O-ring

PART NUMBER	TUBE OD	THREAD	PRICE
Z662204M5	4 mm	M5	£6.76
Z6622041/8	4 mm	1/8" BSPP	£6.76
Z6622061/8	6 mm	1/8" BSPP	£6.76
Z6622061/4	6 mm	1/4" BSPP	£7.47
Z6622081/8	8 mm	1/8" BSPP	£7.09
Z6622081/4	8 mm	1/4" BSPP	£7.63
Z6622101/4	10 mm	1/4" BSPP	£8.35



2520

DOUBLE BANJO CONNECTOR with O-ring BSPP

PART NUMBER	TUBE OD	THREAD	PRICE
Z6632041/8	4 mm	1/8" BSPP	£9.62
Z6632061/8	6 mm	1/8" BSPP	£9.62
Z6632061/4	6 mm	1/4" BSPP	£10.51
Z6632081/8	8 mm	1/8" BSPP	£10.06
Z6632081/4	8 mm	1/4" BSPP	£10.74
Z6632101/4	10 mm	1/4" BSPP	£11.48

You may also need ...

Banjo bolts

... see page 401, section 7



SPECIFICATIONS

Operating pressure	0.8 to 16 bar (232 psi)
Operating temperature	-10°C to +60°C (14°F to 140°F)
Body & collet materials	Nickel plated brass
Threads	BSPP with NBR O-ring
Tube to connect	Nylon 6, 11, 12, polyurethane and polyethylene
Media	Compressed air

STUD COUPLING with O-ring PARALLEL MALE



2520

PART NUMBER	TUBE OD	THREAD	PRICE
Z651203M3	3 mm	M3	£4.13
Z651203M5	3 mm	M5	£3.60
Z65120418M	4 mm	1/8" BSPP	£1.79
Z651206M7	6 mm	M7	£2.12
Z65120618M	6 mm	1/8" BSPP	£1.79
Z65120818M	8 mm	1/8" BSPP	£2.15

SINGLE BANJO CONNECTOR PARALLEL



2520

PART NUMBER	TUBE OD	THREAD	PRICE
Z662103M3	3 mm	M3	£7.82
Z662103M5	3 mm	M5	£7.20

SWIVEL RUN TEE with O-ring PARALLEL MALE



2520

PART NUMBER	TUBE OD	THREAD	PRICE
Z644203M3	3 mm	M3	£8.28
Z644203M5	3 mm	M5	£7.58

EQUAL STRAIGHT CONNECTOR



2520

PART NUMBER	TUBE OD	PRICE
Z658003	3 mm	£6.63

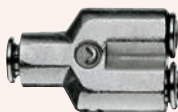
EQUAL ELBOW



2520

PART NUMBER	TUBE OD	PRICE
Z655003	3 mm	£5.34

'Y' CONNECTOR



2520

PART NUMBER	TUBE OD	PRICE
Z65603	3 mm	£9.99

PRESS FIT CARTRIDGE



2520

PART NUMBER	TUBE OD	PRICE
Z67003	3 mm	£2.87

STUD SWIVEL ELBOW with O-ring PARALLEL MALE



2520

PART NUMBER	TUBE OD	THREAD	PRICE
Z652203M3	3 mm	M3	£6.08
Z652203M5	3 mm	M5	£5.49

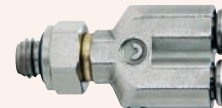
SWIVEL BRANCH TEE with O-ring PARALLEL MALE



2520

PART NUMBER	TUBE OD	THREAD	PRICE
Z643203M3	3 mm	M3	£8.28
Z643203M5	3 mm	M5	£7.58

SWIVEL 'Y' CONNECTOR PARALLEL



2520

PART NUMBER	TUBE OD	THREAD	PRICE
Z645203M3	3 mm	M3	£10.36
Z645203M5	3 mm	M5	£10.36

BULKHEAD CONNECTOR



2520

PART NUMBER	TUBE OD	PRICE
Z659003	3 mm	£8.28

EQUAL TEE



2520

PART NUMBER	TUBE OD	PRICE
Z654003	3 mm	£7.28

STEM ADAPTOR



2520

PART NUMBER	TUBE OD	STEM OD	PRICE
Z680003-04	3 mm	4 mm	£4.64

NYLON BLANKING PLUG



2520

PART NUMBER	TUBE	PRICE
Z69003	3 mm	£2.87

SPECIFICATIONS

Operating pressure	Maximum 25 bar (362 psi) depending on tubing
Operating temperature	Maximum 80°C
Materials	Nickel plated brass
Tube to connect	Nylon 6, 11, 12, polyethylene, braided PVC, polyurethane
Media	Compressed air and any fluids compatible with material specifications



2520

STUD COUPLING BSPT MALE

PART NUMBER	TUBE OD/ID	THREAD	PRICE
Z1510531/8	5/3 mm	1/8" BSPT	£1.42
Z1510641/8	6/4 mm	1/8" BSPT	£1.12
Z1510641/4	6/4 mm	1/4" BSPT	£1.37
Z1510643/8	6/4 mm	3/8" BSPT	£2.10
Z1510641/2	6/4 mm	1/2" BSPT	£3.25
Z1510861/8	8/6 mm	1/8" BSPT	£1.42
Z1510861/4	8/6 mm	1/4" BSPT	£1.53
Z1510863/8	8/6 mm	3/8" BSPT	£2.25
Z1510861/2	8/6 mm	1/2" BSPT	£3.31
Z1510101/8	10/8 mm	1/8" BSPT	£1.92
Z1510101/4	10/8 mm	1/4" BSPT	£1.74
Z1510103/8	10/8 mm	3/8" BSPT	£2.69
Z1510101/2	10/8 mm	1/2" BSPT	£3.70
Z1510123/8	12/10 mm	3/8" BSPT	£2.81
Z1510121/2	12/10 mm	1/2" BSPT	£3.99
Z1510151/2	15/12.5 mm	1/2" BSPT	£4.42



2520

STUD COUPLING BSPP FEMALE

PART NUMBER	TUBE OD/ID	THREAD	PRICE
Z1463531/8	5/3 mm	1/8" BSPP	£1.53
Z1463641/8	6/4 mm	1/8" BSPP	£1.53
Z1463641/4	6/4 mm	1/4" BSPP	£1.92
Z1463643/8	6/4 mm	3/8" BSPP	£3.21
Z1463861/8	8/6 mm	1/8" BSPP	£1.59
Z1463861/4	8/6 mm	1/4" BSPP	£2.02
Z1463863/8	8/6 mm	3/8" BSPP	£3.25
Z1463101/8	10/8 mm	1/8" BSPP	£2.14
Z1463101/4	10/8 mm	1/4" BSPP	£2.42
Z1463103/8	10/8 mm	3/8" BSPP	£3.84
Z1463101/2	10/8 mm	1/2" BSPP	£5.27
Z1463123/8	12/10 mm	3/8" BSPP	£4.82



2520

BULKHEAD CONNECTOR / REDUCER

PART NUMBER	TUBE OD/ID	TUBE OD/ID	PRICE
Z159053	5/3 mm	5/3 mm	£3.65
Z15906453	6/4 mm	5/3 mm	£3.94
Z159064	6/4 mm	6/4 mm	£3.25
Z15908664	8/6 mm	6/4 mm	£4.38
Z159086	8/6 mm	8/6 mm	£3.79
Z159010	10/8 mm	10/8 mm	£4.76
Z159012	12/10 mm	12/10 mm	£6.06



2520

STUD SWIVEL COUPLING BSPP MALE with sealing ring

PART NUMBER	TUBE OD/ID	THREAD	PRICE
Z1560641/8	6/4 mm	1/8" BSPP	£2.54
Z1560641/4	6/4 mm	1/4" BSPP	£2.91
Z1560861/8	8/6 mm	1/8" BSPP	£2.64
Z1560861/4	8/6 mm	1/4" BSPP	£2.94
Z1560101/4	10/8 mm	1/4" BSPP	£3.32
Z1560103/8	10/8 mm	3/8" BSPP	£4.09
Z1560123/8	12/10 mm	3/8" BSPP	£4.99



2520

STRAIGHT CONNECTOR / REDUCER

PART NUMBER	TUBE OD/ID	TUBE OD/ID	PRICE
Z158053	5/3 mm	5/3 mm	£2.69
Z15808664	8/6 mm	6/4 mm	£2.81
Z158086	8/6 mm	8/6 mm	£2.41
Z15801064	10/8 mm	6/4 mm	£3.76
Z158012	12/10 mm	12/10 mm	£4.76
Z158015	15/12.5 mm	15/12.5 mm	£8.84



2520

STUD ELBOW BSPT MALE

PART NUMBER	TUBE OD/ID	THREAD	PRICE
Z1500531/8	5/3 mm	1/8" BSPT	£1.69
Z1500641/8	6/4 mm	1/8" BSPT	£1.55
Z1500641/4	6/4 mm	1/4" BSPT	£1.78
Z1500643/8	6/4 mm	3/8" BSPT	£2.94
Z1500861/8	8/6 mm	1/8" BSPT	£1.78
Z1500861/4	8/6 mm	1/4" BSPT	£2.04
Z1500863/8	8/6 mm	3/8" BSPT	£2.94
Z1500861/2	8/6 mm	1/2" BSPT	£4.84
Z1500101/8	10/8 mm	1/8" BSPT	£2.81
Z1500101/4	10/8 mm	1/4" BSPT	£2.81
Z1500103/8	10/8 mm	3/8" BSPT	£3.48
Z1500101/2	10/8 mm	1/2" BSPT	£5.35
Z1500123/8	12/10 mm	3/8" BSPT	£4.47
Z1500121/2	12/10 mm	1/2" BSPT	£5.85
Z1500151/2	15/12.5 mm	1/2" BSPT	£6.31

STUD SWIVEL ELBOW with sealing ring BSPP MALE



2520

PART NUMBER	TUBE OD/ID	THREAD	PRICE
Z1541641/8	6/4 mm	1/8" BSPP	£2.94
Z1541641/4	6/4 mm	1/4" BSPP	£3.61
Z1541861/8	8/6 mm	1/8" BSPP	£3.31
Z1541861/4	8/6 mm	1/4" BSPP	£3.79
Z1541101/4	10/8 mm	1/4" BSPP	£4.82

STUD ELBOW BSPP FEMALE



2520

PART NUMBER	TUBE OD/ID	THREAD	PRICE
Z1493641/8	6/4 mm	1/8" BSPP	£2.13
Z1493641/4	6/4 mm	1/4" BSPP	£3.44
Z1493861/8	8/6 mm	1/8" BSPP	£2.30
Z1493861/4	8/6 mm	1/4" BSPP	£3.44
Z1493101/4	10/8 mm	1/4" BSPP	£3.84
Z1493123/8	12/10 mm	3/8" BSPP	£6.75

EQUAL ELBOW



2520

PART NUMBER	TUBE OD/ID	PRICE
Z155064	6/4 mm	£2.91
Z155086	8/6 mm	£2.94
Z155010	10/8 mm	£3.99
Z155012	12/10 mm	£5.85
Z155015	15/12.5 mm	£8.63

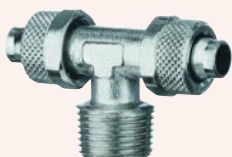
RUN TEE BSPT MALE



2520

PART NUMBER	TUBE OD/ID	THREAD	PRICE
Z1420531/8	5/3 mm	1/8" BSPT	£2.94
Z1420641/8	6/4 mm	1/8" BSPT	£2.57
Z1420641/4	6/4 mm	1/4" BSPT	£2.91
Z1420861/8	8/6 mm	1/8" BSPT	£2.91
Z1420861/4	8/6 mm	1/4" BSPT	£3.07
Z1420101/8	10/8 mm	1/8" BSPT	£4.60
Z1420101/4	10/8 mm	1/4" BSPT	£4.60

BRANCH TEE BSPT MALE



2520

PART NUMBER	TUBE OD/ID	THREAD	PRICE
Z1410531/8	5/3 mm	1/8" BSPT	£2.94
Z1410641/8	6/4 mm	1/8" BSPT	£2.57
Z1410641/4	6/4 mm	1/4" BSPT	£2.91
Z1410861/8	8/6 mm	1/8" BSPT	£2.91
Z1410861/4	8/6 mm	1/4" BSPT	£3.07
Z1410101/8	10/8 mm	1/8" BSPT	£4.60
Z1410101/2	10/8 mm	1/2" BSPT	£8.24
Z1410123/8	12/10 mm	3/8" BSPT	£7.38
Z1410121/2	12/10 mm	1/2" BSPT	£8.75
Z1410151/2	15/12.5 mm	1/2" BSPT	£10.06

SWIVEL BRANCH TEE with sealing ring BSPP MALE



2520

PART NUMBER	TUBE OD/ID	THREAD	PRICE
Z1431641/8	6/4 mm	1/8" BSPP	£3.83
Z1431641/4	6/4 mm	1/4" BSPP	£4.31
Z1431861/8	8/6 mm	1/8" BSPP	£4.29
Z1431861/4	8/6 mm	1/4" BSPP	£4.50
Z1431101/4	10/8 mm	1/4" BSPP	£5.76

TEE EQUAL AND REDUCING



2520

PART NUMBER	TUBE OD/ID (A)	TUBE OD/ID (B)	PRICE
Z154053	5/3 mm	5/3 mm	£3.11
Z154064	6/4 mm	6/4 mm	£3.07
Z154086/64	8/6 mm	6/4 mm	£3.61
Z154086	8/6 mm	8/6 mm	£3.31
Z15401064	10/8 mm	6/4 mm	£5.41
Z15401086	10/8 mm	8/6 mm	£5.41
Z154010	10/8 mm	10/8 mm	£4.79
Z154012	12/10 mm	12/10 mm	£8.35
Z154015	15/12.5 mm	15/12.5 mm	£12.36

EQUAL CROSS



2520

PART NUMBER	TUBE OD/ID	PRICE
Z160064	6/4 mm	£5.27
Z160086	8/6 mm	£6.32

RAPID FITTINGS FOR PLASTIC TUBE



STEM ADAPTOR

2520

PART NUMBER	TUBE OD/ID	STEM	PRICE
Z147064	6/4 mm	6 mm	£1.53
Z147086	8/6 mm	8 mm	£1.67



**SINGLE BANJO RING
FOR USE WITH BANJO BOLTS**

2520

PART NUMBER	TUBE OD/ID	BOLT THREAD	PRICE
Z161053M5	5/3 mm	M5	£1.61
Z161053M6	5/3 mm	M6	£1.61
Z1610531/8	5/3 mm	1/8"	£2.07
Z161064M5	6/4 mm	M5	£1.61
Z161064M6	6/4 mm	M6	£1.61
Z1610641/8	6/4 mm	1/8"	£1.92
Z1610641/4	6/4 mm	1/4"	£2.10
Z1610643/8	6/4 mm	3/8"	£3.31
Z1610861/8	8/6 mm	1/8"	£2.10
Z1610861/4	8/6 mm	1/4"	£2.23
Z1610863/8	8/6 mm	3/8"	£3.25
Z1610101/8	10/8 mm	1/8"	£2.69
Z1610101/4	10/8 mm	1/4"	£2.75
Z1610103/8	10/8 mm	3/8"	£3.99
Z1610101/2	10/8 mm	1/2"	£4.89
Z1610123/8	12/10 mm	3/8"	£4.60
Z1610121/2	12/10 mm	1/2"	£5.61
Z1610151/2	15/12.5 mm	1/2"	£6.31



NUT

2520

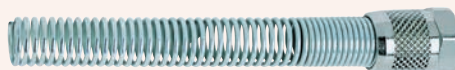
PART NUMBER	TUBE OD/ID	THREAD	PRICE
Z17035/3	5/3 mm	M7 x 0.75	£0.46
Z170364M8	6/4 mm	M8	£0.46
Z170364M10	6/4 mm	M10	£0.49
Z170386	8/6 mm	M12	£0.54
Z170310	10/8 mm	M14	£0.69
Z170312	12/10 mm	M16	£1.06



**DOUBLE BANJO RING
FOR USE WITH BANJO BOLTS**

2520

PART NUMBER	TUBE OD/ID	BOLT THREAD	PRICE
Z162064M5	6/4 mm	M5	£3.65
Z1620641/8	6/4 mm	1/8"	£3.94
Z1620641/4	6/4 mm	1/4"	£4.17
Z1620861/8	8/6 mm	1/8"	£4.06
Z1620861/4	8/6 mm	1/4"	£4.17



HOSE KINK PROTECTOR

2520

PART NUMBER	TUBE OD/ID	PRICE
Z1723-6/4	6/4 mm	£1.59
Z1723-8/6	8/6 mm	£1.92
Z1723-10/8	10/8 mm	£2.55
Z1723-12/10	12/10 mm	£3.24
Z172315	15/12.5 mm	£4.29

SUPER RAPID & RAPID BANJO BOLTS FOR PLASTIC TUBE

**BANJO BOLT
FOR RAPID
& SUPER RAPID FITTINGS**



2520

PART NUMBER	THREAD	PRICE
Z163101M5	M5	£1.50
Z1631011/8	1/8" BSPP	£1.50
Z1631011/4	1/4" BSPP	£1.79
Z1631013/8	3/8" BSPP	£2.54
Z1631011/2	1/2" BSPP	£4.38

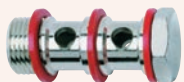
**EXTENDED BANJO BOLT
FOR RAPID FITTINGS**



2520

PART NUMBER	THREAD	PRICE
Z1635011/8	1/8" BSPP	£1.67
Z1635011/4	1/4" BSPP	£2.13
Z1635013/8	3/8" BSPP	£2.81
Z1635011/2	1/2" BSPP	£5.07

**DOUBLE BANJO BOLT
FOR RAPID
& SUPER RAPID FITTINGS**



2520

PART NUMBER	THREAD	PRICE
Z1631021/8	1/8" BSPP	£2.25
Z1631021/4	1/4" BSPP	£3.16
Z1631023/8	3/8" BSPP	£3.79

**EXTENDED
DOUBLE BANJO BOLT
FOR RAPID FITTINGS**



2520

PART NUMBER	THREAD	PRICE
Z1635021/8	1/8" BSPP	£3.21
Z1635021/4	1/4" BSPP	£3.94
Z1635023/8	3/8" BSPP	£4.88
Z1635021/2	1/2" BSPP	£8.48

**TRIPLE BANJO BOLT
FOR RAPID
& SUPER RAPID FITTINGS**



2520

PART NUMBER	THREAD	PRICE
Z1631031/8	1/8" BSPP	£3.21
Z1631031/4	1/4" BSPP	£4.01
Z1631033/8	3/8" BSPP	£5.54

DESCRIPTION

C-Truck fittings have been designed for use in the pneumatic braking system on commercial vehicles. They have been designed to allow quick tube assembly and disassembly without the need to remove the fitting. The fittings have a protective cover to keep humidity and dirt away from the collet. The insert gives the tube dimensional stability even when there are extreme changes in temperature.



2565

STUD COUPLING METRIC MALE

PART NUMBER	TUBE	THREAD	PRICE
Z95126-M10x1	6/4	M10 x 1	£2.48
Z95126-M12x1.5	6/4	M12 x 1.5	£2.41
Z95126-M14x1.5	6/4	M14 x 1.5	£2.48
Z9512 6-M16X1.5	6/4	M16 x 1.5	£2.47
Z9512 8-M10X1	8/6	M10 x 1	£2.86
Z95128-M12x1.5	8/6	M12 x 1.5	£2.86
Z95128-M14x1.5	8/6	M14 x 1.5	£2.86
Z9512 8-M16X1.5	8/6	M16 x 1.5	£2.86
Z95128-M22x1.5	8/6	M22 x 1.5	£3.97
Z9512 10-7 M12x1.5	10/7	M12 x 1.5	£4.45
Z9512 10-7 M16x1.5	10/7	M16 x 1.5	£4.36
Z9512 10-7 M22x1.5	10/7	M22 x 1.5	£4.88
Z951210-M12x1.5	10/8	M12 x 1.5	£3.84
Z951210-M16x1.5	10/8	M16 x 1.5	£3.78
Z9512 10-M18X1.5	10/8	M18 x 1.5	£4.34
Z951210-M22x1.5	10/8	M22 x 1.5	£4.24
Z9512 12-M12X1.5	12/9	M12 x 1.5	£3.72
Z9512 12-M14X1.5	12/9	M14 x 1.5	£3.72
Z951212-M16x1.5	12/9	M16 x 1.5	£3.72
Z951212-M22x1.5	12/9	M22 x 1.5	£3.99
Z9512 15-11 M16X1.5	15/11	M16 x 1.5	£6.18
Z9512 15-11 M22X1.5	15/11	M22 x 1.5	£6.08
Z9512 15-M16X1.5	15/12	M16 x 1.5	£5.40
Z951215-M22x1.5	15/12	M22 x 1.5	£6.08
Z9512 16-12 M16X1.5	16/12	M16 x 1.5	£7.67
Z9512 16-12 M22X1.5	16/12	M22 x 1.5	£7.67
Z951216-M22x1.5	16/13	M22 x 1.5	£6.67
Z951218-M22x1.5	18/14	M22 x 1.5	£7.32



2565

ELBOW METRIC MALE

PART NUMBER	TUBE	THREAD	PRICE
Z95026-M10x1	6/4	M10 x 1	£3.73
Z95026-M12x1.5	6/4	M12 x 1.5	£3.84
Z95026-M16x1.5	6/4	M16 x 1.5	£4.26
Z95028-M10x1	8/6	M10 x 1	£4.23
Z95028-M12x1.5	8/6	M12 x 1.5	£4.23
Z95028-M14x1.5	8/6	M14 x 1.5	£4.33
Z95028-M16x1.5	8/6	M16 x 1.5	£4.33
Z95028-M22x1.5	8/6	M22 x 1.5	£5.80
Z9502 10-7 M12X1.5	10/7	M12 x 1.5	£6.42
Z9502 10-7 M16X1.5	10/7	M16 x 1.5	£6.42
Z9502 10-7 M22X1.5	10/7	M22 x 1.5	£7.33
Z950210-M12x1.5	10/8	M12 x 1.5	£5.59
Z950210-M16x1.5	10/8	M16 x 1.5	£5.59
Z950210-M22x1.5	10/8	M22 x 1.5	£6.39
Z950212-M12x1.5	12/9	M12 x 1.5	£5.19
Z950212-M16x1.5	12/9	M16 x 1.5	£5.17
Z950212-M22x1.5	12/9	M22 x 1.5	£6.09
Z9502 15-11 M16X1.5	15/11	M16 x 1.5	£8.52
Z9502 15-11 M22X1.5	15/11	M22 x 1.5	£8.97
Z950215-M16x1.5	15/12	M16 x 1.5	£7.40
Z950215-M22x1.5	15/12	M22 x 1.5	£7.79
Z9502 16-12 M16X1.5	16/12	M16 x 1.5	£11.52
Z9502 16-12 M22X1.5	16/12	M22 x 1.5	£11.52
Z950216-M22x1.5	16/13	M22 x 1.5	£10.04
Z950218-M22x1.5	18/14	M22 x 1.5	£10.59

SPECIFICATIONS

Working pressure	0 to 16 bar
Maximum pressure	According to the polyamide tube specifications
Tube	Polyamide: 4/2, 6/4, 8/6, 10/8, 12/9, 15/12, 16/13 and 18/14
Fluid	Compressed air
Temperature	-50°C to +100°C

MATERIALS

Body and collet	Brass
Locking nut	Zinc plated steel
Insert	Technopolymer with PTFE sealing on thread
O-ring	NBR
Cap	NBR



2565

STRAIGHT CONNECTOR MALE

PART NUMBER	TUBE	THREAD	PRICE
Z9510 06-02	6/4	1/8" NPTF	£2.20
Z9510 05-02	8/6	1/8" NPTF	£2.86



2565

STRAIGHT CONNECTOR METRIC FEMALE

PART NUMBER	TUBE	THREAD	PRICE
Z9463 6-M10x1	6/4	M10 x 1	£2.76
Z9463 6-M16x1.5	6/4	M16 x 1.5	£3.72
Z9463 8-M10x1	8/6	M10 x 1	£3.36



2565

ELBOW MALE

PART NUMBER	TUBE	THREAD	PRICE
Z9500 6-02	6/4	1/8" NPTF	£2.79
Z9500 05-02	8/6	1/8" NPTF	£3.18



2565

BRANCH TEE METRIC MALE

PART NUMBER	TUBE	THREAD	PRICE
Z94126-M10x1	6/4	M10 x 1	£6.11
Z94126-M12x1.5	6/4	M12 x 1.5	£6.52
Z94126-M16x1.5	6/4	M16 x 1.5	£6.71
Z94128-M12x1.5	8/6	M12 x 1.5	£6.71
Z94128-M16x1.5	8/6	M16 x 1.5	£6.71
Z94128-M22x1.5	8/6	M22 x 1.5	£9.00
Z9412 10-7 M12X1.5	10/7	M12 x 1.5	£10.52
Z9412 10-7 M16X1.5	10/7	M16 x 1.5	£10.52
Z9412 10-7 M22X1.5	10/7	M22 x 1.5	£11.42
Z941210-M16x1.5	10/8	M16 x 1.5	£9.15
Z941210-M22x1.5	10/8	M22 x 1.5	£9.91
Z941212-M12x1.5	12/9	M12 x 1.5	£8.30
Z941212-M16x1.5	12/9	M16 x 1.5	£8.57
Z941212-M22x1.5	12/9	M22 x 1.5	£9.15
Z9412 15-11 M16X1.5	15/11	M16 x 1.5	£13.91
Z9412 15-11 M22X1.5	15/11	M22 x 1.5	£14.62
Z941215-M16x1.5	15/12	M16 x 1.5	£12.07
Z941215-M22x1.5	15/12	M22 x 1.5	£12.72



2565

STUD COUPLING METRIC MALE

PART NUMBER	TUBE	THREAD	PRICE
ZD65124-M10x1	4/2	M10 x 1	£2.20



**BRANCH TEE
MALE**

2565

PART NUMBER	TUBE	THREAD	PRICE
Z9410 6-02	6/4	1/8" NPTF	£5.10
Z9410 05-02	8/6	1/8" NPTF	£5.70



**RUN TEE
METRIC MALE**

2565

PART NUMBER	TUBE	THREAD	PRICE
Z94226-M10x1	6/4	M10 x 1	£6.11
Z94226-M12x1.5	6/4	M12 x 1.5	£6.71
Z94226-M16x1.5	6/4	M16 x 1.5	£6.71
Z94228-M12x1.5	8/6	M12 x 1.5	£6.71
Z94228-M16x1.5	8/6	M16 x 1.5	£6.71
Z94228-M22x1.5	8/6	M22 x 1.5	£9.00
Z942210-M16x1.5	10/8	M16 x 1.5	£9.15
Z942210-M22x1.5	10/8	M22 x 1.5	£9.91
Z942212-M12x1.5	12/9	M12 x 1.5	£8.57
Z942212-M16x1.5	12/9	M16 x 1.5	£8.57
Z942212-M22x1.5	12/9	M22 x 1.5	£9.44
Z942215-M16x1.5	15/12	M16 x 1.5	£12.72
Z942215-M22x1.5	15/12	M22 x 1.5	£12.72



**RUN TEE
MALE**

2565

PART NUMBER	TUBE	THREAD	PRICE
Z9420 6-02	6/4	1/8" NPTF	£5.10
Z9420 05-02	8/6	1/8" NPTF	£5.70



**STRAIGHT CONNECTOR
TUBE TO TUBE**

2565

PART NUMBER	TUBE	PRICE
Z9580 6	6/4	£3.83
Z9580 8	8/6	£4.01
Z9580 10-7	10/7	£6.32
Z9580 10	10/8	£5.49
Z9580 12	12/9	£4.98
Z9580 15-11	15/11	£11.03
Z9580 16-12	16/12	£12.00
Z9580 18-14	18/14	£25.95



**STRAIGHT CONNECTOR
MALE**

2565

PART NUMBER	TUBE	THREAD	PRICE
Z9590 8-M18x1.5	8/6	M18 x 1.5	£6.67
Z9590 12-M18x1.5	12/9	M18 x 1.5	£6.35



**STRAIGHT CONNECTOR
MALE**

2565

PART NUMBER	TUBE (A)	TUBE (B)	THREAD	PRICE
Z9592 8-8-M18x1	8/6	8/6	M18 x 1	£7.49
Z9592 12-8-M18x1	12/9	8/6	M18 x 1	£8.04



**TEE
TUBE TO TUBE**

2565

PART NUMBER	TUBE	PRICE
Z9540 6	6/4	£6.44
Z9540 8	8/6	£7.23
Z9540 10-7	10/7	£11.53
Z9540 10	10/8	£10.05
Z9540 12	12/9	£9.10
Z9540 15-11	15/11	£16.61



**BULKHEAD CONNECTOR
MALE**

2565

PART NUMBER	THREAD (A)	THREAD (B)	PRICE
ZD2512 M22-M16	M22 x 1.5	M16 x 1.5	£5.99
ZD2502 M22-M22	M22 x 1.5	M22 x 1.5	£4.71



**STEM ADAPTOR
MALE**

2565

PART NUMBER	TUBE ID	THREAD	PRICE
ZD2602 12-M16	12.5 mm	M16 x 1.5	£1.56
ZD2602 12-M22	12.5 mm	M22 x 1.5	£2.48



**BLANKING PLUG
MALE**

2565

PART NUMBER	THREAD	PRICE
ZD2612 M12	M12 x 1.5	£0.86
ZD2612 M16	M16 x 1.5	£0.97
ZD2612 M22	M22 x 1.5	£1.80



**ELBOW
MALE / FEMALE**

2565

PART NUMBER	MALE THREAD	FEMALE THREAD	PRICE
ZD2022 M16M16	M16 x 1.5	M16 x 1.5	£3.83
ZD2022 M16M22	M22 x 1.5	M16 x 1.5	£4.57
ZD2022 M22M22	M22 x 1.5	M22 x 1.5	£7.25



BRANCH TEE
FEMALE / MALE

2565

PART NUMBER	FEMALE THREAD	MALE THREAD	PRICE
ZD2062 M16M12	M16 x 1.5	M12 x 1.5	£5.63
ZD2062 M16M16	M16 x 1.5	M16 x 1.5	£6.92
ZD2062 M16M22	M16 x 1.5	M22 x 1.5	£6.30
ZD2062 M22M22	M22 x 1.5	M22 x 1.5	£7.51



BLEED POINT
MALE

2565

PART NUMBER	THREAD (A)	PRICE
ZVDC M22x1.5	M22 x 1.5	£5.57



RUN TEE
FEMALE / MALE

2565

PART NUMBER	FEMALE THREAD	MALE THREAD	PRICE
ZD2072 M16M12	M16 x 1.5	M12 x 1.5	£5.52
ZD2072 M16M16	M16 x 1.5	M16 x 1.5	£5.66
ZD2072 M16M22	M16 x 1.5	M22 x 1.5	£6.60
ZD2072 M22M22	M22 x 1.5	M22 x 1.5	£7.51



DISCONNECTION TOOL

2565

PART NUMBER	TUBE OD	PRICE
ZDRK 6	6 mm	£1.30
ZDRK 8	8 mm	£1.30
ZDRK 10	10 mm	£1.30
ZDRK 12	12 mm	£1.30
ZDRK 15	15 mm	£1.30
ZDRK 16	16 mm	£1.30
ZDRK 18	18 mm	£1.30



TEE
FEMALE

2565

PART NUMBER	THREAD	PRICE
ZS2003 M22	M22 x 1.5	£5.88



TUBE CUTTERS

9140

PART NUMBER	FOR USE WITH	PRICE
ZPNZ12	Tube up to 12 mm	£27.83
ZPNZ25	Tube up to 25 mm	£30.34



TEST POINT
MALE

2565

PART NUMBER	THREAD (A)	THREAD (B)	PRICE
ZVPC M16M16	M16 x 1.5	M16 x 1.5	£5.57
ZVPC M22M16	M22 x 1.5	M16 x 1.5	£5.57

You may also need ...

Tubing, hose and ducting

- PVC tubing & hose
- Nylon tubing
- Nylon recoils
- Polyurethane tube
- Polyurethane recoils



... on pages 496 – 567, section 10



MALE / FEMALE FITTINGS
D2077 Model

2565

PART NUMBER	MALE THREAD	FEMALE THREAD	PRICE
ZD2077 M16M16	M16 x 1.5	M16 x 1.5	£8.61
ZD2077 M16M22	M16 x 1.5	M22 x 1.5	£9.05



Y CONNECTOR
9450 Model

2565

PART NUMBER	TUBE OD	THREAD	PRICE
Z94508-M16x1-5	8/6 mm	M16 x 1.5	£8.66
Z945012-M16x1-5	12/9 mm	M16 x 1.5	£12.72
Z945012-M22x1-5	12/9 mm	M22 x 1.5	£12.87



EQUAL CROSS
D2032 Model

2565

PART NUMBER	THREAD	PRICE
ZD2032 M16M16	M16 x 1.5	£9.00



EQUAL FEMALE TEE
D2003...S01 Model

2565

PART NUMBER	THREAD	PRICE
ZD2003M16x1-5-S01	M16 x 1.5	£6.64



ELBOW
9402 Model

2565

PART NUMBER	TUBE OD	THREAD	PRICE
Z940212-M16x1-5	12 mm	M16 x 1.5	£9.64
Z940212-M22x1-5	12 mm	M22 x 1.5	£9.83

MALE / FEMALE INFLATION VALVE
V604 Model

2565

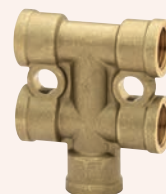
PART NUMBER	MALE	FEMALE	PRICE
ZV604M22x1-5-S01	M16 x 1.5	M22 x 1.5	£25.49



TUBE TO TUBE ELBOW

2565

PART NUMBER	TUBE OD	TUBE ID	PRICE
Z95506	6 mm	4 mm	£4.37
Z95508	8 mm	6 mm	£4.61
Z955010/7	10 mm	7 mm	£8.09
Z955010	10 mm	8 mm	£7.49
Z955012	12 mm	9 mm	£6.74



FEMALE MANIFOLD

2565

PART NUMBER	TUBE OD	THREAD	PRICE
ZD3043 M16M16	21 mm	M16 x 1.5	£11.10